



# Energy Storage Container 500kW More Efficient





## Overview

---

The 500KW Energy Storage Container System is a reliable and efficient solution for industrial and commercial energy management. It provides stable power supply, enhances grid stability, and supports renewable energy integration.

The 500KW Energy Storage Container System is a reliable and efficient solution for industrial and commercial energy management. It provides stable power supply, enhances grid stability, and supports renewable energy integration.

The 500KW Energy Storage Container System is a reliable and efficient solution for industrial and commercial energy management. It provides stable power supply, enhances grid stability, and supports renewable energy integration. Designed for durability and scalability, it optimizes energy use while.

The series of energy-type energy storage products adopts a lithium iron phosphate chemistry. It has high energy density and a long cycle life. The system design is highly integrated. The box structure is compact and the space utilization is high. It is easy to install using the rack with a flexible.

The Bluesun 40-foot BESS Container is a powerful energy storage solution featuring battery status monitoring, event logging, dynamic balancing, and advanced protection systems. It also includes automatic fire detection and alarm systems, ensuring safe and efficient energy management. The BESS.

Adding Containerized Battery Energy Storage System (BESS) to solar, wind, EV charger, and other renewable energy applications can reduce energy costs, minimize carbon footprint, and increase energy efficiency. Get ahead of the energy game with SCU! 50Kwh-2Mwh What is energy storage container?

SCU.

MEGATRON 300 & 500kW Battery Energy Storage Systems are AC Coupled BESS systems offered in both the 10 and 20' containers. Designed with either on-grid (grid following) or hybrid (grid forming) PCS units, each BESS unit is capable of AC coupling to new or existing PV systems making them an ideal.

1MW/2MWh Energy Storage Container is a turnkey solution integrating 1MW bi-



directional PCS and 2MWh LiFePO<sub>4</sub> battery systems in a standardized shipping container, designed for utility-scale and C&I applications. High-Efficiency Conversion - 1MW PCS achieves 98.6% peak efficiency with grid-forming.



## Energy Storage Container 500kW More Efficient



### [BESS Energy Storage Container System 500kW 1MW 1MWh 2MWh](#)

1MW/2MWh Energy Storage Container is a turnkey solution integrating 1MW bi-directional PCS and 2MWh LiFePO4 battery systems in a standardized shipping container, designed for utility ...

[Request Quote](#)

### [1.075MWh Containerized BESS , 500kW Industrial Energy ...](#)

With a rated energy capacity of 1.075MWh and 500kW output power, it enables peak shaving, reduces transformer costs, and delivers a 98.7% conversion efficiency for maximized ROI.

[Request Quote](#)



### [Energy storage container, BESS container](#)

Adding Containerized Battery Energy Storage System (BESS) to solar, wind, EV charger, and other renewable energy applications can reduce energy costs, minimize carbon footprint, and ...

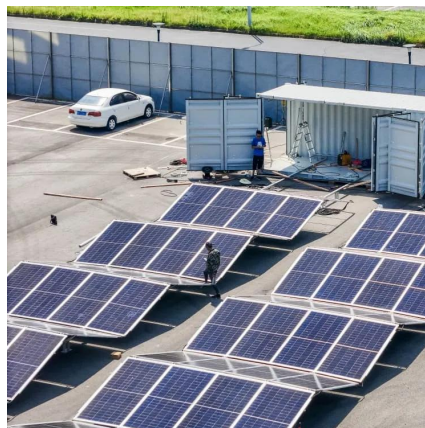
[Request Quote](#)

### [500kW/1075kWh Integrated Energy Storage System ...](#)

ing in lower operation and maintenance costs High Integration High Integration: The system is productized, integrating energy storage batteries, PCS (Power Conversion System), power ...



[Request Quote](#)



### [500KW Energy Storage Container System](#)

The 500KW Energy Storage Container System is a reliable and efficient solution for industrial and commercial energy management. It provides stable power supply, enhances grid stability, and ...

[Request Quote](#)



### [BESS Container 500KW 2MWH 40FT Energy Storage System ...](#)

The IP54-rated enclosure ensures dependable operation even in harsh environments. Consequently, with its robust features and exceptional scalability, the BESS Container 500kW ...

[Request Quote](#)



### **500kW Battery Energy Storage System**

MEGATRONS 500kW Battery Energy Storage Solution is the ideal fit for commercial applications. Utilizing Tier 1 LFP battery cells, each commercial BESS is designed for a install friendly plug ...

[Request Quote](#)



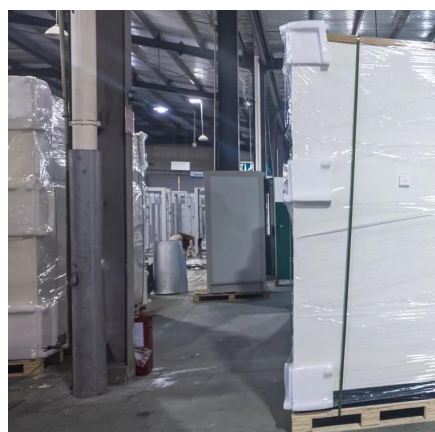
### **1.075MWh Containerized BESS ,**



## 500kW Industrial Energy Storage

With a rated energy capacity of 1.075MWh and 500kW output power, it enables peak shaving, reduces transformer costs, and delivers a 98.7% conversion efficiency for maximized ROI.

[Request Quote](#)



## 500KWh Container Lithium ESS

It has the functions of large capacity V/f source, parallel operation mode, on-line switching, short circuit support, high protection level, cabinet design and so on, so as to ensure efficient, safe ...

[Request Quote](#)

## BSI-Container-40FT-500KW-2150kWh

This system is engineered for performance and durability. With 500KW of power and a massive 2150kWh of storage, it ensures stable energy supply during peak usage or grid outages. Its all ...

[Request Quote](#)



## [500KW 1075.2kWh/2236.416kWh battery storage container](#)

(2) Integrated container-type energy storage system design is convenient for transportation, simple construction, and low installation cost. (4)Outdoor design, protection grade IP54. (2) It has ...

[Request Quote](#)



## Contact Us

---

For catalog requests, pricing, or partnerships, please visit:

<https://www.energyinnovationday.pl>

Phone: +48 22 335 1273

Email: [info@energyinnovationday.pl](mailto:info@energyinnovationday.pl)

Scan the QR code to contact us via WhatsApp.

