



# Electromagnetic power generation of mobile base station equipment





## Overview

---

This paper presents the analysis of electromagnetic radiation of mobile base stations co-located with high-voltage transmission towers. Although the layout of power poles and towers is uniform and symmetrical, the electromagnetic field radiated to the outside.

This paper presents the analysis of electromagnetic radiation of mobile base stations co-located with high-voltage transmission towers. Although the layout of power poles and towers is uniform and symmetrical, the electromagnetic field radiated to the outside.

This paper presents the analysis of electromagnetic radiation of mobile base stations co-located with high-voltage transmission towers. Although the layout of power poles and towers is uniform and symmetrical, the electromagnetic field radiated to the outside world is asymmetric. Field measurements.

Recommendation ITU-T K.114 specifies the electromagnetic compatibility common requirements and test methods for digital cellular mobile communication base station (BS) equipment, repeaters and associated ancillary equipment that are independent of any kind of wireless access technologies, such as.

This paper selects several typical scenes (Open spaces, building concentration areas, user and building intensive areas) for electromagnetic radiation monitoring, and analyzes the relationship between ambient radiated power density and base station background. The results show that the factors that.

A small isotropic 3-orthogonal E-field probe and a measurement system with an antenna and a spectrum analyzer, defined as a relatively simple measurement equipment, were used for the investigation on the uncertainty of the measurement of E-field strength around a base station. Measurement values.

Mobile communication networks are divided into geographic areas called cells, each served by a base station (Figure 1). Mobile phones are the user's link to the network. The system is planned to ensure that mobile phones maintain the link with the network as users move from one cell to another. To.

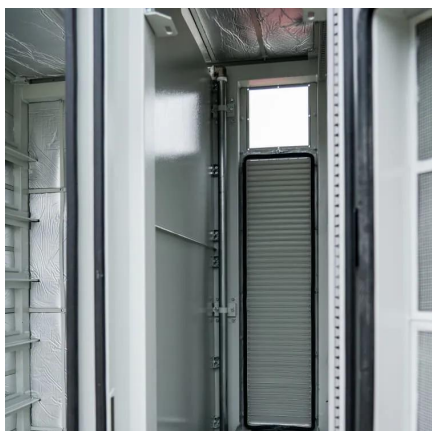
A novel method based on machine learning is proposed to estimate the



electromagnetic radiation level at the ground plane near fifth-generation (5G) base stations. The machine learning model was trained using data from various 5G base stations, enabling it to estimate the electric field intensity.



## Electromagnetic power generation of mobile base station equipment



### Base Stations

Base stations are important in the cellular communication as it facilitate seamless communication between mobile devices and the network communication. The demand for ...

[Request Quote](#)

### [Human exposure to EMF from 5G base stations: analysis, ...](#)

Performance of three different methodologies and equipment (broadband probes, spectrum analyzers, and drive test scanners), in the context of human exposure to ...

[Request Quote](#)



### Electromagnetic radiation estimation at the ground plane ...

With the rapid development of fifth-generation (5G) mobile telecommunication, the number of 5G base stations is increasing rapidly to ensure seamless coverage of the 5G network and meet ...

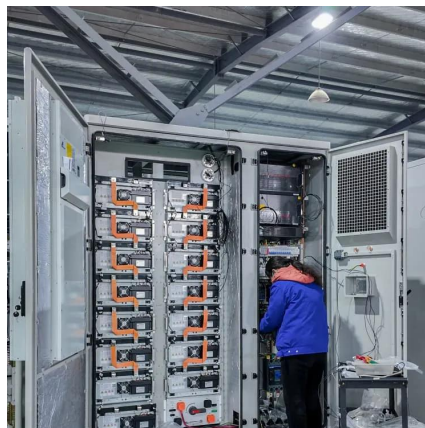
[Request Quote](#)

### Prediction of electromagnetic power density emitted from GSM base

In this study, electromagnetic power density of 31 different base stations was measured at 900 MHz frequency at 20, 40 and 60 meters distances from base stations.



[Request Quote](#)



### **Research on Electromagnetic Radiation Evaluation Methods for Mobile**

In order to clarify the electromagnetic radiation effects of mobile base stations installed on high-voltage transmission towers on electric power transportation

[Request Quote](#)



### **A study on the ambient electromagnetic radiation level of 5G ...**

This paper selects several typical scenes (Open spaces, building concentration areas, user and building intensive areas) for electromagnetic radiation monitoring, and analyzes the ...

[Request Quote](#)



### **Analysis of Electromagnetic Radiation of Mobile Base Stations Co**

This paper presents the analysis of electromagnetic radiation of mobile base stations co-located with high-voltage transmission towers. Although the layout of power poles ...

[Request Quote](#)



### **[Mobile Phone Base Stations EMF / Health](#)**



## [Fact Pack](#)

Therefore this document seeks to address such concerns by providing background information on the operation of mobile communication systems as well as providing answers to some of the ...

## [Request Quote](#)



## [Prediction of electromagnetic power density ...](#)

In this study, electromagnetic power density of 31 different base stations was measured at 900 MHz frequency at 20, 40 and 60 ...

## [Request Quote](#)

## [ITU-T Rec. K.114 \(08/2022\) Electromagnetic compatibility ...](#)

Test conditions for BSs used in variety modality are described, e.g., macro BS, distributed BS, micro BS, pico BS, integral antenna BS, active antenna BS and over the air active antenna ...

## [Request Quote](#)



## [3-4 Measurements of the Electromagnetic Field from a ...](#)

Mobile phone systems continue to develop, and recently seems necessary to investigate measurement of electromagnetic field strength from base stations that operate CA, TD-LTE ...

## [Request Quote](#)



## Contact Us

---

For catalog requests, pricing, or partnerships, please visit:

<https://www.energyinnovationday.pl>

Phone: +48 22 335 1273

Email: [info@energyinnovationday.pl](mailto:info@energyinnovationday.pl)

Scan the QR code to contact us via WhatsApp.

