



EK sine wave inverter tn-3000





EK sine wave inverter tn-3000



TN-3000 Datasheet (PDF)

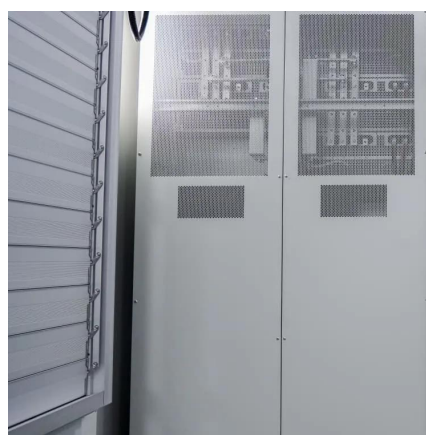
Description: 3000W True Sine Wave DC-AC Inverter with Solar Charger. Manufacturer: Mean Well Enterprises Co., Ltd..

[Request Quote](#)

TN-3000

Home / DC-AC True Sine Wave / TN-3000 TN-3000 Series 3000W True Sine Wave DC-AC Inverter with Solar Charger

[Request Quote](#)



[3000W True Sine Wave DC-AC Inverter with Solar Charger ...](#)

Solar time rate: Percentage of time period that the solar charger is functioning after turning on the TN-3000 unit. Loading average: Average loading after turning on the TN-3000 unit.

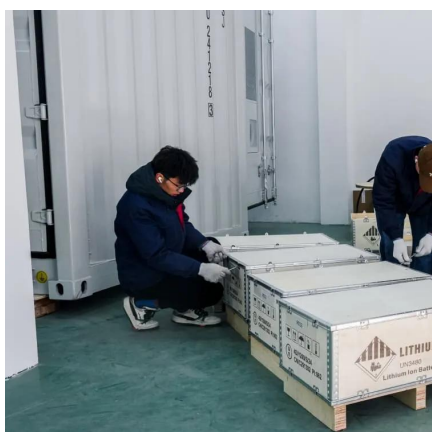
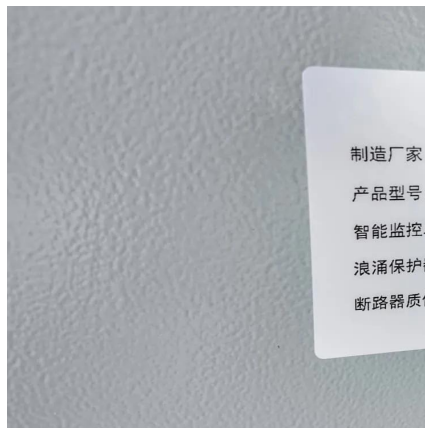
[Request Quote](#)

[MEAN WELL TN-3000-212B Power Supply, DC/AC Inverter, ...](#)

3000 W true sine wave AC-DC inverter with built in solar and AC charger. These true sine wave AC-DC inverters have a selectable UPS and energy saving mode, a standby saving mode and ...



[Request Quote](#)



[TN/TS-3000 Inverter Instruction Manual](#)

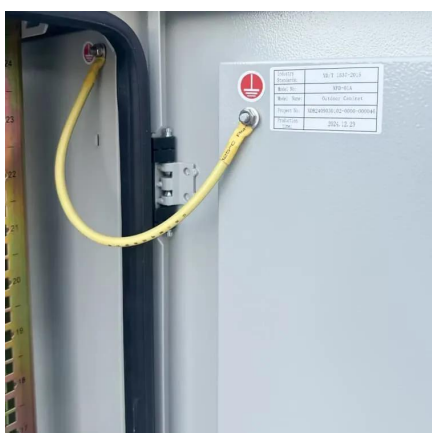
(B)Inverter mode: Under the inverter mode, if any abnormal situation occurs, the display panel will send out failure message (please refer to table 6.1 for failure condition).

[Request Quote](#)

TN-3000.cdr

Status of unit: Indicating current operating status of TN-3000. Signals that display current condition of the unit. User can adjust the settings based on the characteristics of batteries ...

[Request Quote](#)



TN-3000 Series

We stock an extensive range quality including a TN-3000 Series manufactured by Mean Well providing you with excellent solutions available.

[Request Quote](#)

[MEAN WELL TN-3000 INSTRUCTION](#)



[MANUAL Pdf Download](#)

View and Download Mean Well TN-3000 instruction manual online. TN-3000 inverter pdf manual download. Also for: Ts-3000.

[Request Quote](#)



TN-3000

A series of TN converters with a real sine wave is designed to work with solar panels. The inverter allows you to charge the batteries with solar panels (and from the 230V network if the current ...

[Request Quote](#)

TN-3000.cdr

DC current is tested by 3000W, linear load at 12V, 24V, 48V input voltage. All parameters not specified above are measured at rated load, 25 of ambient temperature.

[Request Quote](#)





Contact Us

For catalog requests, pricing, or partnerships, please visit:

<https://www.energyinnovationday.pl>

Phone: +48 22 335 1273

Email: info@energyinnovationday.pl

Scan the QR code to contact us via WhatsApp.

