

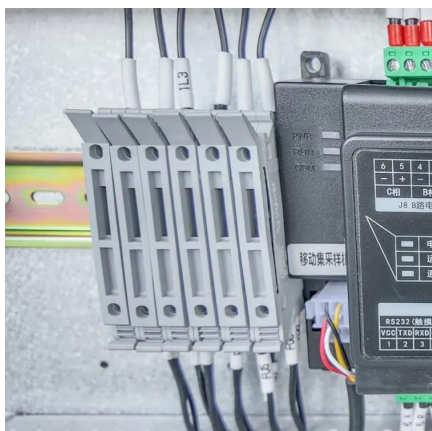


Double throw breaker in China in Slovakia





Double throw breaker in China in Slovakia



[What is the difference between float and double?](#)

I've read about the difference between double precision and single precision. However, in most cases, float and double seem to be interchangeable, i.e. using one or the ...

[Request Quote](#)

C

AFAIK, C supports just a few data types: int, float, double, char, void enum. I need to store a number that could reach into the high 10 digits. Since I'm getting a low 10 digit # from ...

[Request Quote](#)



What's the difference between a single precision and double ...

The term double precision is something of a misnomer because the precision is not really double. The word double derives from the fact that a double-precision number uses twice as many bits ...

[Request Quote](#)



C++

From what I have read, a value of data type double has an approximate precision of 15 decimal places. However, when I use a number whose decimal representation repeats, ...

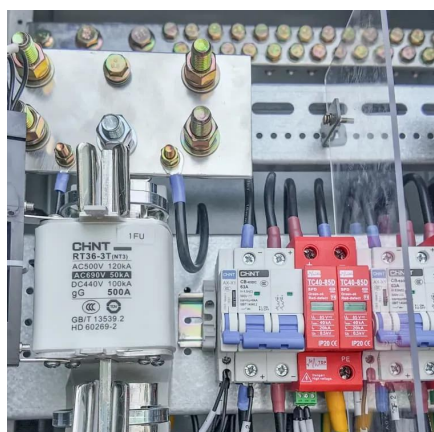
[Request Quote](#)



[Difference between long double and double in C and C++](#)

Possible Duplicate: long double vs double I am unable to understand the difference between long double and double in C and C++. Can anyone help?

[Request Quote](#)



How do I print a double value with full precision using cout?

In my earlier question I was printing a double using cout that got rounded when I wasn't expecting it. How can I make cout print a double using full precision?

[Request Quote](#)



decimal vs double!

When should I use double instead of decimal? has some similar and more in depth answers. Using double instead of decimal for monetary applications is a micro-optimization - ...

[Request Quote](#)

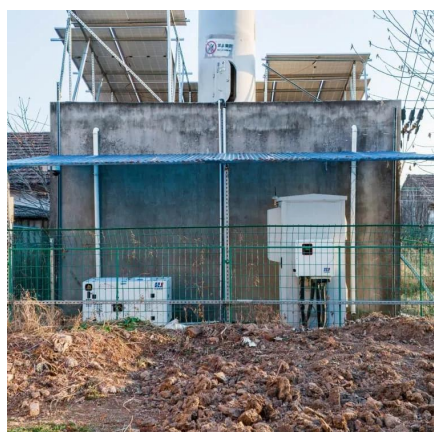
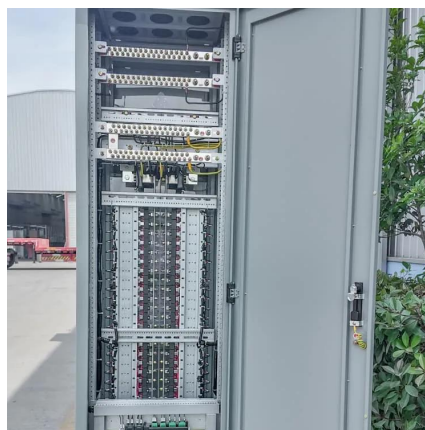


java



494 A Double is not an Integer, so the cast won't work. Note the difference between the Double class and the double primitive. Also note that a Double is a Number, so it has the method ...

[Request Quote](#)



[Correct format specifier for double in printf](#)

Format %lf in printf was not supported in old (pre-C99) versions of C language, which created superficial "inconsistency" between format specifiers for double in printf and scanf.

[Request Quote](#)

Should I use double or float?

A double has a much higher precision due to its difference in size. If the numbers you are using will commonly exceed the value of a float, then use a double. Several other ...

[Request Quote](#)





Contact Us

For catalog requests, pricing, or partnerships, please visit:

<https://www.energyinnovationday.pl>

Phone: +48 22 335 1273

Email: info@energyinnovationday.pl

Scan the QR code to contact us via WhatsApp.

