



Double-layer roof solar panels





Overview

Double-layer solar panels utilize two layers of photovoltaic cells, allowing them to capture more light and convert it into energy more efficiently than traditional single-layer panels.

Double-layer solar panels utilize two layers of photovoltaic cells, allowing them to capture more light and convert it into energy more efficiently than traditional single-layer panels.

In the ever-evolving world of photovoltaic technology, double glass solar modules are emerging as a game-changer. By encapsulating solar cells between two layers of glass, these modules offer unparalleled durability and efficiency. But what exactly sets them apart?

What are double glass solar.

Bifacial solar panels are known to increase electricity generation by up to 27%. Why trust EnergySage?

As subject matter experts, we provide only objective information. We design every article to provide you with deeply-researched, factual, useful information so that you can make informed home.

Bifacial photovoltaic modules are available in two types: single-glass bifacial modules and double-glass bifacial modules. Single-glass bifacial modules are lightweight and suitable for rooftop installations, while double-glass bifacial modules provide greater resistance to weather conditions.

As solar technology evolves, homeowners face a crucial decision between traditional monofacial panels and their innovative bifacial counterparts. While monofacial panels capture sunlight only from their front surface, bifacial panels harness energy from both sides, potentially boosting energy.

Install Solar Roof and power your home with a fully integrated solar and energy storage system. The glass solar tiles and steel roofing tiles look great up close and from the street, complementing your home's natural styling. Schedule a virtual consultation with a Tesla Advisor to learn more.



One of the most promising developments in recent years is the combination of double-layer solar panels with an IP65 rating, which offers exceptional performance in diverse settings. Double-layer solar panels utilize two layers of photovoltaic cells, allowing them to capture more light and convert.



Double-layer roof solar panels



[Double the strengths, double the benefits](#)

In the ever-evolving world of photovoltaic technology, double glass solar modules are emerging as a game-changer. By encapsulating ...

[Request Quote](#)

Bifacial Solar Panels: The Technology Behind Dual-Sided Power

Traditional panels, also known as monofacial modules, consist of solar cells that absorb sunlight to generate power from one side only. But bifacial panels are different as they can absorb light ...

[Request Quote](#)



Bifacial Solar Panels on Roof: Benefits, Design and Installation ...

What Are Bifacial Solar Panels And How Do They Work? Bifacial solar panels generate electricity from light striking both the front and rear surfaces, using transparent ...

[Request Quote](#)

[Double the strengths, double the benefits](#)

In the ever-evolving world of photovoltaic technology, double glass solar modules are emerging as a game-changer. By encapsulating solar cells between two layers of glass, ...

[Request Quote](#)





[Bifacial Solar Modules , Maysun Solar](#)

Traditional monofacial panels use an opaque backsheet, whereas bifacial solar panels incorporate a reflective backsheet or a double-glass layer, ...

[Request Quote](#)



Solar Powered Roof Tiles

Built with all-weather durability, Solar Roof consistently generates energy for years, maximizing your solar investment over time. Learn more about Solar Roof.

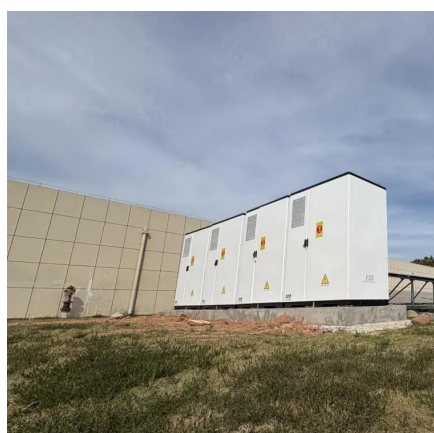
[Request Quote](#)



[Bifacial solar panels: What you need to know](#)

Manufacturers are now able to produce bifacial panels, which feature energy-producing solar cells on both sides of the panel. With two faces capable of absorbing sunlight, ...

[Request Quote](#)



Why Dual-Glass is the best solar



panel technology for rooftops

With solar power evolving into a mainstream energy source, industry leaders and experts are starting to look beyond traditional solar panels. Dual-glass technology for rooftop ...

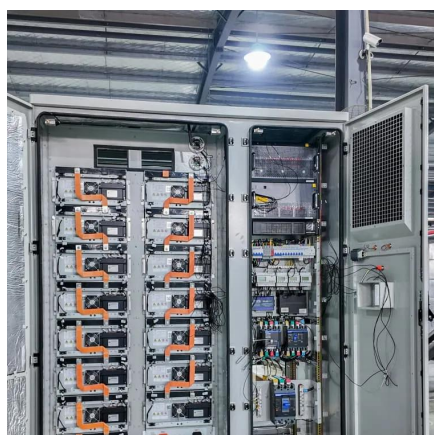
[Request Quote](#)



[Bifacial Solar Modules , Maysun Solar](#)

Traditional monofacial panels use an opaque backsheet, whereas bifacial solar panels incorporate a reflective backsheet or a double-glass layer, enclosing the solar cells between these two ...

[Request Quote](#)



Bifacial Solar Panels: The Double-Sided Solution That Could ...

While traditional monofacial panels have an opaque backsheet, bifacial panels feature a transparent or translucent back layer that allows light to reach the solar cells from ...

[Request Quote](#)



[An Introduction to Bifacial Solar Panels](#)

Bifacial solar panels are a relatively new technology that has increased in popularity over the past few years. These double-sided panels trade increased efficiency for a slightly more difficult ...

[Request Quote](#)



Double-Layer Solar Panels with IP65



Protection: A Perfect Fit for

Double-layer solar panels utilize two layers of photovoltaic cells, allowing them to capture more light and convert it into energy more efficiently than traditional single-layer panels.

[Request Quote](#)





Contact Us

For catalog requests, pricing, or partnerships, please visit:

<https://www.energyinnovationday.pl>

Phone: +48 22 335 1273

Email: info@energyinnovationday.pl

Scan the QR code to contact us via WhatsApp.

