



# Does the solar container lithium battery BMS need to be turned on





## Overview

---

It is mandatory to install either an on/off switch between L and H of the remote on/off terminal or the wire loop (default) for correct operation. The Smart BMS is now ready for use.

It is mandatory to install either an on/off switch between L and H of the remote on/off terminal or the wire loop (default) for correct operation. The Smart BMS is now ready for use.

A BMS is the command center responsible for several vital functions that protect the battery and optimize its performance. Its primary duties include: Monitoring: The BMS continuously tracks critical parameters like the voltage, current, and temperature of individual cells and the entire battery.

For DC loads with a remote on/off terminal that switches the load on when the terminal is pulled low (to battery minus) and switches it off when the terminal is left free floating, the Inverting remote on-off cable can be used. See Appendix A. Note: please check the residual current of the load.

The BMS checks three things before allowing a battery to charge: Temperature: Is it warm enough?

Voltage: Is it within acceptable range?

Current: Is the incoming current appropriate?

If all three conditions are met, the battery is allowed to charge. Otherwise, the BMS disconnects the battery to.

Could an external Battery Management System (BMS) be the solution?

In this guide, we'll explore whether you can add an external BMS to your lithium battery, how it works, and why it might be a game-changer for your energy system. 1. What is a BMS?

A Battery Management System (BMS) is an electronic.



A BMS LiFePO<sub>4</sub> keeps your pack safe, efficient, and easy to service—when you size it correctly and set it up by the book. In this guide, BMS LiFePO<sub>4</sub> refers to a LiFePO<sub>4</sub> battery management system tuned for LiFePO<sub>4</sub> chemistry. You'll learn what it does, how it protects each cell, the wiring and.

Communication between a BMS and a solar inverter is crucial for optimal system performance. They utilize standardized communication protocols such as Modbus or CAN, enabling the exchange of real-time information. This communication allows the solar inverter to adjust its operations based on the.



## Does the solar container lithium battery BMS need to be turned on



### [Understanding Battery Management Systems ...](#)

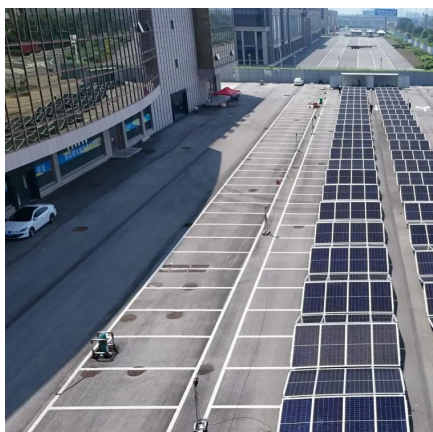
Think of the BMS as a computerized gatekeeper, making sure your battery only operates within safe conditions. If those conditions aren't met, the ...

[Request Quote](#)

### **BMS for Lithium-Ion Batteries: The Essential Guide to Battery**

Frequently Asked Questions Q1: Can I use a lithium-ion battery without a BMS? A: Operating lithium-ion batteries without proper BMS protection is extremely dangerous and not ...

[Request Quote](#)



### [Solar Battery BMS: What the Battery Management System ...](#)

Every solar battery has a hidden hero inside it -- the BMS, or Battery Management System. You won't see it on the outside, and you won't interact with it directly, but it quietly ...

[Request Quote](#)

### [BMS LiFePO4 Guide: Safety, Setup & Sizing](#)

Can I DIY A LiFePO4 Battery With A BMS? 1. Key Terms To Know Before Choosing A BMS. 2. Power Calculation Formulas ( $V \times A = W$ ;  $W \div V = A$ )

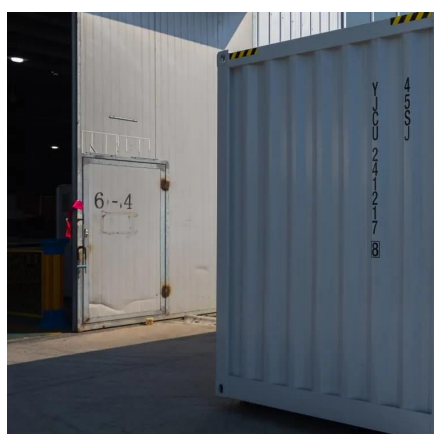
[Request Quote](#)



### [Understanding Battery Management Systems \(BMS\) in Lithium ...](#)

Think of the BMS as a computerized gatekeeper, making sure your battery only operates within safe conditions. If those conditions aren't met, the BMS steps in and disconnects the battery ...

[Request Quote](#)



### **BMS Insights: Key to Lithium Battery Safety & Efficiency , NAZ Solar**

In such a system, the Battery Management System (BMS)'s activation of the contactor occurs infrequently, thereby sparing it from excessive use. By minimizing the ...

[Request Quote](#)



### **Can You Add an External BMS to Lithium Batteries? A Complete ...**

In this guide, we'll explore whether you can add an external BMS to your lithium battery, how it works, and why it might be a game-changer for your energy system.

[Request Quote](#)



### **3. Installation and configuration**



Lithium batteries are expensive and can be damaged due to over discharge or over charge. The shutdown due to low cell voltage by the BMS should always be used as a last resort to be on ...

[Request Quote](#)

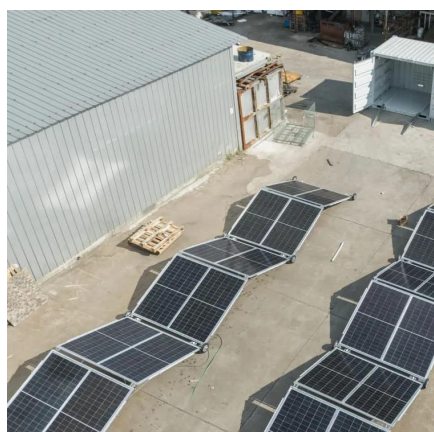


## [Can You Add an External BMS to Lithium](#)

...

In this guide, we'll explore whether you can add an external BMS to your lithium battery, how it works, and why it might be a game ...

[Request Quote](#)



## [Understanding BMS and its Integration with Solar Inverters](#)

Another misconception is that the BMS and solar inverters do not need to be connected or communicate with each other. In reality, the BMS plays a crucial role in ...

[Request Quote](#)



## [Balancing, BMS, and Firmware Updates](#)

A properly functioning BMS is the first line of defense against premature battery degradation and safety issues. Proactive maintenance, including periodic checks and ensuring ...

[Request Quote](#)



## [Battery Management Systems \(BMS\) for](#)



## [Solar Storage](#)

This essential data informs the BMS when to stop charging or discharging to prevent battery damage or degradation, hence prolonging the life of your solar battery.

[Request Quote](#)





## Contact Us

---

For catalog requests, pricing, or partnerships, please visit:

<https://www.energyinnovationday.pl>

Phone: +48 22 335 1273

Email: [info@energyinnovationday.pl](mailto:info@energyinnovationday.pl)

Scan the QR code to contact us via WhatsApp.

