

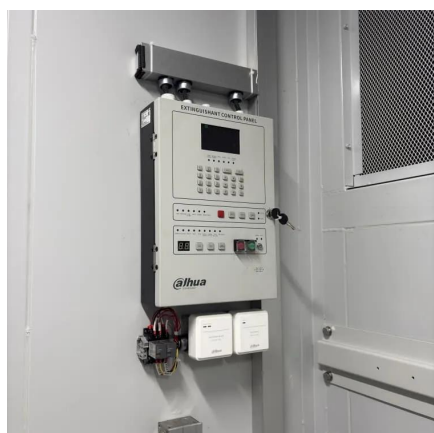


# Does the inverter have low voltage protection





## Does the inverter have low voltage protection



### [A comprehensive guide to inverter voltage](#)

Low voltage protection: Inverters usually have low voltage protection, when the input voltage is lower than the start voltage, the inverter will stop output to prevent damage or ...

[Request Quote](#)

### [Choosing a Low Voltage Disconnect , Africa Field ...](#)

All inverters have some sort of LVD built-in to protect the inverter from running on too low a voltage, but often the voltage is not settable, or the ...

[Request Quote](#)



### **Choosing a Low Voltage Disconnect , Africa Field Systems ...**

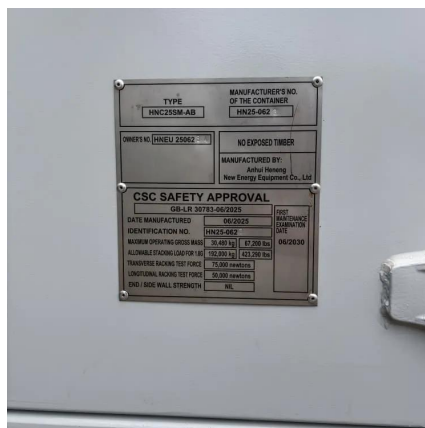
All inverters have some sort of LVD built-in to protect the inverter from running on too low a voltage, but often the voltage is not settable, or the voltage range is too low to properly protect ...

[Request Quote](#)

### [Inverter Protection: Why It's Important and How to ...](#)

Overload protection: This type of protection is designed to protect the inverter from being overloaded. Under-voltage protection: This ...

[Request Quote](#)



## Inverter Protection: Why It's Important and How to Ensure Yours

...

Overload protection: This type of protection is designed to protect the inverter from being overloaded. Under-voltage protection: This type of protection is designed to protect the ...

[Request Quote](#)



## [A comprehensive guide to inverter voltage](#)

Low voltage protection: Inverters usually have low voltage protection, when the input voltage is lower than the start voltage, the ...

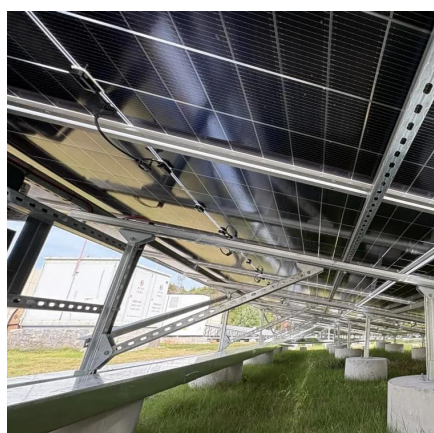
[Request Quote](#)



## What is the low

Low - voltage protection helps to prevent these problems by shutting down the inverter when the voltage is too low. This not only protects the inverter but also reduces the ...

[Request Quote](#)



## [How to Address Inverter Low Voltage](#)



## [Issues for Reliable ...](#)

Adjust Low Voltage Protection Settings Many inverters have built-in low voltage protection that triggers shutdowns when the supply voltage drops below a preset threshold.

[Request Quote](#)



## [What are the protection circuits used in inverters](#)

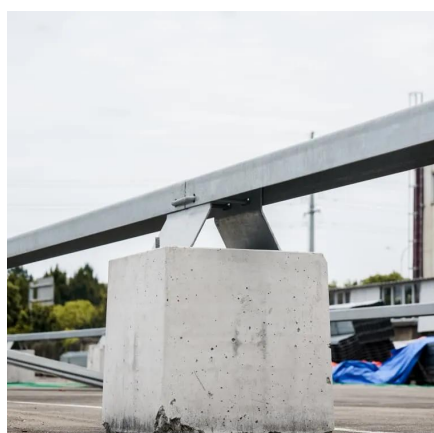
Undervoltage protection keeps your inverter from running when voltage is too low. If voltage drops below a safe level, the inverter may not work right. It could even hurt the things you plug into it.

[Request Quote](#)

## [How to Address Inverter Low Voltage Issues for ...](#)

Adjust Low Voltage Protection Settings Many inverters have built-in low voltage protection that triggers shutdowns when the supply ...

[Request Quote](#)



## [What are the power protection functions of the inverter](#)

In addition, the undervoltage protection function ensures that the inverter will not operate under low voltage conditions, thereby avoiding damage to the equipment due to low voltage and ...

[Request Quote](#)

## **What are the Low Voltage and High**



## Voltage Protection of Inverters?

Therefore, the inverter sets a low voltage protection to avoid the above situation of the battery and extend the battery life as much as possible.

[Request Quote](#)



## What is the under

When the inverter shuts off due to low voltage, it ensures that the devices connected to it don't receive an unstable or insufficient power supply. This is especially important for sensitive ...

[Request Quote](#)

## 9. Inverter Settings

To set the low battery voltage level at which the inverter shuts off - To ensure long battery life, this value should be set according to your battery manufacturer specification. 4. To set the voltage

...

[Request Quote](#)





## Contact Us

---

For catalog requests, pricing, or partnerships, please visit:

<https://www.energyinnovationday.pl>

Phone: +48 22 335 1273

Email: [info@energyinnovationday.pl](mailto:info@energyinnovationday.pl)

Scan the QR code to contact us via WhatsApp.

