



Does the flywheel energy storage solar container perform well





Overview

A typical system consists of a flywheel supported by connected to a . The flywheel and sometimes motor-generator may be enclosed in a to reduce friction and energy loss. First-generation flywheel energy-storage systems use a large flywheel rotating on mechanical bearings. Newer systems use composite

Energy storage flywheels are usually supported by active magnetic bearing (AMB) systems to avoid friction loss. Therefore, it can store energy at high efficiency over a long duration.

Energy storage flywheels are usually supported by active magnetic bearing (AMB) systems to avoid friction loss. Therefore, it can store energy at high efficiency over a long duration.

However, wind and solar power's intermittent nature prevents them from being independent and reliable energy sources for micro-grids. Energy storage systems (ESS) play an essential role in providing continuous and high-quality power. ESSs store intermittent renewable energy to create reliable.

Flywheel energy storage (FES) works by spinning a rotor (flywheel) and maintaining the energy in the system as rotational energy. When energy is extracted from the system, the flywheel's rotational speed is reduced as a consequence of the principle of conservation of energy; adding energy to the.

In an era where renewable energy adoption surges, the flywheel storage system emerges as a revolutionary solution to one critical question: How can we store energy efficiently without degrading performance over time?

This mechanical marvel converts electricity into kinetic energy, offering.

Flywheel technology is a sophisticated energy storage system that uses a spinning wheel to store mechanical energy as rotational energy. This system ensures high energy output and efficient recovery. With forces that help keep the flywheel stable, it can maintain efficiency. These flywheels are.

Flywheel energy storage systems have gained increased popularity as a method of environmentally friendly energy storage. Fly wheels store energy in mechanical rotational energy to be then converted into the required power form when required. Energy storage is a vital component of any power system.



A flywheel energy storage system is a mechanical device used to store energy through rotational motion. When excess electricity is available, it is used to accelerate a flywheel to a very high speed. The energy is stored as kinetic energy and can be retrieved by slowing down the flywheel.



Does the flywheel energy storage solar container perform well



Flywheels in renewable energy Systems: An analysis of their role ...

FESSs are characterized by their high-power density, rapid response times, an exceptional cycle life, and high efficiency, which make them particularly suitable for ...

[Request Quote](#)

[Flywheel Energy Storage Systems and Their ...](#)

This study gives a critical review of flywheel energy storage systems and their feasibility in various applications. Flywheel energy ...

[Request Quote](#)



Flywheel Energy Storage System: What Is It and How Does It ...

While battery storage remains the dominant choice for long-term energy storage, flywheel systems are well-suited for applications requiring rapid energy release and frequent cycling.

[Request Quote](#)

Flywheel energy storage

Overview
Main components
Physical characteristics
Applications
Comparison to electric batteries
See also
Further reading
External links

A typical system consists of a flywheel supported by rolling-element bearing connected to a motor-generator. The flywheel and sometimes motor-



generator may be enclosed in a vacuum chamber to reduce friction and energy loss. First-generation flywheel energy-storage systems use a large steel flywheel rotating on mechanical bearings. Newer systems use carbon-fiber composite rotors

[Request Quote](#)



Flywheel Energy Storage Explained: Fast, Durable And Reliable ...

This article explores the fundamentals, applications, economics and future of flywheel energy storage and shows how it fits into modern grids, renewable systems and ...

[Request Quote](#)



Flywheel Energy Storage: A High-Efficiency Solution

By storing kinetic energy as the flywheel spins, energy can be rapidly discharged when needed. The robust design, reinforced by high-strength materials, ensures durability ...

[Request Quote](#)



Flywheel Energy Storage Systems and Their Applications: A Review

This study gives a critical review of flywheel energy storage systems and their feasibility in various applications. Flywheel energy storage systems have gained increased ...

[Request Quote](#)



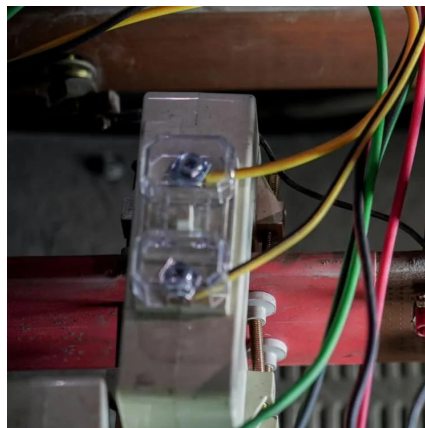
Flywheel Energy Storage Systems



and their Applications: A ...

Flywheel energy storage systems have gained increased popularity as a method of environmentally friendly energy storage. Fly wheels store energy in mechanical rotational ...

[Request Quote](#)



Flywheel Storage System: The Future of Energy Resilience and ...

Enter the flywheel energy storage system--a zero-degradation alternative that lasts 20+ years. Unlike chemical storage, it uses rotational inertia to store energy, achieving 90-95% round-trip ...

[Request Quote](#)

A review of flywheel energy storage systems: state of the art ...

The ex-isting energy storage systems use various technologies, including hydro-electricity, batteries, supercapacitors, thermal storage, energy storage flywheels,[2] and ...

[Request Quote](#)



Flywheel energy storage

First-generation flywheel energy-storage systems use a large steel flywheel rotating on mechanical bearings. Newer systems use carbon-fiber composite rotors that have a higher ...

[Request Quote](#)

[Flywheel Energy Storage: A High-](#)



[Efficiency Solution](#)

By storing kinetic energy as the flywheel spins, energy can be rapidly discharged when needed. The robust ...

[Request Quote](#)



Technology: Flywheel Energy Storage

FESS is used for short-time storage and typically offered with a charging/discharging duration between 20 seconds and 20 minutes. However, one 4-hour duration system is available on the ...

[Request Quote](#)

[Flywheel Energy Storage System: What Is It and ...](#)

While battery storage remains the dominant choice for long-term energy storage, flywheel systems are well-suited for applications requiring rapid ...

[Request Quote](#)





Contact Us

For catalog requests, pricing, or partnerships, please visit:

<https://www.energyinnovationday.pl>

Phone: +48 22 335 1273

Email: info@energyinnovationday.pl

Scan the QR code to contact us via WhatsApp.

