



Does the base station consume a lot of power





Overview

How to reduce the energy consumption of a base station?

So when the inter-cell distance is too large, it is necessary to increase the distance between cells, thus reducing the power consumption of the base station. In the actual network, in order to reduce the energy loss caused by frequent switching, the following two methods can usually be used: increase the distance between cells.

How much power does a 5G base station use?

“A 5G base station is generally expected to consume roughly three times as much power as a 4G base station. And more 5G base stations are needed to cover the same area,” -IEEE Spectrum, 5G’s Waveform Is a Battery Vampire.

Why does a base station lose a lot of power?

Because switching is a continuous process and the base station is a device that works periodically, the switching loss accounts for a large proportion of the total power consumption of the base station.

Are 5G base stations causing more energy consumption?

However, Li says 5G base stations are carrying five times the traffic as when equipped with only 4G, pushing up power consumption. The carrier is seeking subsidies from the Chinese government to help with the increased energy usage.



Does the base station consume a lot of power



What is 5G Energy Consumption?

With 5G projected to increase capacity up to approximately 1000-fold and high frequency millimeter wave (mmWave) transmission driving exponentially higher cell density, this ...

[Request Quote](#)

[5G base stations use a lot more energy than 4G ...](#)

A typical 5G base station consumes up to twice or more the ...

[Request Quote](#)



Key Factors Affecting Power Consumption in Telecom Base Stations

Discover the key factors influencing power consumption in telecom base stations. Optimize energy efficiency and reduce operational costs with our expert insights.

[Request Quote](#)

[Front Line Data Study about 5G Power ...](#)

The power consumption of a single 5G station is 2.5 to 3.5 times higher than that of a single 4G station. The main factor behind this increase in 5G ...

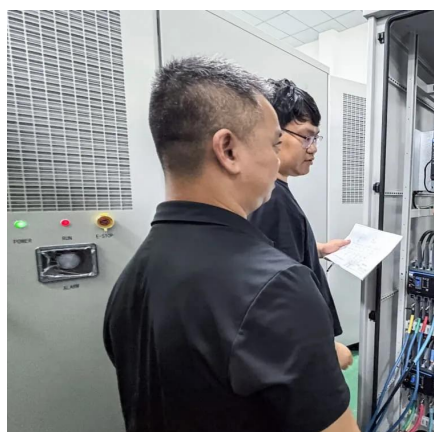
[Request Quote](#)



5G base stations use a lot more energy than 4G base stations: MTN

A typical 5G base station consumes up to twice or more the power of a 4G base station, writes MTN Consulting Chief Analyst Matt Walker in a new report entitled "Operators ...

[Request Quote](#)



[Power Consumption: 5G Basestations Are Hungry, Hungry Hippos](#)

The increased power consumption of next-generation basestations may be one of the dirty little secrets of 5G, which might not be a secret much longer as operators roll out ...

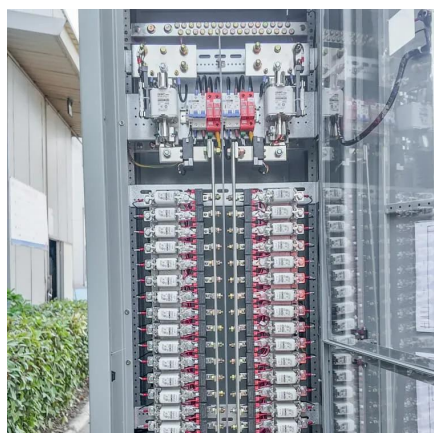
[Request Quote](#)



[Why does 5g base station consume so much ...](#)

5G base stations use high power consumption and high RF signals, which require more signal processing for digital and ...

[Request Quote](#)



Energy Consumption of 5G, Wireless



Systems and the Digital ...

Discover the key factors influencing power consumption in telecom base stations. Optimize energy efficiency and reduce operational ...

[Request Quote](#)



Energy Consumption of 5G, Wireless Systems and the Digital ...

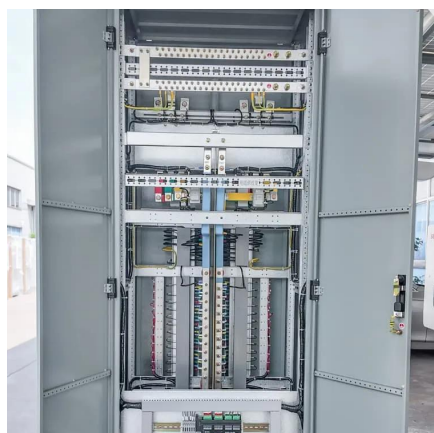
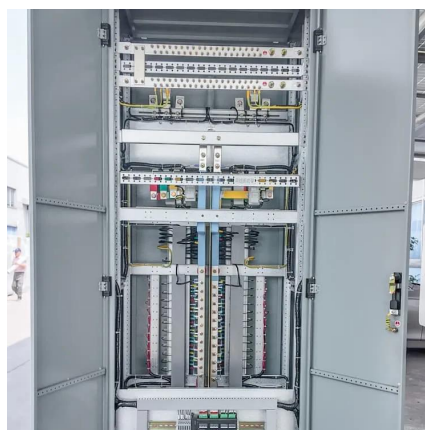
"A 5G base station is generally expected to consume roughly three times as much power as a 4G base station. And more 5G base stations are needed to cover the same area," -IEEE ...

[Request Quote](#)

The 5G Dilemma: More Base Stations, More ...

As evidence that this will be a likely outcome, a European Union project dubbed the MAMMOET project has predicted that future ...

[Request Quote](#)



The 5G Dilemma: More Base Stations, More Antennas--Less Energy?

As evidence that this will be a likely outcome, a European Union project dubbed the MAMMOET project has predicted that future massive MIMO base stations will consume less ...

[Request Quote](#)

How Much Power Does 5G Base Station



[Consume? , Huijue ...](#)

Have you ever wondered how much energy our hyper-connected world is consuming? 5G base stations, the backbone of next-gen connectivity, now draw 3-4 times ...

[Request Quote](#)



How much power does 5G consume?

One 5G base station is estimated to consume about as much power as 73 households (6), and 3x as much as the previous generation of base ...

[Request Quote](#)

How much power does 5G consume?

One 5G base station is estimated to consume about as much power as 73 households (6), and 3x as much as the previous generation of base stations (5), (7). When base stations, data centers ...

[Request Quote](#)



Why does 5g base station consume so much power and how to ...

5G base stations use high power consumption and high RF signals, which require more signal processing for digital and electromechanical units, and also put greater pressure ...

[Request Quote](#)

[Front Line Data Study about 5G Power](#)



Consumption

The power consumption of a single 5G station is 2.5 to 3.5 times higher than that of a single 4G station. The main factor behind this increase in 5G power consumption is the high power ...

[Request Quote](#)





Contact Us

For catalog requests, pricing, or partnerships, please visit:

<https://www.energyinnovationday.pl>

Phone: +48 22 335 1273

Email: info@energyinnovationday.pl

Scan the QR code to contact us via WhatsApp.

