



Does the base station belong to communication or telecommunication





Overview

A base station is a critical component in a telecommunications network. A fixed transceiver that acts as the central communication hub for one or more wireless mobile client devices. In the context of cellular networks, it facilitates wireless communication between mobile devices and.

A base station is a critical component in a telecommunications network. A fixed transceiver that acts as the central communication hub for one or more wireless mobile client devices. In the context of cellular networks, it facilitates wireless communication between mobile devices and.

Base station (or base radio station, BS) is – according to the International Telecommunication Union 's (ITU) Radio Regulations (RR) [1] – a " land station in the land mobile service." A base station is called node B in 3G, eNB in LTE (4G), and gNB in 5G. The term is used in the context of mobile.

A base station plays a pivotal role in the realm of telecommunications, acting as the cornerstone of connectivity. It enables seamless communication by linking various wireless devices to broader networks, ensuring that data flows efficiently from one point to another. A base station is an integral.

The present-day tele-space is incomplete without the base stations as these constitute an important part of the modern-day scheme of wireless communications. They are referred to as cell towers or cellular antennas. These types of objects are an inevitability since they serve the purpose of.

Often hidden in plain sight on rooftops or towers, base stations are the backbone of modern mobile networks. What Is a Base Station?

A base station is a fixed point of communication between mobile devices and the wider telecom network. It transmits and receives radio signals, enabling your phone to.

Base Station But what exactly is a base station, and how does it work in wireless communication networks?

This article explores the concept of base stations, their functions, and their



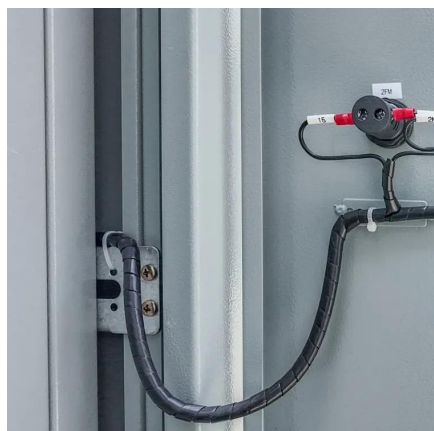
significance in the telecommunications ecosystem. What is a Base Station?

A base station is a fixed communication.

A base station is a critical component of wireless communication networks. It serves as the central point of a network that connects various devices, such as smartphones, tablets, and computers. The base station transmits and receives signals, ensuring seamless communication over radio frequencies.



Does the base station belong to communication or telecommunication



[What is a Base Station in Telecommunications?](#)

Base stations are the backbone of modern telecommunications networks, providing the essential infrastructure for wireless communication. They enable mobile devices to connect to the ...

[Request Quote](#)

Base station

In the area of wireless computer networking, a base station is a radio receiver/transmitter that serves as the hub of the local wireless network, and may also be the gateway between a wired ...

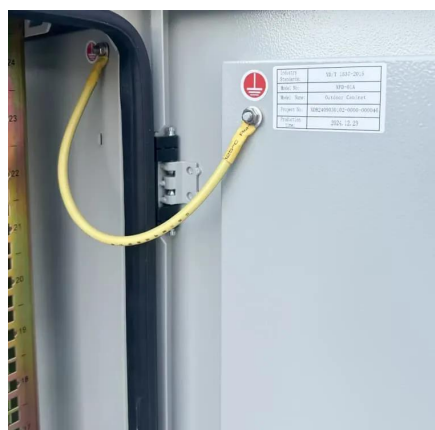
[Request Quote](#)



What Is A Base Station?

A base station is an integral component of wireless communication networks, serving as a central point that manages the transmission and reception of signals between ...

[Request Quote](#)



[What are Base Station in Telecommunications?](#)

The Backbone of Wireless Networks A base station connects your phone to the network. It acts as a hub between mobile devices and the core system. Base stations form the backbone of 4G ...



[Request Quote](#)



What is a base station?

In telecommunications, a base station is a fixed transceiver that is the main communication point for one or more wireless mobile client devices. A base station serves as ...

[Request Quote](#)

[Understanding Base Stations: The Backbone of Wireless ...](#)

A base station is a fixed communication infrastructure that connects mobile devices (such as smartphones, tablets, or IoT devices) to a network, enabling wireless communication.

[Request Quote](#)



What is a base station?

In telecommunications, a base station is a fixed transceiver that is the main communication point for one or more wireless mobile client ...

[Request Quote](#)

Base Stations



Base stations form a key part of modern wireless communication networks because they offer some crucial advantages, ...

[Request Quote](#)



[What Is a Base Station? Definition and How It Works](#)

A base station is a fixed transceiver that serves as the central communication point for mobile devices within a defined geographical area, known as a cell. It is sometimes called ...

[Request Quote](#)

[Base Station's Role in Wireless Communication Networks](#)

A base station is a critical component of wireless communication networks. It serves as the central point of a network that connects various devices, such as smartphones, tablets, and computers.

[Request Quote](#)



Understanding Base Stations: The Backbone of Wireless Communication

A base station is a fixed communication infrastructure that connects mobile devices (such as smartphones, tablets, or IoT devices) to a network, enabling wireless communication.

[Request Quote](#)

[Base Station's Role in Wireless](#)



Communication Networks

A base station is a critical component of wireless communication networks. It serves as the central point of a network that connects various devices, such as ...

[Request Quote](#)



What Does a Base Station Do and Why Is It Essential for ...

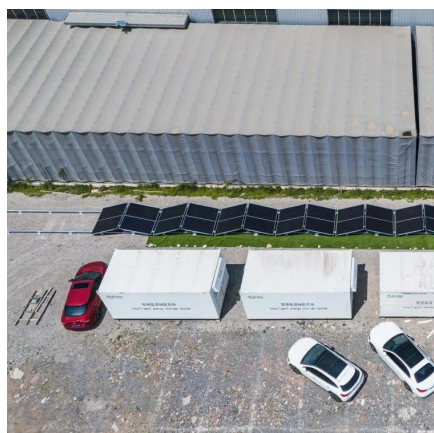
A base station is a fixed point of communication between mobile devices and the wider telecom network. It transmits and receives radio signals, enabling your phone to access ...

[Request Quote](#)

What is a Base Station in Telecommunications?

Base stations are the backbone of modern telecommunications networks, providing the essential infrastructure for wireless communication. They ...

[Request Quote](#)



Base Stations

Base stations form a key part of modern wireless communication networks because they offer some crucial advantages, such as wide coverage, continuous communications and ...

[Request Quote](#)



Contact Us

For catalog requests, pricing, or partnerships, please visit:

<https://www.energyinnovationday.pl>

Phone: +48 22 335 1273

Email: info@energyinnovationday.pl

Scan the QR code to contact us via WhatsApp.

