



Does the 5G base station have power at night



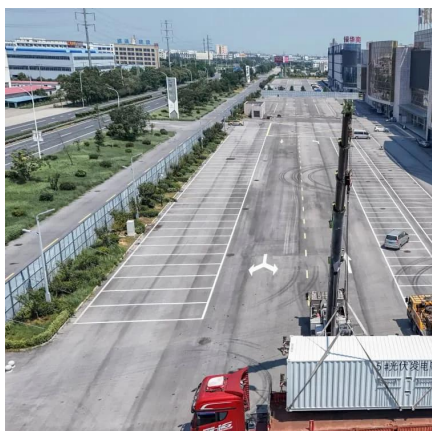


Overview

The explosive growth of mobile data traffic has resulted in a significant increase in the energy consumption of 5G base stations (BSs). However, the existing energy conservation technologies, such as traditi.



Does the 5G base station have power at night



5G base stations consume so much power that operators are ...

Information provided by Tower shows that the current average power consumption of a single tenant of a 5G outdoor base station is about 3.8KW, which is more than three times that of a ...

[Request Quote](#)

[Why does 5g base station consume so much ...](#)

During the night, 5G base stations do not open all functions on a daily basis, but only operate at the lowest threshold, and although 5G ...

[Request Quote](#)



Energy efficiency of 5G mobile networks with base station sleep ...

The paper presents system level simulation results on future base station energy saving using a time-triggered sleep model. The energy efficiency of future base station is ...

[Request Quote](#)

[A User-Driven Sleep and Wake-Up Technology for Energy ...](#)

As the primary source of energy consumption in communication networks, the power usage of 5G base station (BS) is a significant concern. The sleep mode (SM) of BS can be utilized to ...



[Request Quote](#)



How much power does a 5G base station consume? It is rumored ...

The high power consumption of 5G base stations is also one of the reasons why 5G communication is difficult to spread widely. There are even rumors that 5G will be shut down ...

[Request Quote](#)



[How Much Power Does 5G Base Station Consume? , Huijue ...](#)

Did you know? A single base station's nightly energy savings could power a EV for 45 miles - that's the scale we're addressing.

[Request Quote](#)



What is 5G Energy Consumption?

With 5G projected to increase capacity up to approximately 1000-fold and high frequency millimeter wave (mmWave) transmission driving exponentially higher cell density, this ...

[Request Quote](#)



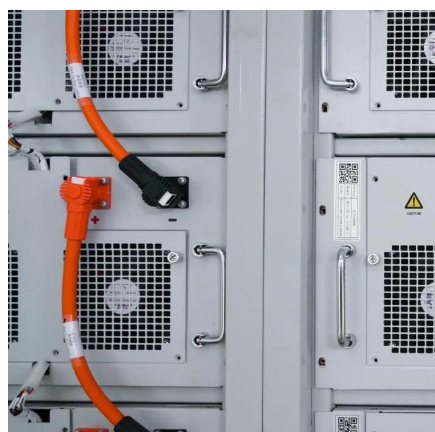
[Will the 5G base station lose power at](#)



night

Jul 22, 2018 · The rules adopted by the FCC allow a 5G base station operating in the millimeter range to emit an effective radiated power of up to 30,000 watts per 100 MHz of spectrum.

[Request Quote](#)



Does 5G base station consume power at night

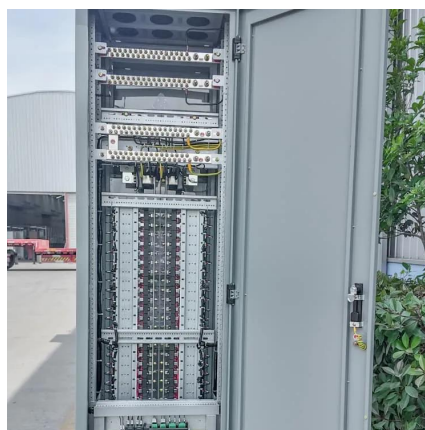
5G Base Station Power Consumption: With each base station carrying at least 5X more traffic and operating over more frequency bands, 5G base station power consumption is at least twice

[Request Quote](#)

Energy consumption optimization of 5G base stations considering

An energy consumption optimization strategy of 5G base stations (BSs) considering variable threshold sleep mechanism (ECOS-BS) is proposed, which includes the initial ...

[Request Quote](#)



A User-Driven Sleep and Wake-Up Technology for Energy-Efficient 5G

As the primary source of energy consumption in communication networks, the power usage of 5G base station (BS) is a significant concern. The sleep mode (SM) of BS can be utilized to ...

[Request Quote](#)

Why does 5g base station consume



so much power and how to ...

During the night, 5G base stations do not open all functions on a daily basis, but only operate at the lowest threshold, and although 5G devices are sleeping, they can still ...

[Request Quote](#)





Contact Us

For catalog requests, pricing, or partnerships, please visit:

<https://www.energyinnovationday.pl>

Phone: +48 22 335 1273

Email: info@energyinnovationday.pl

Scan the QR code to contact us via WhatsApp.

