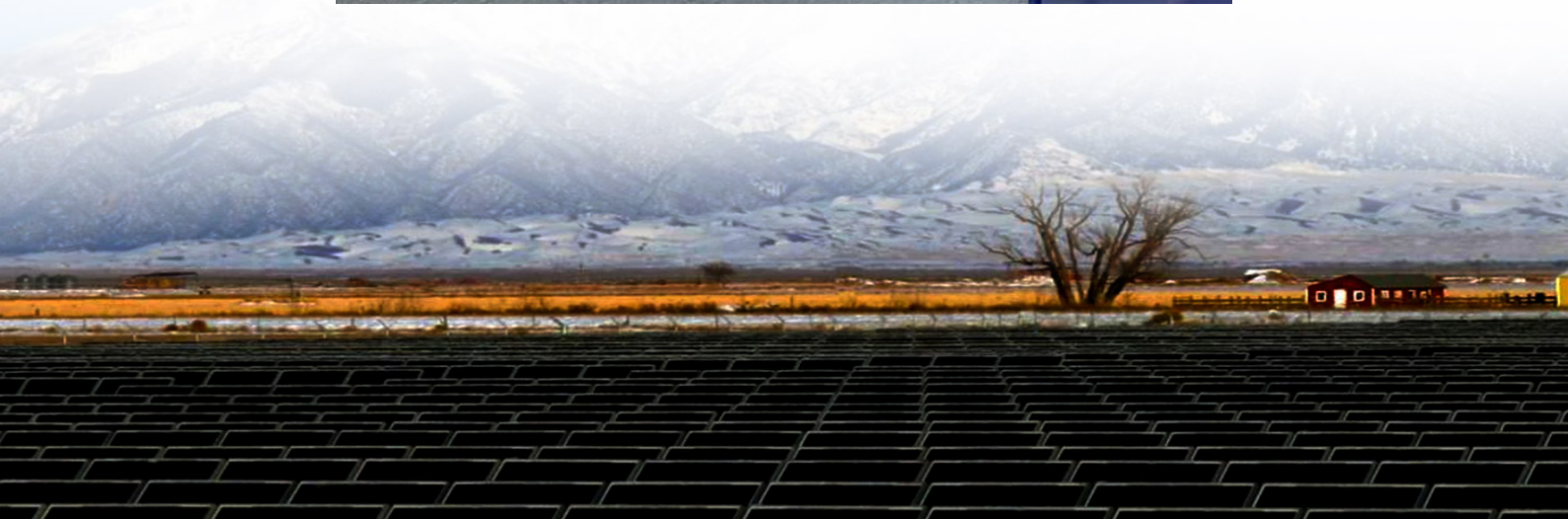
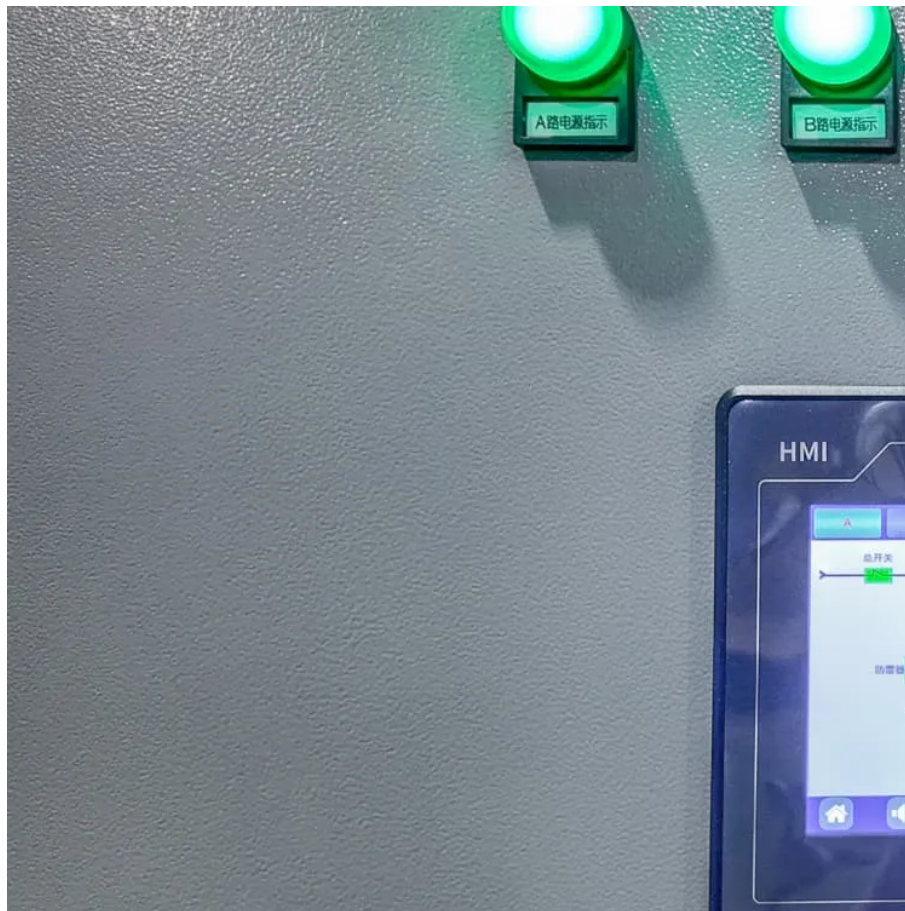




Does Chad s solar container communication station flow battery need to be approved for construction





Overview

All ESS/battery units must have a Certificate of Approval (COA) issued by the FDNY to be eligible for plan review and installation approval. A DOB construction work permit is required for each stationary ESS installation, regardless of capacity/size.

All ESS/battery units must have a Certificate of Approval (COA) issued by the FDNY to be eligible for plan review and installation approval. A DOB construction work permit is required for each stationary ESS installation, regardless of capacity/size.

From substations to hybrid renewable sites, energy infrastructure that plans to include an AC-coupled battery energy storage system (BESS) can be surprisingly complex both below ground and behind the scenes for developers, utilities, and contractors. Some ordinances may be obvious to the seasoned.

Solar permits exist for the same reason buildings permits (or really any permits!) exist: To confirm the system is safe and compliant with local codes. Solar permits protect homeowners, business owners, and the electrical grid. Solar permit requirements vary significantly by jurisdiction, but most.

The 2022 Building Energy Efficiency Standards (Energy Code) has battery storage system requirements for newly constructed nonresidential buildings that require a solar photovoltaic (solar PV) system (2022 Nonresidential Solar PV Fact Sheet). The solar PV requirements apply to buildings where at.

All energy storage systems for stationary installations and mobile systems require a product-specific approval called a Certificate of Approval (COA) from the New York City Fire Department (FDNY). To obtain a COA, the applicant (e.g., manufacturer or their authorized agent) must submit an FDNY.

With a growing emphasis on renewable energy sources like solar and wind, BESS plays a crucial role in stabilizing the power grid and ensuring a reliable supply of electricity. However, successful integration of BESS into the grid relies heavily on choosing the right site and meeting various.

Integrated solar flow batteries (SFBs) are a new type of device that integrates solar energy conversion and electrochemical storage. In SFBs, the solar energy absorbed by photoelectrodes is converted into chemical energy by charging up redox



couples dissolved in electrolyte solutions in contact. Are battery energy storage systems the future of grid stability?

Battery Energy Storage Systems represent the future of grid stability and energy efficiency. However, their successful implementation depends on the careful planning of key site requirements, such as regulatory compliance, fire safety, environmental impact, and system integration.

Are battery & energy storage systems CEC certified?

A list of certified batteries is available on the CEC website. covered by warranty or 70% of nameplate capacity under 10-year warranty. Do battery & energy storage systems need to be certified to the CEC to meet Reference Joint Appendix JA12 requirements?

Yes.

Can nonresidential buildings be excluded from battery storage requirements?

Yes. Four exceptions can exclude nonresidential buildings from the battery storage system requirements: Single-tenant buildings with < 5,000 square feet of conditioned floor area (CFA). For multi-tenant buildings, the battery storage system energy and power capacities are based on tenant spaces > 5,000 square feet of CFA.

Does a battery storage system need a rated usable energy capacity?

No. For compliance with the Energy Code the rated usable energy capacity of the battery storage system in kWh must be used for Equation 140.10-B - PDF. The usable capacity is the battery energy storage capacity in kWh that a manufacturer allows to be used for charging and discharging.



Does Chad s solar container communication station flow battery need



[2022 Nonresidential Battery Storage Systems](#)

A battery storage system can be installed as a standalone system for additional compliance credit, when not required prescriptively. Also, a battery system larger than the prescriptive ...

[Request Quote](#)

[How to Choose the Right Solar Containerized ...](#)

Learn how to choose the right solar containerized energy unit based on your energy needs, battery size, certifications, and deployment ...

[Request Quote](#)



[Energy Storage System Approval Process](#)

All ESS/battery units must have a Certificate of Approval (COA) issued by the FDNY to be eligible for plan review and installation approval. A DOB construction work permit is required for each ...

[Request Quote](#)



[CONSTRUCTION COMMENCES ON TWO SOLARBATTERY ...](#)

Technological advancements are dramatically improving solar storage container performance while reducing costs. Next-generation thermal management systems maintain optimal ...



[Request Quote](#)



[Four Overlooked BESS Project Requirements](#)

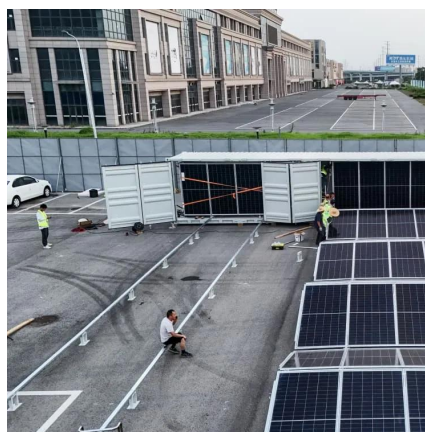
In the evolving world of renewables and power delivery, additional requirements may need to be considered by all stakeholders, including developers, contractors, and owners ...

[Request Quote](#)

[How to Choose the Right Solar Containerized Energy Unit](#)

Learn how to choose the right solar containerized energy unit based on your energy needs, battery size, certifications, and deployment conditions. A practical guide with ...

[Request Quote](#)



[Solar Permit Guide: Requirements & Permitting Checklist](#)

Learn how to navigate solar permit requirements, streamline approvals, and avoid common pitfalls. A comprehensive guide for solar installation professionals.

[Request Quote](#)



What does the solar container

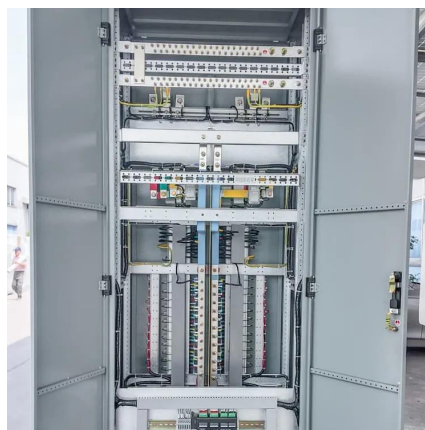


communication station flow battery

...

Redox flow batteries (RFBs) or flow batteries (FBs)--the two names are interchangeable in most cases--are an innovative technology that offers a bidirection

[Request Quote](#)



Energy Storage Development Process

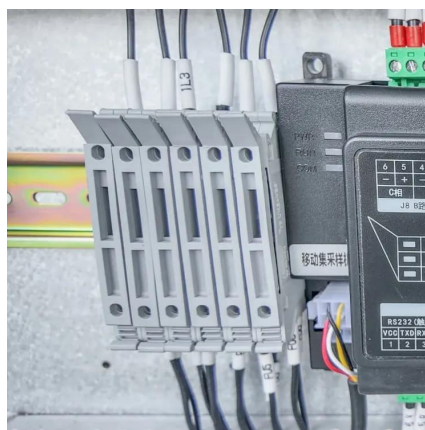
We then begin working with engineering, procurement, and construction partners for the project to be built, as well as completing local, state, and ...

[Request Quote](#)

Energy Storage Development Process

We then begin working with engineering, procurement, and construction partners for the project to be built, as well as completing local, state, and federal permitting processes.

[Request Quote](#)



[Solar Permit Guide: Requirements & Permitting ...](#)

Learn how to navigate solar permit requirements, streamline approvals, and avoid common pitfalls. A comprehensive guide for solar installation ...

[Request Quote](#)

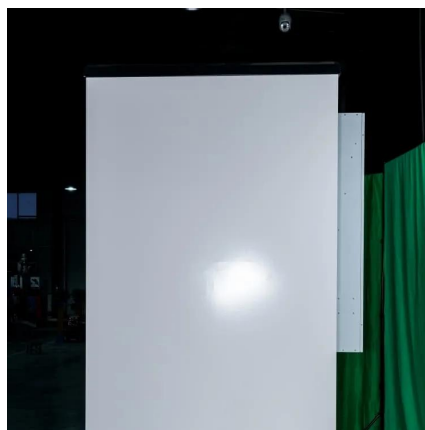
Which industry does the solar



container communication station flow

How do flow batteries work? Flow batteries operate distinctively from "solid" batteries (e.g., lead and lithium) in that a flow battery's energy is stored in the liquid electrolytes that are pumped ...

[Request Quote](#)



What are the Essential Site Requirements for Battery Energy ...

Before construction begins, the site must be prepared to support the installation of a BESS. This includes assessing the site's soil and ensuring that it is stable enough to support ...

[Request Quote](#)

CONSTRUCTION COMMENCES ON TWO SOLAR BATTERY HYBRID PROJECTS IN CHAD

Technological advancements are dramatically improving solar storage container performance while reducing costs. Next-generation thermal management systems maintain optimal ...

[Request Quote](#)



Which industry does the solar container communication station ...

How do flow batteries work? Flow batteries operate distinctively from "solid" batteries (e.g., lead and lithium) in that a flow battery's energy is stored in the liquid electrolytes that are pumped ...

[Request Quote](#)



Contact Us

For catalog requests, pricing, or partnerships, please visit:

<https://www.energyinnovationday.pl>

Phone: +48 22 335 1273

Email: info@energyinnovationday.pl

Scan the QR code to contact us via WhatsApp.

