



Does 5G base station construction require power equipment





Does 5G base station construction require power equipment



[Selecting the Right Supplies for Powering 5G Base Stations](#)

Additionally, these 5G cells will also include more integrated antennas to apply the massive multiple input, multiple output (MIMO) techniques for reliable connections. As a result, a ...

[Request Quote](#)

[Selecting the Right Supplies for Powering 5G Base Stations](#)

Additionally, these 5G cells will also include more integrated antennas to apply the massive multiple input, multiple output (MIMO) techniques for reliable connections. As a result, a ...

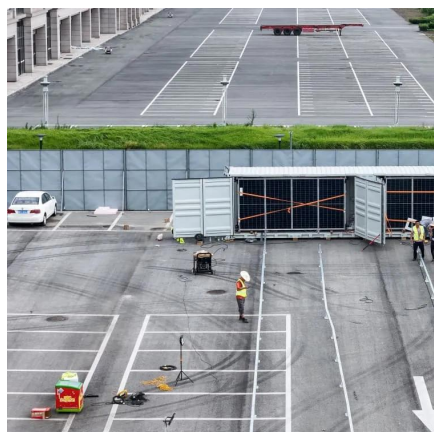
[Request Quote](#)



[The Road to Robust 5G: A Deep Dive into Base Station Power ...](#)

Leveraging our market-proven product performance and system adaptability, we have built a product line that covers all power supply scenarios for base stations, providing ...

[Request Quote](#)



Complete Guide to 5G Base Station Construction , Key Steps, Equipment

Explore how 5G base stations are built--from site planning and cabinet installation to power systems and cooling solutions. Learn the essential components, technologies, and ...



[Request Quote](#)



[5G infrastructure power supply design considerations \(Part I\)](#)

Devices in this part of the stack require power supply equipment that can operate at room temperatures indoors and protect sensitive electronics - already a well-developed area.

[Request Quote](#)



[Unveiling the 5G Base Station: The Backbone of Next-Gen ...](#)

5G base stations require robust power supply and cooling systems to ensure reliable and efficient operation. These systems provide the necessary energy to power the various components and ...

[Request Quote](#)



[Equipment Needed to Build a 5G Base Station](#)

Power systems including UPS units and batteries to ensure continuous operation of base station equipment. Infrastructure for the equipment room, such as air conditioning and ...

[Request Quote](#)



Site power equipment 2-4G and 5G



to Huawei data on RRU/BBU needs per site, the typical 5G site has power needs of over 11.5 kilowatts, up nearly 70% from a base station deploying a mix of 2G, 3G and 4G radios.

[Request Quote](#)



[Building Better Power Supplies For 5G Base Stations](#)

Building Better Power Supplies For 5G Base Stations by Alessandro Pevere, and Francesco Di Domenico, Infineon Technologies, Villach, Austria according to Ofcom, the UK's telecoms ...

[Request Quote](#)

5G-oriented Site Evolution

New antennas cannot be installed due to limited antenna space. The remaining capacity in existing battery cabinets is insufficient for 5G devices. Adding massive MIMO devices requires ...

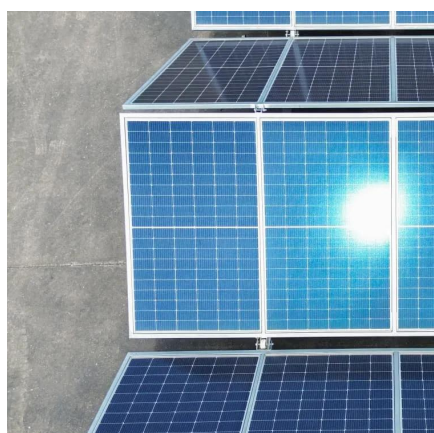
[Request Quote](#)



Base Stations

Power Amplifier: The RF signals are power amplified before transmission to their destinations for increased signal strength. Therefore, this is very important for enabling the ...

[Request Quote](#)



[Complete Guide to 5G Base Station](#)



[Construction](#)

Explore how 5G base stations are built--from site planning and cabinet installation to power systems and cooling solutions. Learn the ...

[Request Quote](#)





Contact Us

For catalog requests, pricing, or partnerships, please visit:

<https://www.energyinnovationday.pl>

Phone: +48 22 335 1273

Email: info@energyinnovationday.pl

Scan the QR code to contact us via WhatsApp.

