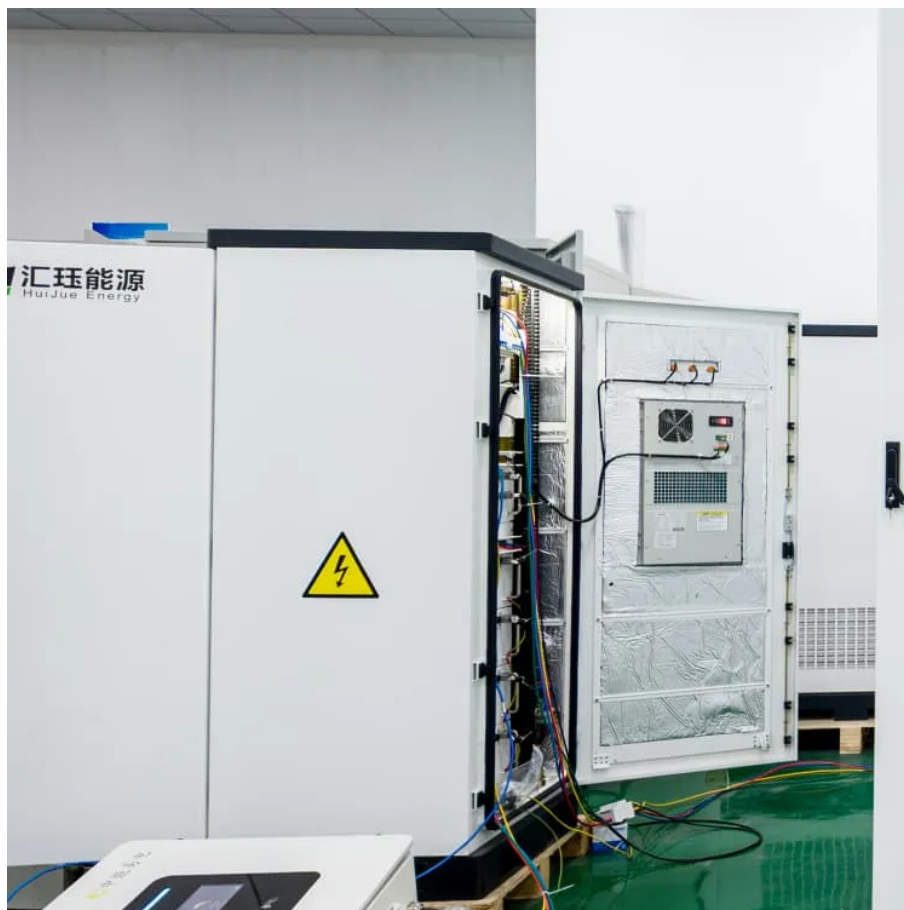




Do I need to turn on the inverter when charging the RV solar panels





Overview

Yes, you should turn off your RV inverter when plugged in. This helps to avoid unnecessary power consumption and potential wear on your inverter. Many RV owners wonder whether to keep their inverter on or off when connected to shore power.

Yes, you should turn off your RV inverter when plugged in. This helps to avoid unnecessary power consumption and potential wear on your inverter. Many RV owners wonder whether to keep their inverter on or off when connected to shore power.

Yes, you should turn off your RV inverter when plugged in. This helps to avoid unnecessary power consumption and potential wear on your inverter. Many RV owners wonder whether to keep their inverter on or off when connected to shore power. It's a common question with a simple answer, yet.

The solar panel provides a 12-volt charge to the house batteries through a controller. It does not provide any 120-volt power to the rig. You can only get 120-volt power through the inverter that takes 12-volt power from the house batteries and inverts it to 120-volt. If you are connected to.

Generally, RV inverters should be turned off when not in use to avoid unnecessary battery drain. However, whether an RV inverter should be left on or off when plugged in depends on several factors, primarily the type of inverter and the manufacturer's recommendations. In this comprehensive guide.

RV inverters are typically installed in the power distribution system of an RV to convert DC power (batteries, solar panels) to standard AC power for use by electrical appliances in the RV, such as TVs, microwaves, chargers, and so on. There are two common types of RV inverters: pure sine wave.

For starters, having your inverter on when plugged into shore power has your ac current ready should shore power suddenly cut out. On the other hand, keeping your inverter on when not needed will consume power and create some wear and tear to the life of your inverter. This post will review all the.

Except for the simplest needs, adding an inverter may require changes to your



RV's electrical system. This is especially true if you want to power multiple outlets or high-wattage appliances. In most cases, it's not what you would call a "plug 'n play" upgrade. How Does An RV Inverter Work?

An.



Do I need to turn on the inverter when charging the RV solar panels



[Should an RV Inverter Be Left On? Does it Hurt the Battery?](#)

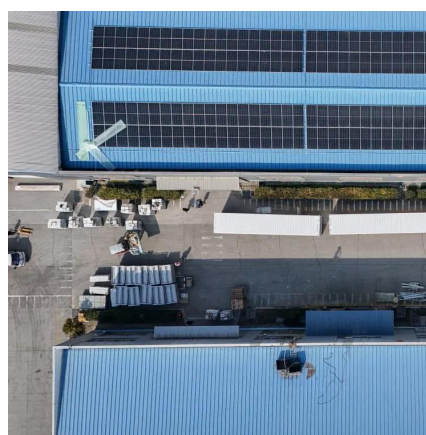
In short, an inverter is what allows you to plug AC devices into your RV. It does this by inverting the RV's incoming DC (direct current) current into an AC (alternating current) current. Related ...

[Request Quote](#)

[Should I switch off or leave on the RV inverter ...](#)

Caravan inverters should always be switched off when not in use, as even when not in use, caravan inverters can drain the battery, ...

[Request Quote](#)



[Should an RV Inverter Be Left On? Does it Hurt the ...](#)

In short, an inverter is what allows you to plug AC devices into your RV. It does this by inverting the RV's incoming DC (direct current) current into ...

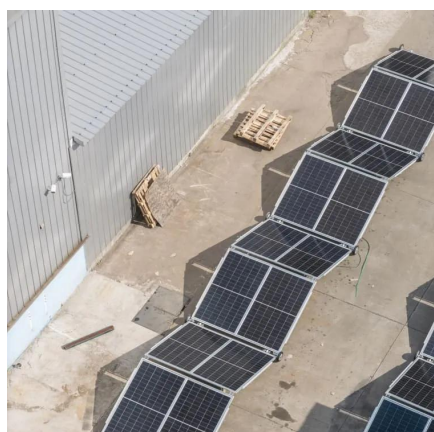
[Request Quote](#)



[Using Inverters With RV Solar: A Simple Guide for ...](#)

An inverter is needed if you want to use your RV's solar panels to power AC appliances and devices. Solar panels produce DC (direct current) power, ...

[Request Quote](#)



When using RV solar panel, should I turn off inverter when ...

When you are plugged into shoreline power, the batteries are being charged by the converter or inverter/charger, and the solar controller should shut off so it does not overcharge ...

[Request Quote](#)

The RV Inverter Used To Scare Me. Then I Found This Guide For ...

How do you choose the right inverter for your RV, and how do you install it? We consulted RV expert Gary Brinck on this topic to put together this concise guide for you.

[Request Quote](#)



Should I switch off or leave on the RV inverter when leaving?

Caravan inverters should always be switched off when not in use, as even when not in use, caravan inverters can drain the battery, resulting in reduced battery life. This is ...

[Request Quote](#)

[Should Inverter Be On When Plugged Into](#)



[Shore ...](#)

As your RV inverter is left on, it drains your battery like any other household appliance. This may not be a concern as your converter is working on ...

[Request Quote](#)



[When using RV solar panel, should I turn off ...](#)

When you are plugged into shoreline power, the batteries ...

[Request Quote](#)

[Should Inverter Be On When Plugged Into Shore Power?](#)

As your RV inverter is left on, it drains your battery like any other household appliance. This may not be a concern as your converter is working on charging the battery and providing that ...

[Request Quote](#)



The RV Inverter Used To Scare Me. Then I Found This Guide For Beginners

How do you choose the right inverter for your RV, and how do you install it? We consulted RV expert Gary Brinck on this ...

[Request Quote](#)

[Rv Inverter on Or off When Plugged in:](#)



Essential Guidelines

An RV inverter should be turned off when plugged into shore power to prevent battery drain and ensure safety. This helps avoid overheating and potential electrical issues.

[Request Quote](#)



THE RV SOLAR

If you use inadequate, thin-gauge wire for your system, those wires won't carry the full amount of power to your batteries or inverter, causing them to not run your appliances properly. This can ...

[Request Quote](#)

Should an RV Inverter Be Left on When Plugged ...

When boondocking and relying on solar to supply power to the RV, it is best to leave the inverter turned on 24/7. That way the solar ...

[Request Quote](#)



Using Inverters With RV Solar: A Simple Guide for using the ...

An inverter is needed if you want to use your RV's solar panels to power AC appliances and devices. Solar panels produce DC (direct current) power, and most household appliances ...

[Request Quote](#)

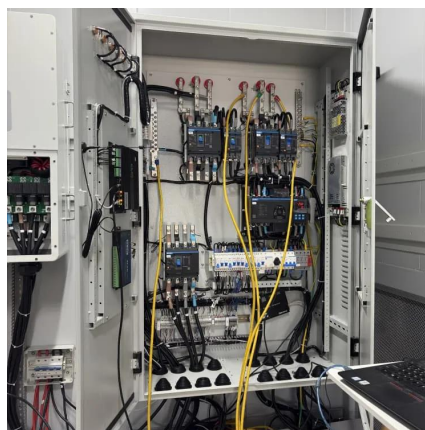
Should an RV Inverter Be Left on When



[Plugged In?](#)

When boondocking and relying on solar to supply power to the RV, it is best to leave the inverter turned on 24/7. That way the solar power seamlessly flows to the batteries ...

[Request Quote](#)



[Should an RV Inverter Be Left on All the Time?](#)

For most installations, an RV inverter should be turned off when not in use. This is because an inverter can drain power from batteries even when there is no power being used. Campers ...

[Request Quote](#)



Contact Us

For catalog requests, pricing, or partnerships, please visit:

<https://www.energyinnovationday.pl>

Phone: +48 22 335 1273

Email: info@energyinnovationday.pl

Scan the QR code to contact us via WhatsApp.

