



Direct-entry wind power generation system





Overview

These systems eliminate the need for gearboxes, which are traditionally used to convert wind turbine rotation into usable electrical energy. Instead, they directly connect the rotor to the generator, streamlining operations and enhancing reliability.

These systems eliminate the need for gearboxes, which are traditionally used to convert wind turbine rotation into usable electrical energy. Instead, they directly connect the rotor to the generator, streamlining operations and enhancing reliability.

Wind energy has become a cornerstone of renewable power generation worldwide. Among the various technologies, direct-drive wind power systems stand out for their efficiency and reduced maintenance needs. These systems eliminate the need for gearboxes, which are traditionally used to convert wind.

Abstract—This paper presents a large-scale multi-objective design optimization for a direct-drive wind turbine generator concept that is based upon an experimentally validated computational model for a small-scale prototype motor of the same type. By integrating an outer reluctance-type rotor and.

Direct-drive wind turbines use a system where the rotor is directly connected to the generator without the need for a gearbox. This setup eliminates the traditional gearbox that converts the rotor's low-speed rotation to the high-speed rotation required by the generator. As a result, direct-drive.

Wind power or wind energy is a form of renewable energy that harnesses the power of the wind to generate electricity. It involves using wind turbines to convert the turning motion of blades, pushed by moving air (kinetic energy) into electrical energy (electricity). Modern wind turbines are.

In the ever-evolving world of renewable energy, wind power stands out as one of the most promising options for sustainable electricity generation. Among the various types of wind turbines, direct-drive wind turbines have emerged as a cutting-edge technology that offers numerous advantages over.

.4 shows the double-fed wind power generation system. Both the stator and the



rotor of the double-fed generator can supply power to the grid, in which the rotator is connected to the grid through a converter, synchronous and PM generators is listed in Table 1. It can be seen that direct drive wind.



Direct-entry wind power generation system



Wind Energy , Department of Energy

Wind power or wind energy is a form of renewable energy that harnesses the power of the wind to generate electricity. It involves using ...

[Request Quote](#)

Control Study of Direct-Drive Permanent Magnet Synchronous Wind Power

Wind energy is the most promising renewable energy, and it plays a crucial role in sustainable development. This paper's research content is the converter contr.

[Request Quote](#)



[Principle of wind power direct drive power generation](#)

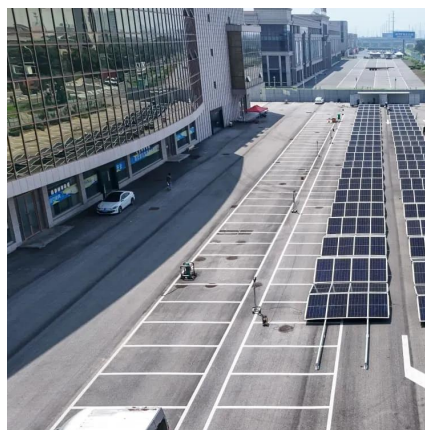
The combination of the fractional frequency transmission system (FFTS) and the direct-drive wind turbine generator will be beneficial to the development of the offshore wind

[Request Quote](#)

Wind power

Wind power is the use of wind energy to generate useful work. Historically, wind power was used by sails, windmills and windpumps, but today it is mostly used to generate electricity. This ...

[Request Quote](#)



Wind Energy , Department of Energy

Wind power or wind energy is a form of renewable energy that harnesses the power of the wind to generate electricity. It involves using wind turbines to convert the turning ...

[Request Quote](#)



[How do direct-drive wind turbines work?](#)

Direct-drive wind turbines provide a reliable, efficient, and low-maintenance solution for harnessing wind energy. By eliminating the ...

[Request Quote](#)



Control Study of Direct-Drive Permanent Magnet Synchronous ...

Wind energy is the most promising renewable energy, and it plays a crucial role in sustainable development. This paper's research content is the converter contr.

[Request Quote](#)



Wind power



Wind power is the use of wind energy to generate useful work. Historically, wind power was used by sails, windmills and windpumps, but today it is ...

[Request Quote](#)



[How Direct-Drive Wind Power Systems Works](#)

Among the various technologies, direct-drive wind power systems stand out for their efficiency and reduced maintenance needs. These systems eliminate the need for ...

[Request Quote](#)



[How do direct-drive wind turbines work?](#)

Direct-drive wind turbines provide a reliable, efficient, and low-maintenance solution for harnessing wind energy. By eliminating the gearbox and using permanent magnet ...

[Request Quote](#)



Design Optimization of a Direct-Drive Wind Generator with a ...

Abstract--This paper presents a large-scale multi-objective design optimization for a direct-drive wind turbine generator concept that is based upon an experimentally validated computational ...

[Request Quote](#)



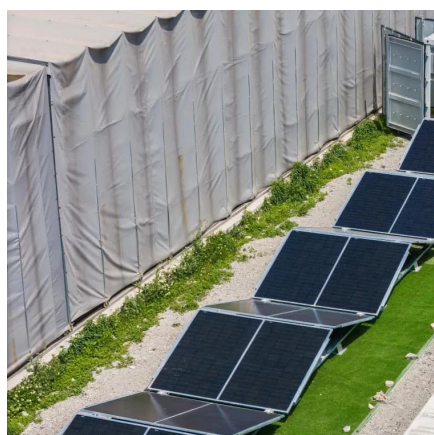
[Direct Drive Wind Turbine vs. Geared](#)



[Drive Wind Turbine](#)

In the direct-drive generator for wind turbine, the rotor is directly connected to the rotor hub. Direct-drive generators operate at the same speed as the turbine's blades and must therefore ...

[Request Quote](#)



Generator design for direct-drive turbines , Wind Turbine System ...

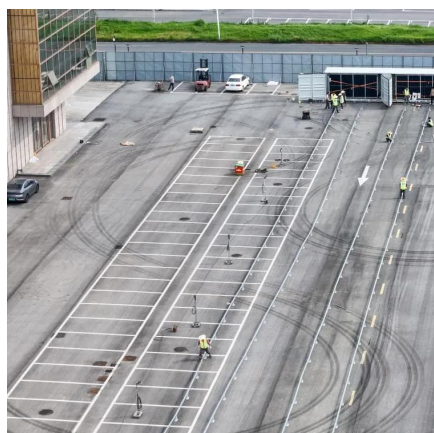
The following chapter about direct-drive generator systems for wind turbine applications deals with the main aspects which determine the design of such generators, ...

[Request Quote](#)

[Direct Drive Wind Turbine vs. Geared Drive Wind ...](#)

In the direct-drive generator for wind turbine, the rotor is directly connected to the rotor hub. Direct-drive generators operate at the same speed as the ...

[Request Quote](#)



[What Is a Direct-Drive Wind Turbine?](#)

Direct-drive wind turbines represent a significant leap forward in the quest for more efficient and reliable wind energy solutions. By simplifying the mechanics and enhancing ...

[Request Quote](#)



Contact Us

For catalog requests, pricing, or partnerships, please visit:

<https://www.energyinnovationday.pl>

Phone: +48 22 335 1273

Email: info@energyinnovationday.pl

Scan the QR code to contact us via WhatsApp.

