



# Dimensions of solar panel array





## Overview

---

The standard residential solar photovoltaic panel size you'll see most often is based on a 60-cell configuration, typically measuring about 67 inches long by 40 inches wide. This size offers the best balance between power output, handling ease, and fitting standard roof dimensions.

The standard residential solar photovoltaic panel size you'll see most often is based on a 60-cell configuration, typically measuring about 67 inches long by 40 inches wide. This size offers the best balance between power output, handling ease, and fitting standard roof dimensions.

**Panel "Size" vs Physical Dimensions:** The most critical distinction for homeowners is that solar panel "size" refers to electrical output (measured in watts), not physical measurements. A 400W panel has the same physical footprint whether it produces 350W or 450W – the difference lies in cell.

Sizing your solar panel array is one of the most important steps in designing a reliable and efficient off-grid solar power system. Whether you're powering a home, cabin, RV, or mobile business, the right solar array ensures you produce enough energy to meet your needs—without overspending on.

This information is vital for anyone beginning the process of installing a residential solar array, as the size of the panels directly impacts the design and total capacity of the system. The majority of solar modules installed on residential properties adhere to a relatively standard set of.

Choosing the right solar panel size can feel like a puzzle, as it is a key part of how solar energy works. Roof shapes, power goals, and budget lines all shift the pieces. Yet a few clear numbers turn that puzzle into a simple plan. This guide puts those numbers front and center, from the standard.

But before you can finalize your solar array design, there is one crucial, often confusing element to master: understanding solar photovoltaic panel sizes. For the uninitiated, the world of solar dimensions can seem like a wild west of metrics—every manufacturer has a different name, a different.

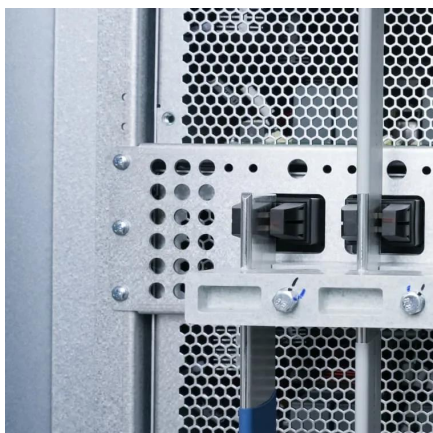
Whenever you want to find out what the standard solar panel sizes and wattages



are, you encounter a big problem: There is no standardized chart that will tell you, for example, “A typical 300-watt solar panel is this long and this wide.” If you want to calculate how many solar panels you can put on.



## Dimensions of solar panel array



### [How Big Are Solar Panels? Typical Dimensions Explained](#)

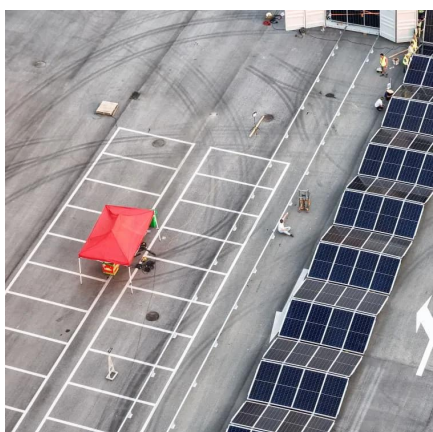
Most modern residential panels, often referred to as 60-cell modules, measure approximately 5.5 feet long by 3.25 feet wide (66 inches by 39 inches or 1.68 meters by 0.99 meters).

[Request Quote](#)

### [Solar Panel Size Guide , Best Panel Size for Your ...](#)

Learn how to choose the ideal solar panel size for your home. Get expert tips, standard dimensions, and a size chart to simplify your ...

[Request Quote](#)



### [Solar Panel Array Size Calculator - self2solar](#)

Quickly determine your solar panel array size: enter daily kWh, panel wattage, and sunlight hours to get a precise estimate of your system size.

[Request Quote](#)

### [Solar Panel Size Guide , Best Panel Size for Your Roof](#)

Learn how to choose the ideal solar panel size for your home. Get expert tips, standard dimensions, and a size chart to simplify your solar decisions.

[Request Quote](#)



### [How to Size a Solar Panel Array For A Solar Power System](#)

Sizing your solar panel array doesn't have to be complicated. With a few key data points, and the right tools, you can confidently build a system that meets your needs--day after day, season ...

[Request Quote](#)



### [Solar Panel Size Guide: Find The Right Fit For Your Needs](#)

Explore solar panel sizes for residential, commercial, and utility projects. Get insights on dimensions, weight, and tips to estimate your project's footprint.

[Request Quote](#)



### [Solar Panel Size & Dimensions Guide 2025 . Complete Specs](#)

Complete guide to solar panel sizes and dimensions. Compare 60-cell vs 72-cell panels, weights, roof space requirements, and installation specs for 2025.

[Request Quote](#)



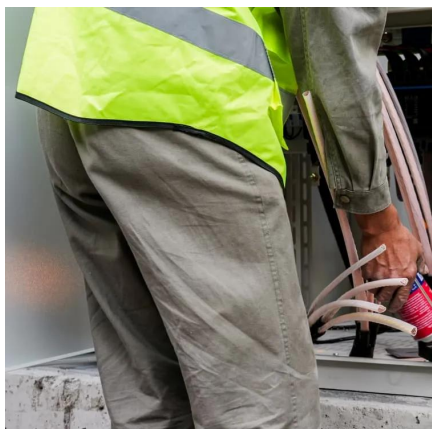
### [Standard Solar Panel Sizes And Wattages](#)



## [\(100W ...](#)

To bridge that gap of very useful knowledge needed, we have compared and averaged the sizes of 100-watt to 500-watt solar panels available on the ...

[Request Quote](#)



## [How to Size a Solar System \[Step-by-Step Guide\]](#)

Learn how to size a solar system for your home. Here's our step-by-step guide on sizing a solar system that meets your energy needs.

[Request Quote](#)

## The Solar Lab

When it comes to sizing a solar power system, there are three main things that you need to look at - sizing your battery, inverter, and your solar panels.

[Request Quote](#)



## [standard solar photovoltaic panel sizes explained](#)

We will explore the common dimensions, explain how cell count dictates physical size, and provide actionable insights so you can accurately plan your installation, maximize ...

[Request Quote](#)

## Standard Solar Panel Sizes And



## Wattages (100W-500W Dimensions)

To bridge that gap of very useful knowledge needed, we have compared and averaged the sizes of 100-watt to 500-watt solar panels available on the market. The goal here is to get to the ...

[Request Quote](#)





## Contact Us

---

For catalog requests, pricing, or partnerships, please visit:

<https://www.energyinnovationday.pl>

Phone: +48 22 335 1273

Email: [info@energyinnovationday.pl](mailto:info@energyinnovationday.pl)

Scan the QR code to contact us via WhatsApp.

