



# Dimensions of battery cabinet b16





## Overview

---

at. The front cover features a CAT 30 keyed door lock and lift-away hinge. Overall dimensions measure 22" wide y 10" high by 8.5" deep or 30" wide by 10" high by 8.5" deep or. Four 0.5" and 0.75" EMT conduit knockouts are included on the top and sides of the enclosure. The batte.

at. The front cover features a CAT 30 keyed door lock and lift-away hinge. Overall dimensions measure 22" wide y 10" high by 8.5" deep or 30" wide by 10" high by 8.5" deep or. Four 0.5" and 0.75" EMT conduit knockouts are included on the top and sides of the enclosure. The batte.

This manual contains proprietary and confidential information of C&C Power, Inc., and has been prepared for the use of Mitsubishi Electric Power Products, Inc., for use in conjunction with equipment provided by C&C Power, Inc. unauthorized reproduction, in whole or in part, without written.

This page contains technical data sheet, documents library and links to offering related to this product. If you require any other information, please contact us using form located at the bottom of the page. Print. Print to Pdf. Smarter City (Innovation Magazine) Summary: Das Thema.

The Battery Cabinet Size 16 is designed for safe and organized storage of UPS batteries. It provides secure housing, proper ventilation, and easy cable management to protect your power system and extend battery lifespan. Ideal for homes, offices, server rooms, and industrial setups. Durable Battery.

tery Capacit r Switch and Fuses. Ba gns without notice. All illustrations, descriptions, dimensions and weights in this catalogue are for guidance and cannot be held bin .

This manual contains important information that is needed during the installation and maintenance of the system. 1.1 M ANUAL YMBOLS Warning: Indicates information provided to protect the user against personal injury and/or safety hazards. BC16 B ATTERY ABINET 2. I NTRODUCTION The C&C Power family.

ed with a complete interior and exterior durable red or black powder c at. The front cover features a CAT 30 keyed door lock and lift-away hinge. Overall dimensions



measure 22" wide y 10" high by 8.5" deep or 30" wide by 10" high by 8.5" deep or. Four 0.5" and 0.75" EMT conduit knockouts are.



## Dimensions of battery cabinet b16



### Battery Cabinet B16

The Battery Cabinet Size 16 is designed for safe and organized storage of UPS batteries. It provides secure housing, proper ventilation, and easy cable management to protect your ...

[Request Quote](#)

### [Mitsubishi Electric BC16 Installation, Operation](#)

BC16 BATTERY CABINET 6.4 G GENERAL SPECIFICATIONS Cabinet Size: 19.70"W x 26.75"D x 55.12"H Empty Cabinet Weight: 375 lbs (approximately) Operating Temperature: 20°C to 25°F ...

[Request Quote](#)



### [BESS Commercial Energy Storage Cabinet](#)

...

Outdoor Lithium ion Battery Enclosure mainly provides a stable working temperature and dust-free environment for lithium battery, they are ...

[Request Quote](#)

### [BESS Commercial Energy Storage Cabinet System, AZE](#)

Outdoor Lithium ion Battery Enclosure mainly provides a stable working temperature and dust-free environment for lithium battery, they are integrated with thermal insulation and equipped ...



[Request Quote](#)



### [Modular Battery Cabinet Specifications](#)

NOTE: Clearance dimensions are published for airflow and service access only. Consult with the local safety codes and standards for additional requirements in your local area.

[Request Quote](#)



### **Battery cabinet UPS**

The battery cabinets are available in 5 different mechanical dimensions, are able to contain various combination of Batteries, up to maximum 63 blocks, connected in series and parallel, ...

[Request Quote](#)



### [SPECIFICATIONS FEATURES The BCA Battery Cabinet is ...](#)

With the ability to be securely wall mounted, these cabinets allow easy access to your batteries for quick maintenance while reducing the risk of unnecessary power drain, interference or ...

[Request Quote](#)



### [Battery Cabinet Dimensions Guide .](#)



## [Huijue Group E-Site](#)

Specifying 823mm cabinet depth (versus standard 600mm) with rotating busbar assemblies. Result: 29% faster deployment with 18-year lifecycle assurance. Emerging phase ...

[Request Quote](#)



### **B16 , ABB**

B16 ComfortLine B Wall-mounting cabinet, Surface mounted/recessed mounted/partially recessed mounted, 72 SU, Grounded (Class I), IP44, ...

[Request Quote](#)



## **Microsoft Word**

The BC16 battery cabinet is equipped with four casters, two swivel types in front and two rigid types in the back. Move the cabinet into the desired location and lock the front casters.

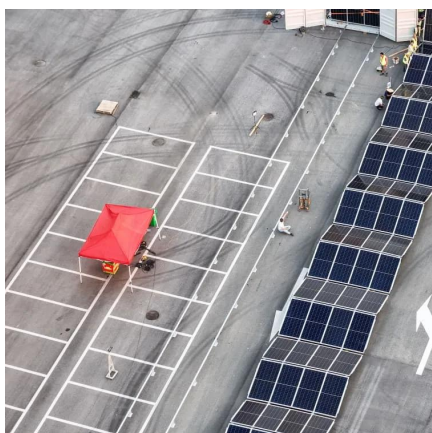
[Request Quote](#)



### **B16 , ABB**

B16 ComfortLine B Wall-mounting cabinet, Surface mounted/recessed mounted/partially recessed mounted, 72 SU, Grounded (Class I), IP44, Field Width: 1, Rows: 6, 950 mm x 300 mm x 215 mm

[Request Quote](#)



## [Kabinet Baterai UPS Battery Cabinet B16](#)



Kabinet Baterai UPS B16 Description Specification  
Spesifikasi - Dimension (WxDxH) (mm):  
470×800×617 - Material: SPHC 2mm - Finishing:  
Powder Coating Dimensi Baterai - ...

[Request Quote](#)





## Contact Us

---

For catalog requests, pricing, or partnerships, please visit:

<https://www.energyinnovationday.pl>

Phone: +48 22 335 1273

Email: [info@energyinnovationday.pl](mailto:info@energyinnovationday.pl)

Scan the QR code to contact us via WhatsApp.

