



Conventional solar container battery discharge depth





Overview

The depth of discharge is a percentage of the electrical energy that can be withdrawn from the battery relative to the total battery capacity. For example, if you discharge 8 kWh from a solar battery with a 10 kWh capacity, the battery's depth of discharge would be 80% (8 kWh / 10).

The depth of discharge is a percentage of the electrical energy that can be withdrawn from the battery relative to the total battery capacity. For example, if you discharge 8 kWh from a solar battery with a 10 kWh capacity, the battery's depth of discharge would be 80% (8 kWh / 10).

In simple terms the depth a battery is discharged is the percentage a battery has been emptied to its total capacity. The DoD is usually referred to in a percent, so a battery that has had a DoD of 100% means it has discharged to its full capacity. For example, if a 15-kWh battery was fully charged.

Depth of Discharge (DoD) is a percentage that indicates how much of a battery's total stored energy has been used. It's the opposite of the State of Charge (SoC). If your battery is fully charged, its SoC is 100% and its DoD is 0%. If you've used half its capacity, the SoC is 50% and the DoD is.

One of the most important – yet often overlooked – terms in solar battery performance is Depth of Discharge, commonly referred to as DoD. Understanding this metric can help you maximise the lifespan, efficiency, and value of your solar battery investment. What Is Depth of Discharge (DoD)?

Depth of.

Understanding what depth of discharge (DoD) means for your solar batteries is essential for anyone looking to maximize the efficiency and sustainability of their renewable energy system. DoD refers to how much a battery has left compared to its capacity. Different battery chemistries have varying.

One critical factor is solar batteries' depth of discharge (DoD). In this article, we will explore the significance of DoD in solar battery systems, its impact on battery performance and cycle life, and strategies to maximize the lifespan and efficiency of your solar battery storage. Depth of.



For a deeper look into this metric, especially for common system configurations, you can review [The Ultimate Guide to 12V LiFePO4 Battery Cycle Life](#). Depth of Discharge is the percentage of the battery's total capacity that has been used. If you have a 10 kWh battery and you use 8 kWh of energy.



Conventional solar container battery discharge depth



[Understanding Solar Battery Depth of Discharge ...](#)

To calculate the depth of discharge for your solar battery, you need to determine the energy consumed or discharged from the battery in ...

[Request Quote](#)

[What is Depth of Discharge for Solar Batteries?](#)

Understanding what depth of discharge (DoD) means for your solar batteries is essential for anyone looking to maximize the efficiency ...

[Request Quote](#)



[Understanding Solar Battery Depth of Discharge \(DoD\)](#)

To calculate the depth of discharge for your solar battery, you need to determine the energy consumed or discharged from the battery in kilowatt-hours (kWh). This can be achieved by ...

[Request Quote](#)



Depth of Discharge (DoD) and Its Impact on Solar Battery Efficiency

Depth of Discharge (DoD) is one of the most critical factors when choosing a solar battery. It directly impacts the battery's performance, efficiency, and lifespan. But what does ...



[Request Quote](#)



[Solar Battery Depth Of Discharge: How It Impacts Cycle Life](#)

In this guide, we'll dive deep into what Depth of Discharge really means, why it's the single biggest influencer of cycle life, and how modern technology, particularly the lifepo4 ...

[Request Quote](#)

[What is depth of discharge? , EnergySage](#)

Many batteries today feature depths of discharge, or DODs, of 100%, meaning it's OK to use the battery's entire energy capacity -- but not all do. Let's dive deeper into what ...

[Request Quote](#)



[Why Depth of Discharge \(DoD\) Matters in Solar ...](#)

Understanding the Depth of Discharge (DoD) is crucial for anyone investing in a solar battery storage system. It directly influences ...

[Request Quote](#)

[Understanding Depth of Discharge \(DoD\)](#)



[in Solar ...](#)

Depth of Discharge refers to the percentage of a battery's total capacity that has been used. For example, if you have a 10kWh solar ...

[Request Quote](#)



[What is Depth of Discharge for Solar Batteries?](#)

Understanding what depth of discharge (DoD) means for your solar batteries is essential for anyone looking to maximize the efficiency and sustainability of their renewable ...

[Request Quote](#)

[What is depth of discharge? , EnergySage](#)

Many batteries today feature depths of discharge, or DODs, of 100%, meaning it's OK to use the battery's entire energy capacity -- but ...

[Request Quote](#)



[Understanding Solar Battery Depth of Discharge](#)

The depth of discharge is a percentage of the electrical energy that can be withdrawn from the battery relative to the total battery capacity. For example, if you discharge ...

[Request Quote](#)

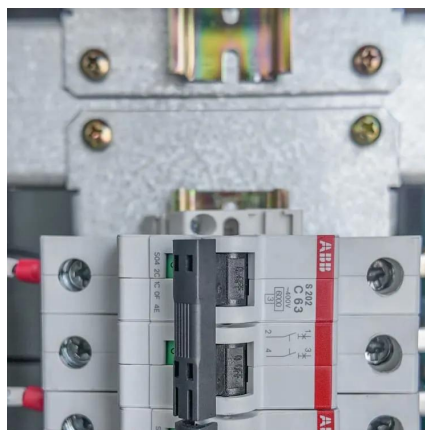
[Depth of Discharge \(DoD\) and Its Impact](#)



[on Solar ...](#)

Depth of Discharge (DoD) is one of the most critical factors when choosing a solar battery. It directly impacts the battery's ...

[Request Quote](#)



[Understanding Solar Battery Depth of Discharge](#)

The depth of discharge is a percentage of the electrical energy that can be withdrawn from the battery relative to the total battery ...

[Request Quote](#)

[What is the depth of discharge of a solar battery?](#)

Defining Depth of Discharge The depth of discharge refers to the percentage of a battery's capacity that has been used relative to its total capacity. For instance, if a solar ...

[Request Quote](#)



Why Depth of Discharge (DoD) Matters in Solar Battery Storage ...

Understanding the Depth of Discharge (DoD) is crucial for anyone investing in a solar battery storage system. It directly influences the performance, efficiency, lifespan, and ...

[Request Quote](#)

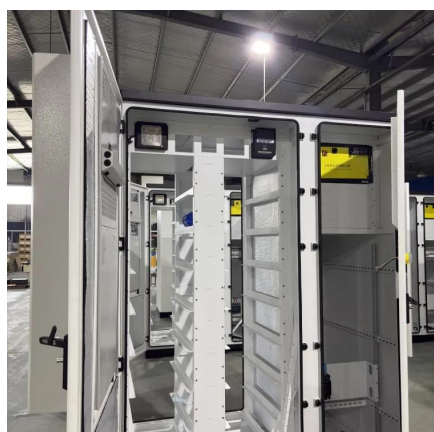
[Understanding Cycle Life vs. Depth of](#)



[Discharge: A ...](#)

A detailed analysis of battery cycle life and depth of discharge (DoD). This guide explains their relationship, impact on LiFePO4 performance, and strategies for extending ...

[Request Quote](#)



[Understanding Depth of Discharge \(DoD\) in Solar Batteries](#)

Depth of Discharge refers to the percentage of a battery's total capacity that has been used. For example, if you have a 10kWh solar battery and you've used 5kWh of its ...

[Request Quote](#)



Contact Us

For catalog requests, pricing, or partnerships, please visit:

<https://www.energyinnovationday.pl>

Phone: +48 22 335 1273

Email: info@energyinnovationday.pl

Scan the QR code to contact us via WhatsApp.

