



Conditions for DC Trading of Photovoltaic Folding Containers for Wastewater Treatment Plants





Overview

AECOM determined that physical constraints and buildable areas provided a maximum installed direct current (DC) capacity of 13.27 megawatts (MW) of canopy style solar PV arrays, an example of which can be seen in Figure 6, coupled with a smaller amount of more common rooftop arrays.

AECOM determined that physical constraints and buildable areas provided a maximum installed direct current (DC) capacity of 13.27 megawatts (MW) of canopy style solar PV arrays, an example of which can be seen in Figure 6, coupled with a smaller amount of more common rooftop arrays.

DC Water owns and operates The Blue Plains Advanced Wastewater Treatment Plant (AWTP) located in Southwest Washington, DC. As an environmental steward, DC Water is actively pursuing ways to offset the AWTP's operating costs through the strategic implementation of green technologies such as.

The ClearFox® Containerized System is a packaged wastewater treatment plant, custom designed and pre-installed within ISO shipping containers. As a modular solution, it is easily transportable by land or sea, with minimal onsite installation required. A complete range of process steps including.

DC Water treats wastewater from the District of Columbia, Maryland and Virginia at the largest treatment plant of its kind in the world. On an average day, close to 300 million gallons of raw sewage flows into the Blue Plains Advanced Wastewater Treatment Plant to be treated. After treatment, the.

EPA is planning to propose new rules to improve the management and recycling of end-of-life solar panels and lithium batteries. EPA is working on a proposal to add hazardous waste solar panels to the universal waste regulations found at Title 40 of the Code of Federal Regulations Part 273 To view.

LZY's photovoltaic power plant is designed to maximize ease of operation. It not only transports the PV equipment, but can also be deployed on site. It is based on a 10 - 40 foot shipping container. Efficient hydraulics help get the solar panels ready quickly. Due to its construction, our solar.

In metropolitan Washington, there are over 37 different municipal wastewater



treatment plants (WWTPs) serving the wastewater needs of the region with a combined treatment capacity of over 780 million gallons per day (mgd). Overall, approximately 90 percent of the region's population are served by. What happens to DC Water after treatment?

After treatment, the cleaned water flows into the Potomac River which leads to the Chesapeake Bay. To protect our waterways, DC Water is under strict requirements to dramatically reduce the amount of nitrogen and phosphorous in the cleaned water we discharge into the Potomac. In fact, our permit limits are some of the most stringent in the country.

What is a clearfox® containerized wastewater treatment plant?

ClearFox® containerized wastewater treatment plants offer a highly cost-efficient solution with low capital and operating expenses, as they require no extensive planning, civil works or permanent buildings. The system only needs to be placed on a solid base and connected.

How does LZY's photovoltaic power plant work?

LZY's photovoltaic power plant is designed to maximize ease of operation. It not only transports the PV equipment, but can also be deployed on site. It is based on a 10 - 40 foot shipping container. Efficient hydraulics help get the solar panels ready quickly.

Are clearfox® containerized systems effective in emergency situations?

Yes, ClearFox® containerized systems are effective solutions for water and wastewater treatment in emergency situations. Their rapid deployment capability and flexibility make them ideal for disaster relief scenarios, such as emergency shelters or field hospitals, ensuring the provision of safe and clean water.



Conditions for DC Trading of Photovoltaic Folding Containers for Wastewater Treatment



[Solar System on Wastewater Treatment Plant](#)

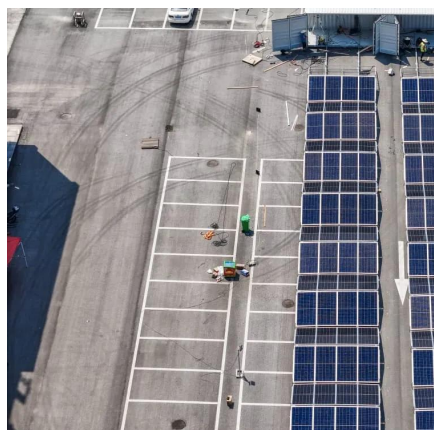
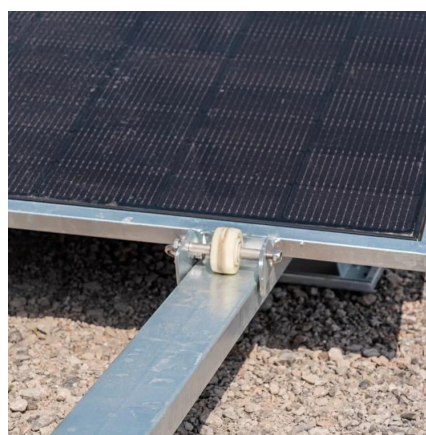
The solar system in a wastewater treatment plant can be installed in several locations, depending on the specific system being ...

[Request Quote](#)

Regional Wastewater

The result of all of those treatment process improvements directly led to the significant water quality improvements seen in the upper, tidal portions of the Potomac River. Those ...

[Request Quote](#)



[Mobile Solar Container Systems , Foldable PV ...](#)

LZY Solar Containers use proprietary folding panel technology to maximize power generation while maintaining standard shipping dimensions. Our ...

[Request Quote](#)

[Solar container Mobil-Grid® 500+ solarfold](#)

Mobil-Grid® 500+ solarfold is a 20 Feet ISO High Cube container, with CSC certification, which integrates a plug and play pre-wired deployable and ...



[Request Quote](#)



[DC Water Blue Plains Advanced Waste Water Treatment Plant](#)

The following Technical Memorandum prepared by AECOM was commissioned by the District of Columbia Water and Sewer Authority (DC Water) to evaluate the feasibility of locating a solar ...

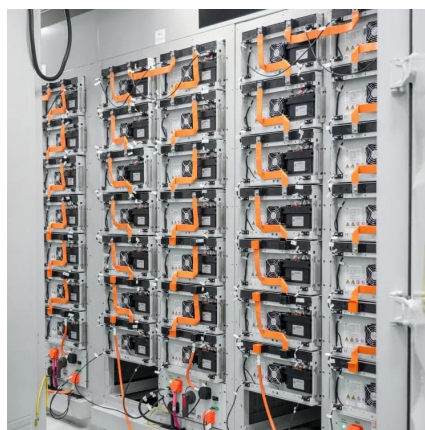
[Request Quote](#)



[SolarEdge Helps Keep Water District Afloat](#)

After issuing an RFP and reviewing the bids, Lake County Special Districts concluded that the unused wastewater treatment pond provided an incredible opportunity, and a large enough ...

[Request Quote](#)



PROJECT: ADDRESS: SUBMITTED BY:

DC Water is in the process of selecting a team who will design, build, own, operate, and maintain the solar power system for 15 years. Four teams have been prequalified and proposers will ...

[Request Quote](#)



[The Next Generation of Wastewater](#)



[Treatment , DC Water](#)

To protect our waterways, DC Water is under strict requirements to dramatically reduce the amount of nitrogen and phosphorous in the cleaned water we discharge into the Potomac. In ...

[Request Quote](#)



Mobile Solar Container Systems , Foldable PV Panels , LZY Container

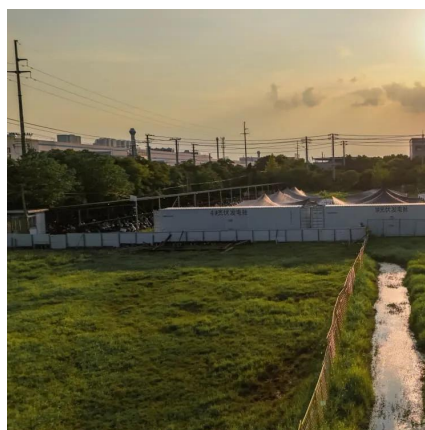
LZY Solar Containers use proprietary folding panel technology to maximize power generation while maintaining standard shipping dimensions. Our systems are faster to deploy, generate ...

[Request Quote](#)

[Improving Recycling and Management of Renewable Energy ...](#)

EPA is planning to propose new rules to improve the management and recycling of end-of-life solar panels and lithium batteries.

[Request Quote](#)



[Improving Recycling and Management of ...](#)

EPA is planning to propose new rules to improve the management and recycling of end-of-life solar panels and lithium batteries.

[Request Quote](#)

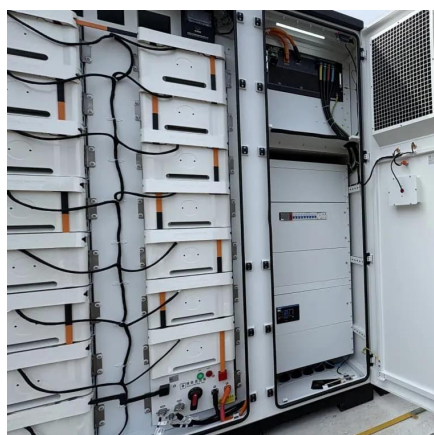
[Solar container Mobil-Grid® 500+](#)



[solarfold](#)

Mobil-Grid® 500+ solarfold is a 20 Feet ISO High Cube container, with CSC certification, which integrates a plug and play pre-wired deployable and redeployable solar plant

[Request Quote](#)



ClearFox® Containerized Systems

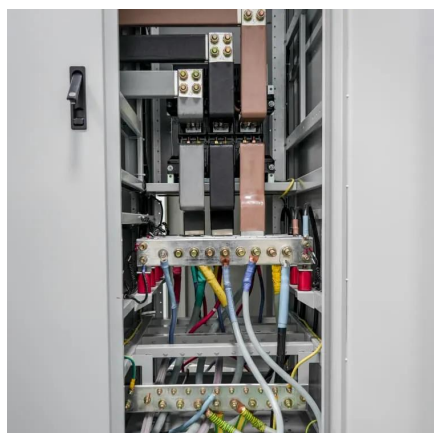
Our portable wastewater treatment systems are engineered for maximum performance in every climate zone. We have successfully installed systems in over a hundred countries, from the ...

[Request Quote](#)

ClearFox® Containerized Systems

Our portable wastewater treatment systems are engineered for maximum performance in every climate zone. We have successfully installed ...

[Request Quote](#)



[Solar System on Wastewater Treatment Plant](#)

The solar system in a wastewater treatment plant can be installed in several locations, depending on the specific system being used and the needs of the treatment plant.

[Request Quote](#)



Contact Us

For catalog requests, pricing, or partnerships, please visit:

<https://www.energyinnovationday.pl>

Phone: +48 22 335 1273

Email: info@energyinnovationday.pl

Scan the QR code to contact us via WhatsApp.

