



Communication nodes and base stations





Communication nodes and base stations



What Is A Base Station?

In summary, the base station is the active component responsible for network communication, while the tower is the physical ...

[Request Quote](#)

Chapter 2: Architecture

To further confuse matters, 3GPP terminology often changes with each generation (e.g., a base station is called eNB in 4G and gNB in 5G). We address situations like this by using generic ...

[Request Quote](#)



5G Base Station Architecture

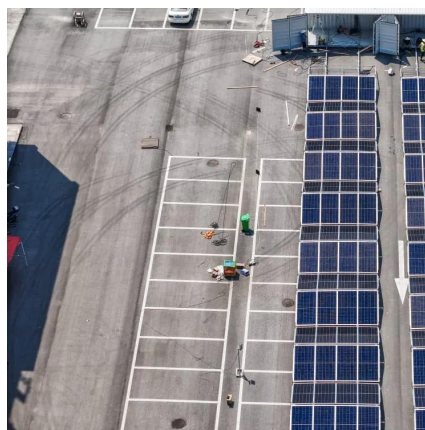
Uncover the intricate world of 5G Base Station Architecture, from gNode B to NGAP signaling. Dive into flexible network deployment ...

[Request Quote](#)

Base Stations

The present-day tele-space is incomplete without the base stations as these constitute an important part of the modern-day scheme of wireless communications. They are ...

[Request Quote](#)



Base Stations

The present-day tele-space is incomplete without the base stations as these constitute an important part of the modern-day scheme ...

[Request Quote](#)

Base station

In radio communications, a base station is a wireless communications station installed at a fixed location and used to communicate as part of one of the following: a push-to-talk two-way radio ...

[Request Quote](#)



Base Stations and Cell Towers: The Pillars of Mobile Connectivity

Base stations and cell towers are critical components of cellular communication systems, serving as the infrastructure that supports seamless mobile connectivity.

[Request Quote](#)

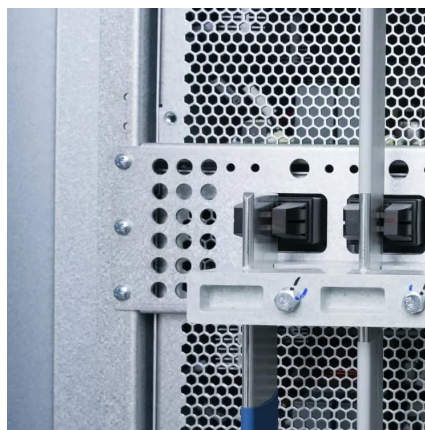
[5G NR Network Interfaces: Xn, NG, E1, F1.](#)



[F2 Explained](#)

We'll explore the Xn, NG, E1, F1, and F2 interfaces, highlighting their functions and locations within the 5G RAN and 5GC. Our information is based on the 3GPP TS 38.300 specification. ...

[Request Quote](#)



[Cellular Networks, Cells, and Base Stations -- EITC](#)

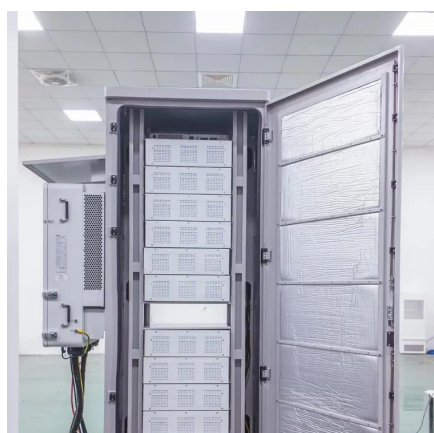
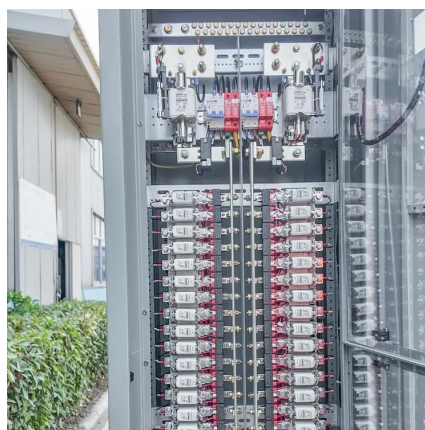
A cell site (or cell tower, or cellular base station) is a cellular-enabled mobile device site where antennae and electronic communications equipment are placed - typically ...

[Request Quote](#)

Chapter 2: Architecture

To further confuse matters, 3GPP terminology often changes with each generation (e.g., a base station is called eNB in 4G and gNB in 5G). We ...

[Request Quote](#)



Chapter 3: Basic Architecture

First, each base station establishes the wireless channel for a subscriber's UE upon power-up or upon handover when the UE is active. This channel ...

[Request Quote](#)

[5G NR Network Interfaces: Xn, NG, E1, F1.](#)



[F2 ...](#)

We'll explore the Xn, NG, E1, F1, and F2 interfaces, highlighting their functions and locations within the 5G RAN and 5GC. Our information is ...

[Request Quote](#)



[What are Base Station in Telecommunications?](#)

Base stations contain several key parts. The antenna sends and receives radio energy. The transceiver handles signal modulation. The baseband processor converts signals to digital ...

[Request Quote](#)

What Is A Base Station?

In summary, the base station is the active component responsible for network communication, while the tower is the physical structure that supports the base station.

[Request Quote](#)



5G Base Station Architecture

Uncover the intricate world of 5G Base Station Architecture, from gNode B to NGAP signaling. Dive into flexible network deployment options.

[Request Quote](#)

Chapter 3: Basic Architecture



First, each base station establishes the wireless channel for a subscriber's UE upon power-up or upon handover when the UE is active. This channel is released when the UE remains idle for a ...

[Request Quote](#)





Contact Us

For catalog requests, pricing, or partnerships, please visit:

<https://www.energyinnovationday.pl>

Phone: +48 22 335 1273

Email: info@energyinnovationday.pl

Scan the QR code to contact us via WhatsApp.

