



Communication indicators of the base station where the terminal is located





Overview

In communications, a base station is a communications station installed at a fixed location and used to communicate as part of one of the following: • a system, or; • a system such as or .

TL;DR: In this article, the first indication information is used for indicating the terminal device to carry out uplink transmission through adoption of configured at least one resource, where the at least resource comprises the resource different from that currently employed.

TL;DR: In this article, the first indication information is used for indicating the terminal device to carry out uplink transmission through adoption of configured at least one resource, where the at least resource comprises the resource different from that currently employed.

A base station represents an access point for a wireless device to communicate within its coverage area. It usually connects the device to other networks or devices through a dedicated high bandwidth wire of fiber optic connection. Base stations typically have a transceiver, capable of sending and.

A base station, often housed within a cell site, is the central point in a cellular network where signals are transmitted and received from mobile devices. It consists of electronic equipment, including transceivers, antennas, and signal processors, that manage the communication within a specific.

Base station (or base radio station, BS) is - according to the International Telecommunication Union 's (ITU) Radio Regulations (RR) [1] - a " land station in the land mobile service." A base station is called node B in 3G, eNB in LTE (4G), and gNB in 5G. The term is used in the context of mobile.

TL;DR: In this article, the first indication information is used for indicating the terminal device to carry out uplink transmission through adoption of configured at least one resource, where the at least resource comprises the resource different from that currently employed by the terminal.

The location of base stations (BS) and the allocation of channels are of paramount importance for the performance of cellular radio networks. Also cellular service providers are now being driven by the goal to enhance performance, particularly as it relates to the receipt and transmission of.



A base station, also known as a cell site or cell tower, is used for wireless communication. It is a fixed location equipped with antennas and other equipment that receives and transmits radio signals to and from mobile devices, such as smartphones, tablets, and other wireless devices. Base.



Communication indicators of the base station where the terminal is located



[What is Communication? Verbal, Non-Verbal & Written](#)

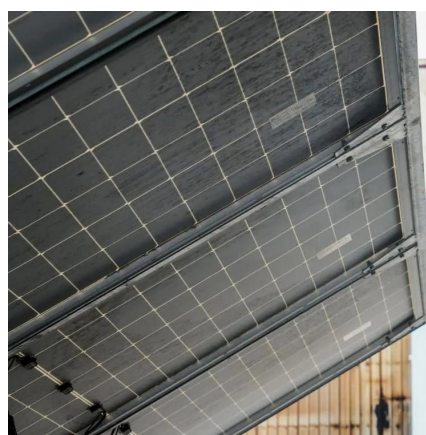
Communication is simply the act of transferring information from one place, person or group to another. Every communication involves (at least) one sender, a message and a recipient.

[Request Quote](#)

COMMUNICATION , English meaning

COMMUNICATION definition: 1. the act of communicating with people: 2. a message, letter, or announcement: 3. the various.... Learn more.

[Request Quote](#)



[What Is Communication? How to Use It Effectively](#)

Communication is sharing messages through words, signs, and more to create and exchange meaning. Feedback is a key part of communication, and can be given through ...

[Request Quote](#)

[Understanding Base Stations in Mobile ...](#)

Effective communication about the benefits of base stations can help improve community relations and address aesthetic concerns. In summary, ...

[Request Quote](#)



Base Transceiver Station

A base transceiver station (BTS) is defined as a network component that serves one cell within a base station system, which is part of a hierarchical structure for communicating with mobile ...

[Request Quote](#)



Communication , Definition, Types, Examples, & Facts , Britannica

Communication, the exchange of meanings between individuals through a common system of symbols. This article treats the functions, types, and psychology of ...

[Request Quote](#)



[Communication: Definition, Meaning, and Examples](#)

The term "communication" refers to the process of exchanging information, ideas, and emotions between individuals or groups through various means, such as verbal, non ...

[Request Quote](#)



What Is A Base Station?



Base stations are an essential component of cellular networks, providing coverage and connectivity to mobile devices within a ...

[Request Quote](#)



[8 Ways You Can Improve Your Communication Skills](#)

Effective communication is a critical skill for all leaders. These 8 tips can help improve your communication habits in the workplace.

[Request Quote](#)



[Understanding Base Stations: The Backbone of Wireless ...](#)

In cellular networks, a base station typically consists of antennas, a transmitter/receiver system, and a base station controller (BSC). The base station is ...

[Request Quote](#)



Base Stations

The present-day tele-space is incomplete without the base stations as these constitute an important part of the modern-day scheme of wireless communications. They are ...

[Request Quote](#)



[COMMUNICATION Definition & Meaning .](#)



Dictionary

COMMUNICATION definition: the act or process of communicating; fact of being communicated. See examples of communication used in a sentence.

Request Quote



Communication Method, Base Station, and Terminal Device

TL;DR: In this paper, an antenna configuration indication method, a base station, a terminal and a computer storage medium is used to indicate the terminal to select the number of transceiving ...

Request Quote

Base station

Overview
Wireless communications
Land surveying
Computer networking
See also

In radio communications, a base station is a wireless communications station installed at a fixed location and used to communicate as part of one of the following: o a push-to-talk two-way radio system, or; o a wireless telephone system such as cellular CDMA or GSM cell site.



Request Quote



What Is A Base Station?

Base stations are an essential component of cellular networks, providing coverage and connectivity to mobile devices within a specific area or cell. How does the base station ...

Request Quote



What is Communication?

At its foundation, Communication focuses on how people use messages to generate meanings within and across various contexts, and is the discipline that studies all forms, modes, media, ...

[Request Quote](#)



Base Stations

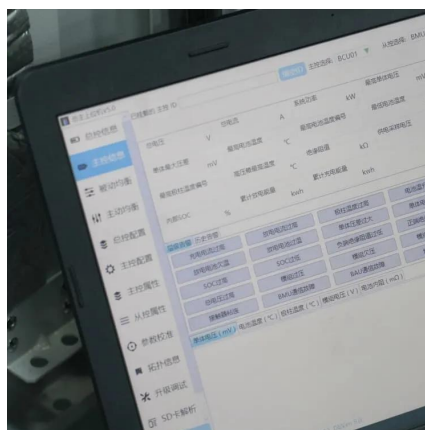
The present-day tele-space is incomplete without the base stations as these constitute an important part of the modern-day scheme ...

[Request Quote](#)

Understanding Base Stations: The Backbone of Wireless Communication

In cellular networks, a base station typically consists of antennas, a transmitter/receiver system, and a base station controller (BSC). The base station is ...

[Request Quote](#)



Base Stations and Cell Towers: The Pillars of Mobile Connectivity

Base stations use antennas mounted on cell towers to send and receive radio signals to and from mobile devices within their coverage area. This communication enables ...

[Request Quote](#)

Base Station Location and Channel



[Allocation in a](#)

In this paper, a mixed integer-programming (MIP) problem is proposed, which integrates into the same model the base station location problem, the frequency channel assignment problem ...

[Request Quote](#)



[Understanding Base Stations in Mobile Communication](#)

Effective communication about the benefits of base stations can help improve community relations and address aesthetic concerns. In summary, understanding the environmental considerations ...

[Request Quote](#)

What is Communication?

Communication is the process of exchanging information, ideas, thoughts and emotions--whether through spoken words, written texts, facial expressions or digital media. It's the foundation of ...

[Request Quote](#)



[Understanding Base Transceiver Stations: The Backbone of ...](#)

Simply put, a base transceiver station (BTS) is a vital component of mobile networks, serving as the communication hub that connects your mobile phone to the wider ...

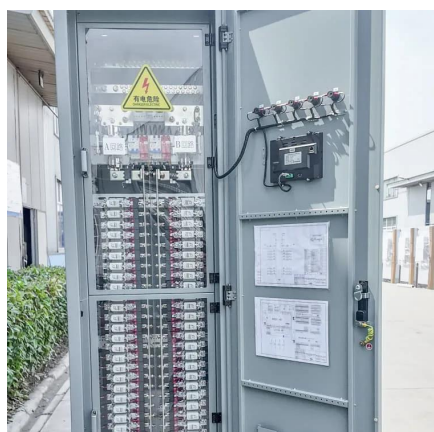
[Request Quote](#)

Base station



Wireless communications In radio communications, a base station is a wireless communications station installed at a fixed location and used to communicate as part of one of the following: a ...

[Request Quote](#)



Communication

Communication is commonly defined as the transmission of information. Its precise definition is disputed and there are disagreements about whether unintentional or failed transmissions are ...

[Request Quote](#)



Contact Us

For catalog requests, pricing, or partnerships, please visit:

<https://www.energyinnovationday.pl>

Phone: +48 22 335 1273

Email: info@energyinnovationday.pl

Scan the QR code to contact us via WhatsApp.

