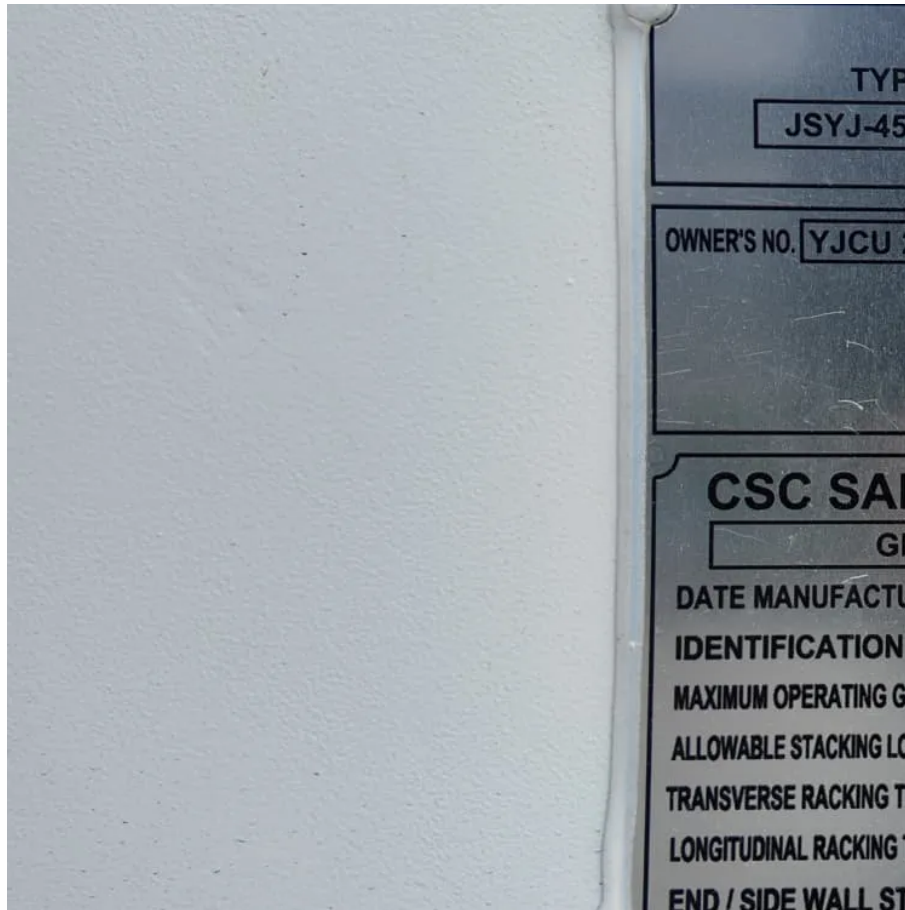




Communication green base station tower top design





Overview

What makes a good communication tower foundation design base?

The design of communication tower foundation design bases includes more than just materials; precision, reliability, and safety play major roles as well. Every step of the process ensures a strong and enduring foundation- from smart sensor integration and soil analysis to structural integrity and advanced grounding systems.

What is a communication tower foundation design?

A communication tower foundation design is the structural blueprint that determines the anchor point of the tower on the ground. Towers are not rooted by only pouring concrete—they require extensive soil analysis, wind loads, types of towers, and seismic activity to determine the necessary foundation for safety and sustainable use.

What happens if a communication tower Foundation fails?

Poorly designed communication tower foundations will result in structural failure, signal interruptions, expensive repairs, and safety issues for nearby personnel and equipment. Even the most sophisticated tower constructions will fail without dependable and resilient tower foundations.

What makes a tower a strong foundation?

Every step of the process ensures a strong and enduring foundation- from smart sensor integration and soil analysis to structural integrity and advanced grounding systems. When setting up a tower, one needs to consider more than meets the eye. It involves trust and the builders' integrity.



Communication green base station tower top design



Communication Base Station Innovation Trends , Huijue Group ...

As global mobile data traffic surges 35% annually, communication base stations face unprecedented demands. Can traditional tower designs sustain hyper-connected smart cities ...

[Request Quote](#)

[Communication Tower Foundation Design: 2025 Complete Guide](#)

For communication networks, electrical substations, and even transmission lines, we provide custom tower design solutions. Our customized structural solutions are catered ...

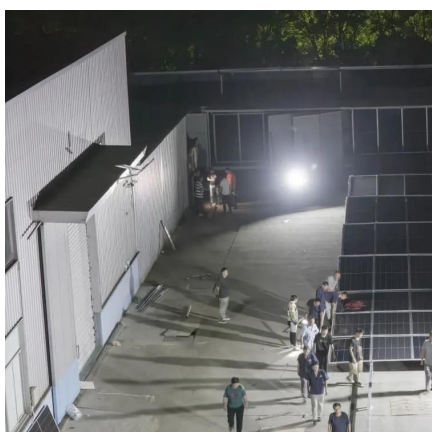
[Request Quote](#)



[Ericsson Shows Green Base Station + Tower Designs](#)

Ericsson unveiled a series of towers for wireless base stations and antennas that are more environmentally friendly and better able to blend in with a community than typical ...

[Request Quote](#)



Blog -Communication Signal Tower Types & Design, Mobile Base Station

Communication towers include new three-tube communication towers, traditional types of angle steel towers and guyed wire towers, etc. The design of the tower is aimed at the ...



[Request Quote](#)



[Communication green base station tower top design](#)

Jan 7, 2025 · From a high altitude in the city, the tower base stations on rooftops resemble steel guardians standing at the top of various buildings. It belongs to a type of macro ...

[Request Quote](#)



[Achieve Sustainability in a 5G World with Comba ...](#)

It has become the mainstream tower-top antenna solution for global 5G network construction by meeting existing and future radio network ...

[Request Quote](#)



Towards greener telecommunication towers: A framework for ...

It was concluded that lightweight fiber-reinforced polymer (FRP) tower was more economic and sustainable than steel towers. The material cost in the case of the FRP is 30% less, the ...

[Request Quote](#)



Blog -Communication Signal Tower



Types & Design, Mobile Base ...

Communication towers include new three-tube communication towers, traditional types of angle steel towers and guyed wire towers, etc. The design of the tower is aimed at the ...

[Request Quote](#)



Ericsson unveils innovative 'green' base station site concept ...

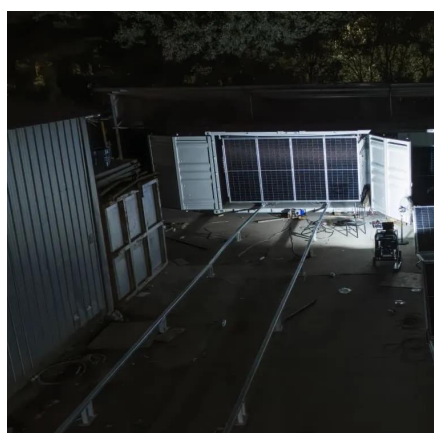
The modern design, from renowned Scandinavian architect Thomas Sandell, is a completely new approach to site architecture - the 5m-diameter, 40m-high flexible concrete tower ...

[Request Quote](#)

[Our communication green base station](#)

Ericsson made a point of its green credentials at the recent Mobile World Congress, and launched a "green" base station design back in 2007. Its commitment extends from materials used in ...

[Request Quote](#)



[Communication Tower Foundation Design: 2025 ...](#)

For communication networks, electrical substations, and even transmission lines, we provide custom tower design solutions. Our ...

[Request Quote](#)

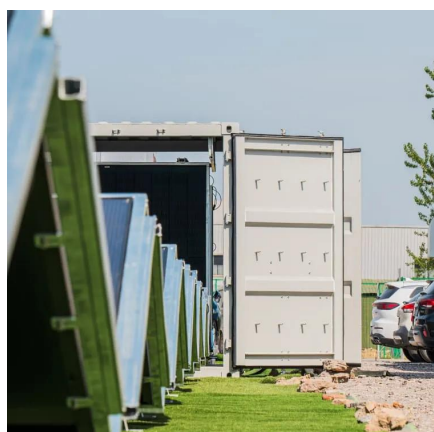
Achieve Sustainability in a 5G World



with Comba Green High ...

It has become the mainstream tower-top antenna solution for global 5G network construction by meeting existing and future radio network capacity and coverage requirements.

[Request Quote](#)



Toward Green Network: An Expanding of Base Station Energy ...

In this article, a robust RL-based multicells sleeping model called graph deep deterministic policy gradient (GDDPG) is developed for handling highly complex communication scenarios. ...

[Request Quote](#)



Contact Us

For catalog requests, pricing, or partnerships, please visit:

<https://www.energyinnovationday.pl>

Phone: +48 22 335 1273

Email: info@energyinnovationday.pl

Scan the QR code to contact us via WhatsApp.

