



# Communication green base station equipment lightning protection grounding





## Overview

---

The protection of GSM and base station towers from lightning and overvoltage is provided by integrating external lightning systems, internal lightning systems, earthing, equipotential bonding and LV surge arrester protection techniques within the framework of IEC-62305 standard.

The protection of GSM and base station towers from lightning and overvoltage is provided by integrating external lightning systems, internal lightning systems, earthing, equipotential bonding and LV surge arrester protection techniques within the framework of IEC-62305 standard.

A complete lightning current is discharged through the following paths: The magnitude of the lightning current GB50057-94 (2000 Edition) YD/T 5098-2001 Suggestion: Enter the building/station power supply B level. The protection should use 10/350 $\mu$ s waveform surge protective device. Multi-level.

Does a lightning arrester protect a telecommunication station?

Lightning protection (strikes with indirect effects) for telecommunication stations by lightning arresters, is applicable for all electrical networks. It is also compulsory to provide protection against lightning strikes with direct.

ERICO® has complete telecommunications applications solutions to help protect the facility against electrical noise, lightning induced surges and transients caused by switching components in the power systems. ERICO solutions include ERITECH® ground rods, ground mats, ground enhancing material.

Recommendation ITU-T K.112 provides a set of practical procedures related to the lightning protection, earthing and bonding of radio base stations (RBSs). It considers two types of RBS: those that are stand-alone installations, comprising a tower and the associated equipment and those that are.

This section describes the lightning protection and grounding requirements. Ensure that the equipment room meets the requirements because lightning is one of the major factors that causes damage to the USG. Table 6-7 lists the lightning protection and grounding requirements.



How are base stations protected from lightning strikes?

1. Grounding Grid and Ground Busbars In base station lightning protection design, the grounding grid and ground busbars are key components. With proper design, they can effectively reduce the impact of lightning on the station. 2. Base Station.



## Communication green base station equipment lightning protection gr



### [ITU-T Rec. K.112 \(07/2019\) Lightning protection, earthing ...](#)

The purpose of this Recommendation is to give detailed guidance on protection procedures, so that an engineer who is not a lightning protection expert can accomplish the design of the ...

[Request Quote](#)

### [How Are Base Stations Protected Against Lightning?](#)

In base station lightning protection design, the grounding grid and ground busbars are key components. With proper design, they can effectively reduce the impact of lightning on ...

[Request Quote](#)



### [Grounding, Lightning Protection and Surge Protection](#)

To make the application of these products simpler, the grounding, lightning protection and surge protection system at a telecommunications facility is divided into 5 components.

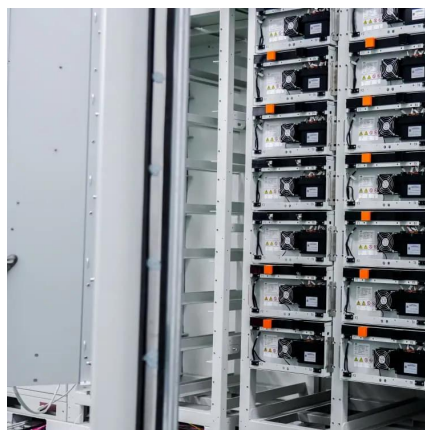
[Request Quote](#)



### [Grounding and Bonding For Home Stations](#)

Polyphaser () -- various papers and tutorials on lightning protection for communications facilities, including ham stations

[Request Quote](#)



### Communication green base station equipment installation ...

The protection of GSM and base station towers from lightning and overvoltage is provided by integrating external lightning systems, internal lightning systems, earthing, equipotential ...

[Request Quote](#)



## Lightning Protection and Grounding

This section describes the lightning protection and grounding requirements. Ensure that the equipment room meets the requirements because lightning is one of the major factors that ...

[Request Quote](#)



### **LBI-39067**

Coax and Transmission Line Grounding At Ericsson repeater sites and antenna tower locations, our installers must attach three lightning protection grounding kits to each coaxial line used at ...

[Request Quote](#)



### Lightning and Surge Protection for



## [Communication Station](#)

Install lightning rods, grounding, surge protectors, shielding, and follow standards for effective communication station protection.

[Request Quote](#)



## [How to Safeguard Mobile Base Stations from Lightning?](#)

In this article, we break down the key requirements of the industry standard YD5068-98 - Code for Design of Lightning Protection and Grounding of Mobile Communication Base Stations, and ...

[Request Quote](#)

## [Communication green base station carries out lightning ...](#)

The lightning protection grounding project should be implemented according to local conditions, and the base station grounding system should be designed according to the principle of

[Request Quote](#)





## Contact Us

---

For catalog requests, pricing, or partnerships, please visit:

<https://www.energyinnovationday.pl>

Phone: +48 22 335 1273

Email: [info@energyinnovationday.pl](mailto:info@energyinnovationday.pl)

Scan the QR code to contact us via WhatsApp.

