



# Cement Plant Use of Belgrade Solar Containerized Stationary Type





## Overview

---

In the CemSol research project, a team of scientists is developing and demonstrating a solar-heated calcination plant to produce cement. This process produces carbon dioxide, which is first to be separated and then bound in a lime circuit.

In the CemSol research project, a team of scientists is developing and demonstrating a solar-heated calcination plant to produce cement. This process produces carbon dioxide, which is first to be separated and then bound in a lime circuit.

A solar calcination reactor used during experiments in DLR's solar simulator. In the CemSol research project, a team of scientists is developing and demonstrating a solar-heated calcination plant to produce cement. This process produces carbon dioxide, which is first to be separated and then bound.

Belgrade Decumulative Concrete Batch Plants feature a basic, rugged design that is simple to operate for years of trouble-free service and ideal for small or entry-level producers. These 12-yard capacity plants are available with 24 or 30-inch conveyors and mild or abrasion-resistant steel hoppers.

**BELGRADE STEEL TANK - STATIONARY CEMENT AND FLY ASH SILOS | MH**  
Carmichael, Concrete Production Eq. Brrl A B C D Wt. Brrl A B C D Wt. Stationary Silo Standard Equipment: Leg w/3'6" clearance under discharge Outside Ladder w/Cage Full Railing 4" Blower Pipe w/adaptor (Optional 5" Blower Pipe) 150.

Double wall split silos can be configured to 50/50 or 33/66 compartment divisions. Belgrade offers structural stands (both drive-thru and non-drive-thru) and cement scales to add underneath their stationary silos. Portable round silos offer the ease of attached axles for easy transport and are.

In 1956, Mr. Vince Hagan, founder of The Vince Hagan Company, started with an original idea: he would design, build, and patent (U.S. patent #3,251,484) the very first fully mobile concrete batch plant. Over the years, his "Haganator," a heavy-duty truss design, became an industry icon. Today, it.

Concrete Batching Plants are modern production facilities that produce concrete



used in almost all construction projects with precise weighing and homogeneous mixing technology. Concrete in Concrete Plants is produced as follows: High-quality concrete is produced by mixing the aggregate, cement. What is a stationary concrete plant?

Thanks to its flexible structure, Stationary Concrete Plants offer configuration options that can meet the needs of the users completely and can be designed in a variety of ways. In stationary concrete plants, aggregate is transported to the mixer level by means of aggregate transfer conveyor or aggregate bucket.

Which cement plant is used for solar thermal application?

Location and DNI availability of the investigated plant A conventional cement plant (Kotputli Cement Works (KCW), an UltraTech Cement Limited manufacturing unit) at Kotputli, Jaipur, Rajasthan, was investigated for solar thermal application.

How is aggregate transported in a stationary concrete plant?

In stationary concrete plants, aggregate is transported to the mixer level by means of aggregate transfer conveyor or aggregate bucket. Since the aggregate bucket can operate at a steeper angle, it is suitable in cases where the facility should fit in a less area.

How a solar cement plant is designed?

Solar cement plant was designed based on cement production and the Direct Normal Irradiation (DNI) data available at plant location. Total thermal energy and the amount of land needed for the solar cement factory were analysed. Additionally, total mirror surface, number of heliostats, and land requirement are estimated.



## Cement Plant Use of Belgrade Solar Containerized Stationary Type



### [Solar Power Generation Installed on Cement Plants: The ...](#)

The cement sector accounts for 8% of global CO2 emissions - that's more than all trucks worldwide combined. With net-zero deadlines looming, solar power generation installed on ...

[Request Quote](#)

### [Decumulative Concrete Batch Plants , Belgrade ...](#)

Belgrade Decumulative Concrete Batch Plants feature a basic, rugged design that is simple to operate for years of trouble-free service and ideal ...

[Request Quote](#)



### [Concrete Batch Plants , Durable o Reliable O ...](#)

Attached cement dust collector and controllers are implemented on mobile and stationary batch plants to mitigate the dust that is produced and ...

[Request Quote](#)



## Producing cement with solar energy

In the CemSol research project, a team of scientists is developing and demonstrating a solar-heated calcination plant to produce ...

[Request Quote](#)



## BELGRADE STEEL TANK

Stationary Silo Standard Equipment: Leg w/3'6" clearance under discharge Outside Ladder w/Cage Full Railing 4" Blower Pipe w/adapter (Optional ...

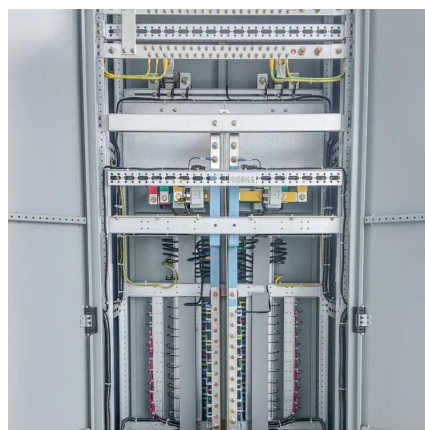
[Request Quote](#)



## Stationary Concrete Batching Plants

A stationary concrete batch plant is large-scale permanent structure ideal for high-volume concrete production projects such as bridges, dams, highways, large industrial, commercial, or ...

[Request Quote](#)



## MPPlants

Belgrade offers structural stands (both drive-thru and non-drive-thru) and cement scales to add underneath their stationary silos. Portable round silos offer the ease of attached axles for easy ...

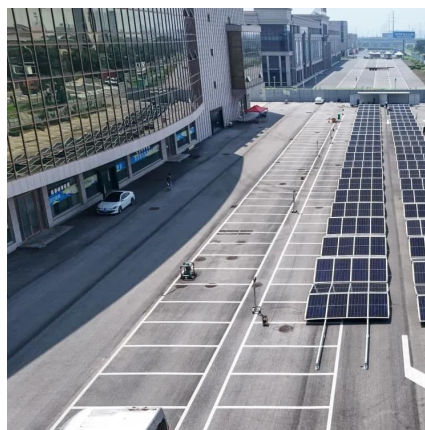
[Request Quote](#)

## What Is Stationary Concrete Plant



In stationary concrete plants, aggregate is transported to the mixer level by means of aggregate transfer conveyor or aggregate bucket. Since the ...

[Request Quote](#)



### [Concrete Batch Plants , Durable o Reliable o Innovative](#)

Attached cement dust collector and controllers are implemented on mobile and stationary batch plants to mitigate the dust that is produced and escapes into the surround area.

[Request Quote](#)



### **Overview of Concrete Batch Plants: types, parts & applications**

Stationary plants are permanently installed facilities built for high-volume concrete production. Their larger equipment and material storage allow continuous batching and mixing. Stationary ...

[Request Quote](#)



### **What Is Stationary Concrete Plant**

In stationary concrete plants, aggregate is transported to the mixer level by means of aggregate transfer conveyor or aggregate bucket. Since the aggregate bucket can operate at a steeper ...

[Request Quote](#)



### **BELGRADE STEEL TANK**



Stationary Silo Standard Equipment: Leg w/3'6" clearance under discharge Outside Ladder w/Cage Full Railing 4' Blower Pipe w/adapter (Optional 5' Blower Pipe) 150 Sq. Ft. Dust ...

[Request Quote](#)



### Design of solar cement plant for supplying thermal energy in cement

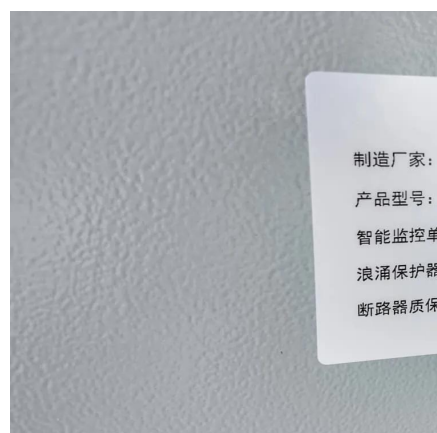
In the present work, the authors have attempted to design a solar cement plant for supplying solar energy to the cement industry. A case study was done, which investigated a ...

[Request Quote](#)

### [Decumulative Concrete Batch Plants, Belgrade Steel Tank](#)

Belgrade Decumulative Concrete Batch Plants feature a basic, rugged design that is simple to operate for years of trouble-free service and ideal for small or entry-level producers.

[Request Quote](#)



制造厂家:  
产品型号:  
智能监控单  
浪涌保护器  
断路器质保

### Design of solar cement plant for supplying thermal energy in ...

In the present work, the authors have attempted to design a solar cement plant for supplying solar energy to the cement industry. A case study was done, which investigated a ...

[Request Quote](#)

## Producing cement with solar energy



In the CemSol research project, a team of scientists is developing and demonstrating a solar-heated calcination plant to produce cement. This process produces ...

[Request Quote](#)





## Contact Us

---

For catalog requests, pricing, or partnerships, please visit:

<https://www.energyinnovationday.pl>

Phone: +48 22 335 1273

Email: [info@energyinnovationday.pl](mailto:info@energyinnovationday.pl)

Scan the QR code to contact us via WhatsApp.

