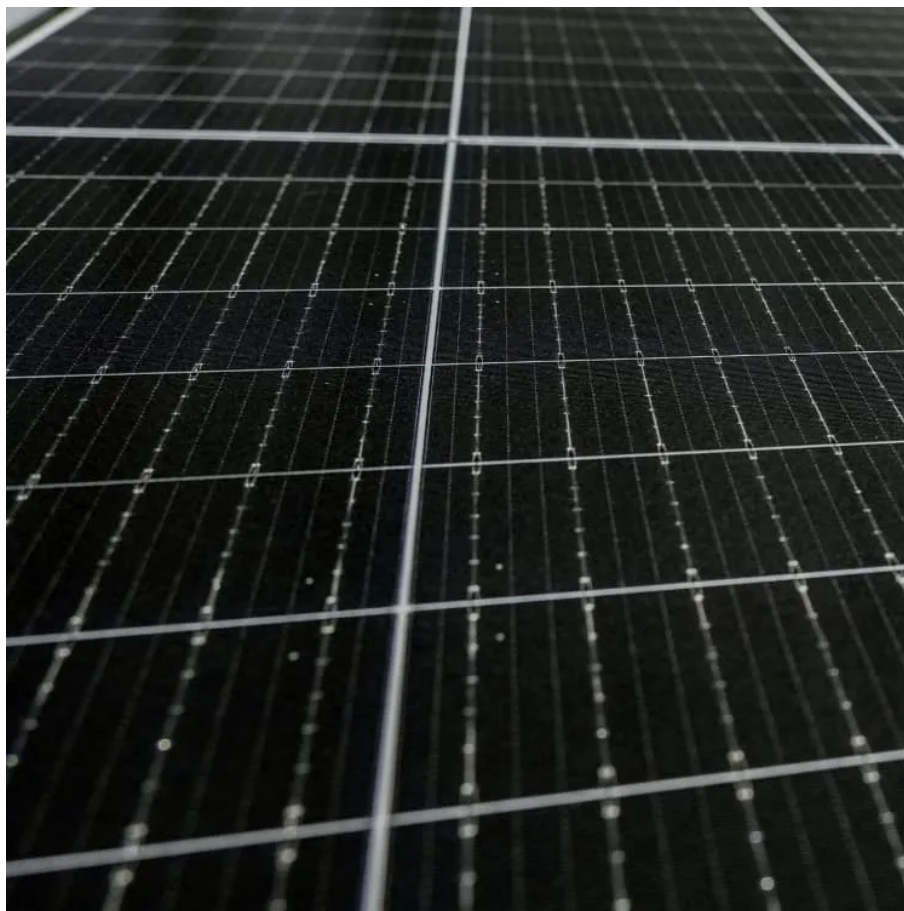




# Canberra Rural Home Outdoor Power BESS





## Overview

---

Will Canberra's energy supply be future-proof?

The ACT Government has reached a major milestone in its work to future-proof Canberra's energy supply. The development application has been approved to deliver Stream 1 of the project – a grid-scale battery in Williamsdale. This ACT Government has partnered with Eku Energy on this project. Construction will begin later this year.

What is Eku energy's big Canberra battery project?

With the capacity to store enough renewable energy to power one-third of Canberra for two hours during peak demand periods, the project is a crucial component of the ACT government's Big Canberra Battery initiative. Eku Energy has established an innovative revenue swap arrangement with the ACT government, ensuring mutual benefits for both parties.

How much power will the Big Canberra battery deliver?

The Big Canberra Battery will be capable of delivering 250 MW of power – more than a third of Canberra's peak electricity demand. It will be able to deliver this power for two hours. The Big Canberra Battery will have 500 MWh of capacity, which on a single charge could supply 23,400 households with their daily energy use.

What is the Big Canberra battery project?

Installation is underway on behind-the-meter batteries at nine sites. The Big Canberra Battery project will deliver an ecosystem of batteries across the ACT to ensure that our electricity grid remains stable. The Big Canberra Battery project includes the installation of: installation of behind-the-meter batteries at nine government sites.



## Canberra Rural Home Outdoor Power BESS



### [Williamsdale Battery Energy Storage System](#)

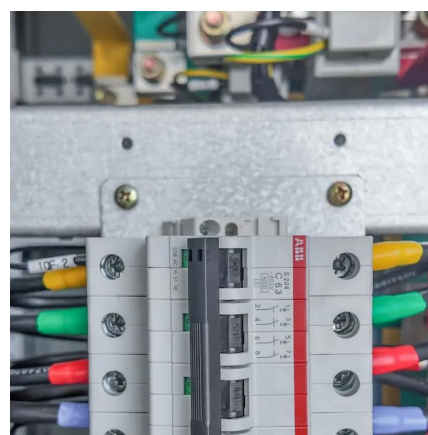
Explore the Williamsdale Battery Energy Storage System (BESS) project by Eku Energy, a 250MW/500MWh facility in Canberra. This project ...

[Request Quote](#)

### [Eku Energy reaches financial close on Williamsdale BESS](#)

With the capacity to store enough renewable energy to power one-third of Canberra for two hours during peak demand periods, the project is a crucial component of the ...

[Request Quote](#)



### [Habitat Energy to optimise 250-MW Canberra ...](#)

The BESS is already under construction and is scheduled to become operational in 2026. Once commissioned, the battery will be ...

[Request Quote](#)

### **Habitat Energy to optimise the 500MWh Williamsdale BESS in ...**

Optimiser Habitat Energy has secured a deal with energy storage developer Eku Energy to optimise its 250MW/500MWh Williamsdale battery energy storage system (BESS) in ...



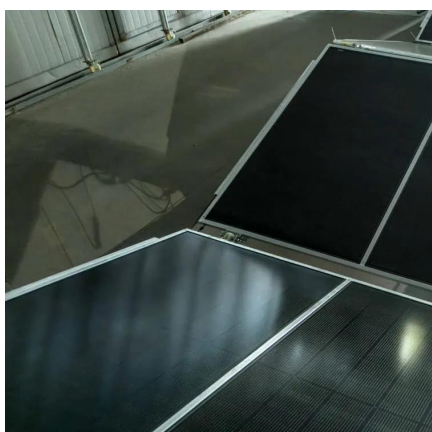
[Request Quote](#)



### **Habitat Energy to optimise 250-MW Canberra BESS for Eku Energy**

The BESS is already under construction and is scheduled to become operational in 2026. Once commissioned, the battery will be capable of storing power to meet the needs of ...

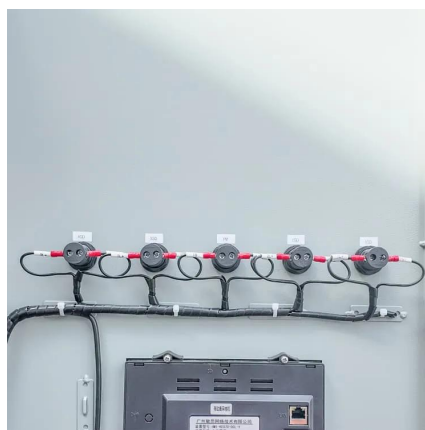
[Request Quote](#)



### **Milestone for Big Canberra Battery**

The ACT Government has reached a major milestone in its work to future-proof Canberra's energy supply. The development ...

[Request Quote](#)



### **[Big Canberra Battery - Williamsdale BESS](#)**

The large-scale battery energy storage system (BESS) will provide at least 250 megawatts (MW) of power. This is enough energy to power one-third of Canberra for two ...

[Request Quote](#)



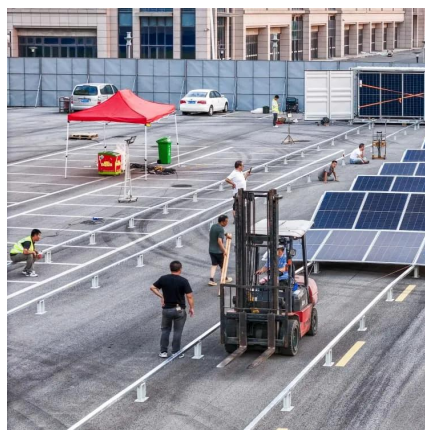
### **[Habitat Energy to optimise Eku Energy](#)**



## [Williamsdale battery](#)

Habitat Energy, a leading global optimiser of battery storage and renewable energy assets, has been appointed by Eku Energy, a global battery storage specialist, to optimise its ...

[Request Quote](#)



## **Milestone for Big Canberra Battery**

The ACT Government has reached a major milestone in its work to future-proof Canberra's energy supply. The development application has been approved to deliver Stream ...

[Request Quote](#)

## [Williamsdale Battery Energy Storage System](#)

Explore the Williamsdale Battery Energy Storage System (BESS) project by Eku Energy, a 250MW/500MWh facility in Canberra. This project enhances energy security and reliability, ...

[Request Quote](#)



## [Habitat Energy to optimise the 500MWh](#)

...

Optimiser Habitat Energy has secured a deal with energy storage developer Eku Energy to optimise its 250MW/500MWh ...

[Request Quote](#)

## **Canberra Mobile Outdoor Power**



## BESS: Revolutionizing Outdoor ...

The Canberra Mobile Outdoor Power BESS (Battery Energy Storage System) offers portable energy storage that adapts to diverse outdoor scenarios. This article explores how this ...

[Request Quote](#)



## Williamsdale BESS

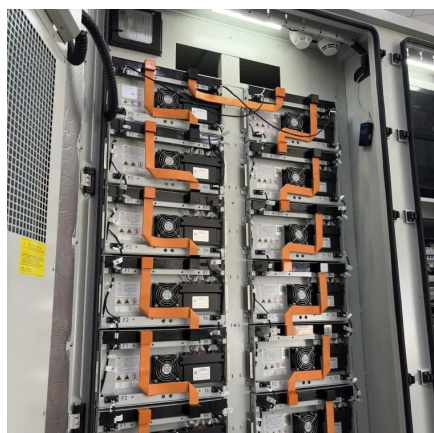
This project is one of the largest BESS announced in Japan and this award shows our extensive expertise covering project development, investment, construction and operation engineering ...

[Request Quote](#)

## Habitat Energy to optimise Eku Energy ...

Habitat Energy, a leading global optimiser of battery storage and renewable energy assets, has been appointed by Eku Energy, a ...

[Request Quote](#)



## Eku Energy reaches financial close on ...

With the capacity to store enough renewable energy to power one-third of Canberra for two hours during peak demand periods, the ...

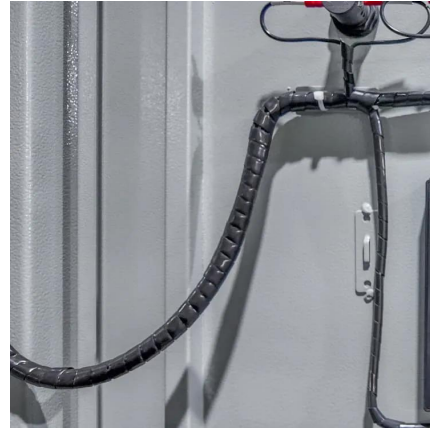
[Request Quote](#)

## Williamsdale BESS



As part of the ACT Government's Big Canberra Battery project, it supports the transition to cleaner energy for households and reinforces the Government's commitment to achieving net ...

[Request Quote](#)





## Contact Us

---

For catalog requests, pricing, or partnerships, please visit:

<https://www.energyinnovationday.pl>

Phone: +48 22 335 1273

Email: [info@energyinnovationday.pl](mailto:info@energyinnovationday.pl)

Scan the QR code to contact us via WhatsApp.

