



Can outdoor power supplies be charged to 100





Overview

Typically, they will show different levels of charge, such as 25%, 50%, 75%, and 100%. When all the indicator lights are lit up or when the light corresponding to 100% charge is illuminated, it usually means the power supply is fully charged.

Typically, they will show different levels of charge, such as 25%, 50%, 75%, and 100%. When all the indicator lights are lit up or when the light corresponding to 100% charge is illuminated, it usually means the power supply is fully charged.

Determining whether an outdoor energy power supply is fully charged is crucial for users who rely on these devices during their outdoor adventures or in off-grid situations. As a supplier of Outdoor Energy Power Supply, I understand the importance of providing clear guidance on this topic. In this.

While older lead-acid batteries required babysitting, today's lithium-ion (LiFePO₄) models boast smart charging circuits that halt power at 100%. Yet improper charging habits can still degrade your unit over time. Ideal for heavy-duty users, the EcoFlow DELTA Pro features an advanced BMS (Battery.

If you want to get the best out of your power station, it helps to understand how it shows charge levels. Some units make this super clear with digital screens. Others keep it simple with LED lights. Let's unpack the different types and what they mean. Many modern power stations come with LCD.

Most modern power stations have built-in protections against overcharging, allowing for safe, long-term charging without harming the battery. This article delves into the intricacies of this issue, addressing potential benefits, drawbacks, and best practices to optimize your power station's.

Most modern outdoor portable power stations use lithium-ion batteries, which are known for their high energy density, long lifespan, and relatively low self-discharge rate. However, these batteries are also sensitive to factors such as temperature, charge level, and cycling frequency. When a.

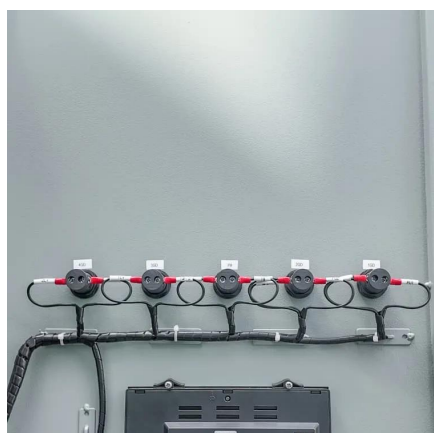
With their advanced lithium batteries and smart charging systems, the answer isn't as straightforward as a simple "yes" or "no." It depends on how you use the unit, the technology inside it, and your expectations for battery longevity. This article



will explain the safety, battery health, and.



Can outdoor power supplies be charged to 100



[How Long Do Portable Power Stations Last?](#)

When it comes to portable power station lifespan, one of the biggest questions is: For how long, exactly, will my portable power ...

[Request Quote](#)

[Is Your Portable Power Station Fully Charged?](#)

Battery percentage is the most straightforward method. When your display reads "100%," you're at full charge. Full Charge Icon/Text: ...

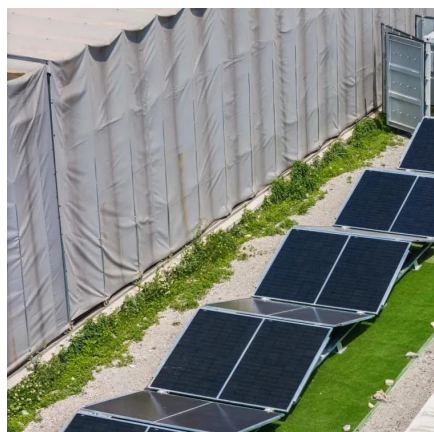
[Request Quote](#)



[Should You Keep Your Power Station Plugged in Continuously](#)

Charging a power station involves supplying DC power to its battery, which stores the energy for future use. The charging process typically has an upper limit of how much ...

[Request Quote](#)

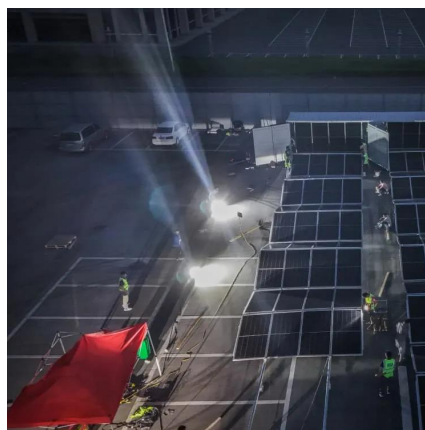


[Can You Use an Outdoor Power Supply When It's Not Fully ...](#)

Modern outdoor power supplies offer remarkable flexibility in charging. While full charges optimize capacity, partial use won't damage quality systems when following manufacturer guidelines.



[Request Quote](#)



[Should I Leave My Power Station Plugged In All the Time?](#)

Yes, you can leave your power station plugged in continuously. Most modern power stations have built-in protections against overcharging, allowing for safe, long-term ...

[Request Quote](#)

Can You Use an Outdoor Power Supply When It's Not Fully Charged...

Modern outdoor power supplies offer remarkable flexibility in charging. While full charges optimize capacity, partial use won't damage quality systems when following manufacturer guidelines.

[Request Quote](#)



Can I keep my power station (unit, battery) plugged in after a full charge?

All of our power stations are equipped with a Battery Management System (BMS) to prevent it from overcharging. To maintain and prolong the health of your power station, we do suggest ...

[Request Quote](#)



Can You Leave A Portable Power



Station Plugged In All The ...

Yes, it's safe thanks to BMS protections, though unplugging occasionally can maximize long-term battery health.

[Request Quote](#)



[Should You Keep Your Power Station Plugged in ...](#)

Charging a power station involves supplying DC power to its battery, which stores the energy for future use. The charging process ...

[Request Quote](#)



[Can You Overcharge a Portable Power Station?](#)

No, most modern portable power stations cannot be overcharged--but there's a critical catch. Imagine you've just unboxed a sleek new power station for your next camping ...

[Request Quote](#)



How do I know if an outdoor energy power supply is fully charged?

In conclusion, there are several methods you can use to determine whether an outdoor energy power supply is fully charged, including checking the indicator lights, monitoring the charging ...

[Request Quote](#)



Should I store an outdoor portable



power station fully charged?

Storing a power station fully charged can exacerbate this problem, as the battery will start to lose its charge from a higher initial level. This means that you may need to ...

[Request Quote](#)



How Long Do Portable Power Stations Last? Battery Life and ...

When it comes to portable power station lifespan, one of the biggest questions is: For how long, exactly, will my portable power stations last? By this, we don't just mean how ...

[Request Quote](#)

Is Your Portable Power Station Fully Charged? Here's How to Tell

Battery percentage is the most straightforward method. When your display reads "100%," you're at full charge. Full Charge Icon/Text: Look for "FULL," "100%," or a specific icon ...

[Request Quote](#)



Can I keep my power station (unit, battery) plugged in after a full ...

All of our power stations are equipped with a Battery Management System (BMS) to prevent it from overcharging. To maintain and prolong the health of your power station, we do suggest ...

[Request Quote](#)



Contact Us

For catalog requests, pricing, or partnerships, please visit:

<https://www.energyinnovationday.pl>

Phone: +48 22 335 1273

Email: info@energyinnovationday.pl

Scan the QR code to contact us via WhatsApp.

