



Can ordinary aluminum batteries be connected to inverters





Overview

Solar inverters are specifically designed to work with deep-cycle batteries, which have a different construction and capability compared to regular car batteries. Using a normal battery in a solar inverter can lead to poor performance, damage to the battery, or even cause safety.

Solar inverters are specifically designed to work with deep-cycle batteries, which have a different construction and capability compared to regular car batteries. Using a normal battery in a solar inverter can lead to poor performance, damage to the battery, or even cause safety.

Connecting inverters to batteries is an important part of an off-grid power solution or backup power system, and the right connections ensure that the system runs efficiently. This article will explore in detail how inverters and batteries work together, how to connect them correctly, and how to.

This article addresses the compatibility of batteries with older solar inverters and outlines effective strategies for integrating storage into your existing setup. Your solar inverter is the brain of your photovoltaic (PV) system. It converts the direct current (DC) electricity produced by your.

An inverter is a device that converts direct current (DC) from a battery into alternating current (AC) for powering household appliances. Batteries, on the other hand, store the DC power generated by solar panels or the grid. Together, they form a robust power backup system that keeps your lights.

Wiring an inverter to a battery isn't rocket science—but get it wrong, and you could fry your gear or drain your power fast. This quick guide shows you how to do it safely and efficiently. Whether you're setting up for backup power or going off-grid, here's how to get it right. How to wire an.

Understanding Inverter Functionality: Solar inverters convert DC electricity from solar panels to AC electricity for home use, and knowing their types (string, microinverters, power optimizers, hybrid) is crucial for efficient solar setup. **Battery Compatibility:** Normal batteries, like car.

Solar inverters are specifically designed to work with deep-cycle batteries, which



have a different construction and capability compared to regular car batteries. Using a normal battery in a solar inverter can lead to poor performance, damage to the battery, or even cause safety hazards. Solar.



Can ordinary aluminum batteries be connected to inverters



[How to Wire Inverter to Battery - No Sparks, Just ...](#)

Wiring an inverter to a battery isn't rocket science--but get it wrong, and you could fry your gear or drain your power fast. This quick ...

[Request Quote](#)

Battery connection for inverter

Never connect the inverter battery terminals incorrectly as it could cause severe damage to the inverter or the battery and potentially ...

[Request Quote](#)



Inverter Battery Connection: Essential Tips For Safe And Efficient

Learn essential tips for safe and efficient inverter battery connection. Discover step-by-step guides, wiring techniques, and troubleshooting tips to optimize your power backup system's ...

[Request Quote](#)

[How to Wire Inverter to Battery - No Sparks, Just Power](#)

Wiring an inverter to a battery isn't rocket science--but get it wrong, and you could fry your gear or drain your power fast. This quick guide shows you how to do it safely and ...



[Request Quote](#)



[Can I Use a Normal Battery in a Solar Inverter?](#)

No, you cannot use a normal battery in a solar inverter. Solar inverters are specifically designed to work with deep-cycle batteries, which have a different construction and ...

[Request Quote](#)

[How to Connect an Inverter to a Battery: Step-by ...](#)

Learn how to safely and efficiently connect an inverter to a battery with our step-by-step guide. Includes brand-specific tips for Solis, ...

[Request Quote](#)



How to Connect an Inverter to a Battery: Step-by-Step Guide for ...

Learn how to safely and efficiently connect an inverter to a battery with our step-by-step guide. Includes brand-specific tips for Solis, Deye, Megarevo, SRNE, and more.

[Request Quote](#)

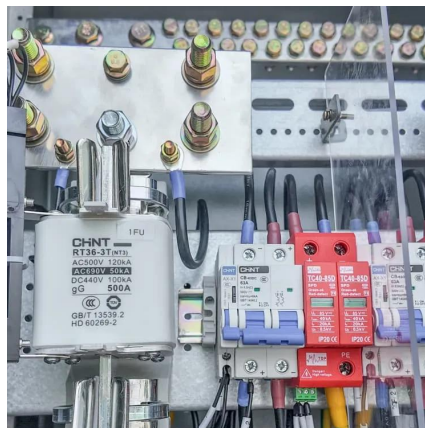
Can I Use Normal Battery in Solar



Inverter: Key Facts and Best

Battery Compatibility: Normal batteries, like car batteries, are not suitable for solar inverters due to their lack of deep cycling capability, which is essential for sustained energy use.

[Request Quote](#)



[Will a Battery Work with My Old Inverter? Expert Answers](#)

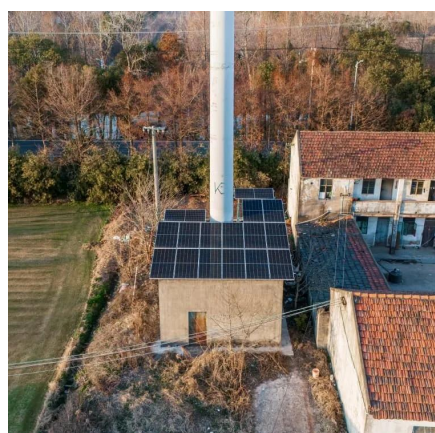
No, you typically cannot connect a battery directly to an old grid-tie inverter. These inverters are designed to feed power to the grid and lack the necessary hardware and ...

[Request Quote](#)

Battery connection for inverter

Never connect the inverter battery terminals incorrectly as it could cause severe damage to the inverter or the battery and potentially cause a fire. It is recommended looking at ...

[Request Quote](#)



How to Safely Connect a Battery to an Inverter: A Step-by-Step ...

Learn how to safely connect your batteries to your inverter with our guide. Avoid common wiring mistakes to optimize performance and extend system life.

[Request Quote](#)

[Can I Attach My Small Inverter Directly To](#)



[The Battery?](#)

Yes, you can connect your small inverter straight to the battery. This method allows the inverter to draw power directly from the battery. Connecting an inverter directly to a battery ...

[Request Quote](#)



Can You Use Old Batteries with a New Hybrid Inverter? A& E Dun

Thinking about upgrading to a new A& E Dunamis hybrid inverter but still have your old batteries lying around? It's a common question: Can I use old batteries with a new hybrid ...

[Request Quote](#)



Contact Us

For catalog requests, pricing, or partnerships, please visit:

<https://www.energyinnovationday.pl>

Phone: +48 22 335 1273

Email: info@energyinnovationday.pl

Scan the QR code to contact us via WhatsApp.

