



Can a 100W solar panel charge a 50W battery





Overview

Yes, a 100-watt solar panel can charge a battery, but its effectiveness depends on several factors, including the battery's capacity, the amount of sunlight, and the charging efficiency.

Yes, a 100-watt solar panel can charge a battery, but its effectiveness depends on several factors, including the battery's capacity, the amount of sunlight, and the charging efficiency.

When charging a 12V battery with solar panels, you first need to ensure that the output voltage of the solar panel is slightly higher than the charging demand of the battery, which is usually achieved by selecting a panel with the appropriate maximum power point voltage (V_{mpp}). Next, in order to.

Yes, a 100-watt solar panel can charge a battery, but its effectiveness depends on several factors, including the battery's capacity, the amount of sunlight, and the charging efficiency. Solar panels have become a popular and sustainable option for charging batteries, especially for off-grid setups.

A standard 100 watt solar panel with full sun exposure could provide complete daily charges for 35-50 Ah of lead acid battery capacity at 12V, or around 50 Ah at 24V. For lithium ion batteries which require specialized charging, you may get ~50% of the rated battery capacity. So at 24V nominal, a.

It takes a 100W solar panel about 8 hours to charge a 50Ah battery under ideal conditions (i.e. full sun with no shading). However, in real-world conditions (partial sun, clouds, etc.), it may take longer to charge the battery. It takes a 100W solar panel about 8 hours to charge a 50Ah battery. In.

How to calculate charging time of battery by solar panel?

Divide the battery's watt-hours by the panel's wattage, then add 20% to account for power loss. Convert battery capacity from Ah to Wh by multiplying with voltage. Factor in 20-30% efficiency loss from heat, wiring, and controllers. Panel.

For example, a 100-watt supply charges faster than a 30-watt panel, assuming similar conditions. Battery capacity (Ah): Battery size is measured in ampere-hours



(Ah). Once the size of the battery is known, it is easier to charge it. Suppose a 100Ah LiFePO₄ battery takes more time to charge than a.



Can a 100W solar panel charge a 50W battery



[100W Solar Panel: All Things Explained](#)

Yes, a 100W solar panel is highly suitable for camping or RV use due to its compact size and sufficient power output for charging small devices, lighting, and running ...

[Request Quote](#)

[How Many Batteries Can a 100W Solar Panel Charge?](#)

If you have a 100W solar panel and a 12V 100ah battery, the panel can charge it up to 50% capacity. Lead acid batteries require recharging before it drops to 50%, so the panel can top it ...

[Request Quote](#)



[What Size Solar Panel To Charge 12V Battery and ...](#)

Power level: the higher the power of the panel, the more power it produces, thus increasing the charging speed. For example, a ...

[Request Quote](#)



How Long Does It Take a 100W Solar Panel to Charge a 50Ah Battery?

It takes a 100W solar panel about 8 hours to charge a 50Ah battery under ideal conditions (i.e. full sun with no shading). However, in real-world conditions (partial sun, clouds, ...



[Request Quote](#)



Solar Panel Charge Time Calculator: Accurately Estimate How ...

Panel wattage: The wattage of a solar panel determines how quickly it can supply energy. If the panel's wattage is high, it can send energy to the battery more quickly, and vice ...

[Request Quote](#)



[How Many Batteries Can a 100 watt Solar Panel ...](#)

A standard 100 watt solar panel with full sun exposure could provide complete daily charges for 35-50 Ah of lead acid battery capacity ...

[Request Quote](#)



[Can a 100 Watt Solar Panel Charge a Battery?](#)

Yes, a 100-watt solar panel can charge a battery, but its effectiveness depends on several factors, including the battery's capacity, the amount of sunlight, and the charging ...

[Request Quote](#)



[Solar Battery Charge Time Calculator](#)



Solar Battery Charge Time Calculator determines the time required to fully charge a solar battery based on various input parameters.

[Request Quote](#)



What Size Solar Panel To Charge 12V Battery and how long ...

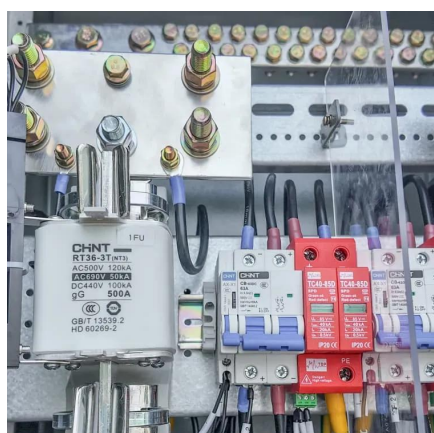
Power level: the higher the power of the panel, the more power it produces, thus increasing the charging speed. For example, a 100W solar panel can usually charge faster ...

[Request Quote](#)

[How to Calculate Charging Time of Battery by Solar Panel](#)

So here's the deal: figuring out how long your solar panel takes to charge a battery isn't rocket science. You just need the panel's wattage, the battery's capacity, and a pinch of ...

[Request Quote](#)



[How Many Batteries Can a 100 watt Solar Panel Charge?](#)

A standard 100 watt solar panel with full sun exposure could provide complete daily charges for 35-50 Ah of lead acid battery capacity at 12V, or around 50 Ah at 24V.

[Request Quote](#)

[What Size Solar Panel To Charge 100Ah](#)



[Battery? \(Calculator\)](#)

To adequately calculate the size of the solar panel to fully charge any 100Ah battery, we have to take a 2-step approach. Calculate how much juice solar panels have to add to the battery. This ...

[Request Quote](#)





Contact Us

For catalog requests, pricing, or partnerships, please visit:

<https://www.energyinnovationday.pl>

Phone: +48 22 335 1273

Email: info@energyinnovationday.pl

Scan the QR code to contact us via WhatsApp.

