



Can Luanda lithium batteries be connected to inverters





Overview

Yes, you can connect an inverter to a lithium battery. Lithium batteries, particularly Lithium Iron Phosphate (LiFePO₄) batteries, are well-suited for use with inverters due to their high efficiency, lightweight design, and ability to deliver consistent power.

Yes, you can connect an inverter to a lithium battery. Lithium batteries, particularly Lithium Iron Phosphate (LiFePO₄) batteries, are well-suited for use with inverters due to their high efficiency, lightweight design, and ability to deliver consistent power.

A lithium-ion battery for a home inverter can significantly enhance your home's energy storage capabilities. This translates to more reliable power during outages and better management of renewable energy resources like solar panels. Lithium-ion batteries require less maintenance and have a longer.

When setting up solar energy systems or home energy storage, a common question arises: Are lithium batteries compatible with all inverters?

The short answer is no - proper inverter matching is crucial for optimal performance and safety. Let's examine the key compatibility factors for lithium.

You install a new backup power system, everything looks good—the lithium battery is at 100%, the inverter is a solid brand, the specs match. Then you go to test it under a real load, and... click. The whole system shuts down. You've got a full battery, but zero power. That's not a faulty part. It's a.

Understanding the Role of Inverters and Lithium Batteries An inverter is the heart of any backup power system, converting DC (direct current) energy stored in batteries into usable AC (alternating current) energy for household or commercial appliances. On the other hand, lithium batteries store.

In this guide, we will take you through the step-by-step process of setting up communication between lithium batteries and a hybrid inverter. We will delve into the technical intricacies, highlighting key considerations and best practices for a successful setup. What is a Hybrid Inverter?



A hybrid.

In order to grasp the compatibility between inverters and lithium batteries, it's important to have a basic understanding of what they are. Let's start with inverters. An inverter is essentially a device that converts DC (direct current) power into AC (alternating current) power, allowing you to.



Can Luanda lithium batteries be connected to inverters



The Ultimate Guide to Matching Your Lithium Battery and Inverter

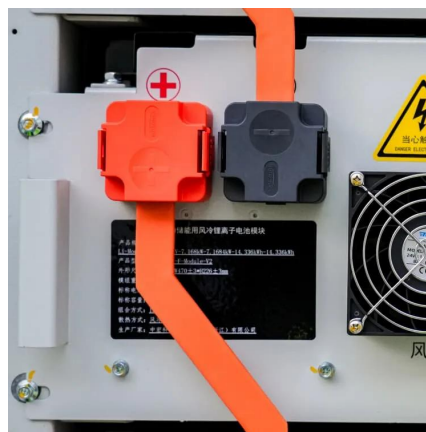
Conclusion: With that battery, you can run a 2500W inverter with a healthy safety margin. Its high cycle life and incredibly flat voltage curve mean it's a solid foundation for a powerful system.

[Request Quote](#)

[Can I Connect Inverter to Lithium Battery?](#)

Yes, you can connect an inverter to a lithium battery. Lithium batteries, particularly Lithium Iron Phosphate (LiFePO4) batteries, are well-suited for use with inverters due to their ...

[Request Quote](#)



Compatibility of Lithium-Ion Batteries with Existing Inverters

This blog post will walk you through the essentials of lithium-ion batteries, their benefits, and the steps to seamlessly integrate them with your current inverter setup. From practical examples ...

[Request Quote](#)



Importance of Compatibility Between Inverter and Lithium Battery

Lithium batteries are known for their longevity, but their lifespan can be significantly shortened if paired with an incompatible inverter. Inverters that are not designed to work with ...



[Request Quote](#)



[Can Lithium Batteries Work With Any Type of ...](#)

The short answer is no - proper inverter matching is crucial for optimal performance and safety. Let's examine the key compatibility ...

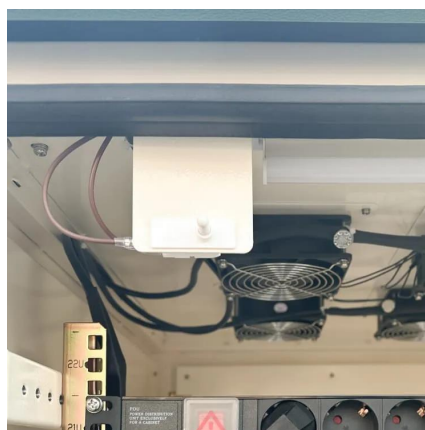
[Request Quote](#)



[Understanding the Basics of Connecting Lithium ...](#)

The first step is choosing a compatible inverter and lithium battery system. Ensure that the battery's voltage is within the range that ...

[Request Quote](#)



[Lithium Battery for Inverter: Pros, Specs, and Tips](#)

Can I replace my lead-acid battery with lithium in my inverter system? Yes, but you must ensure your inverter and charger are ...

[Request Quote](#)



How to Connect a Lithium Battery to



an Inverter: Complete Step ...

Learn how to connect a lithium battery to an inverter safely and efficiently with step-by-step guidance, and safety precautions for stable power use.

[Request Quote](#)



[Importance of Compatibility Between Inverter and ...](#)

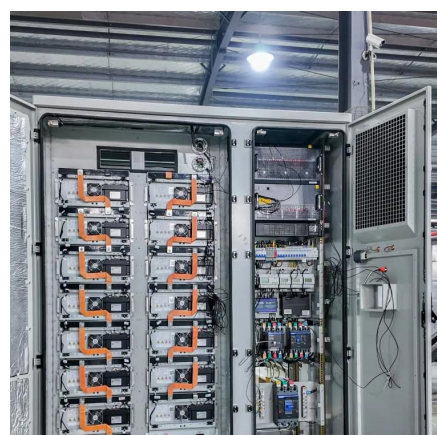
Lithium batteries are known for their longevity, but their lifespan can be significantly shortened if paired with an incompatible ...

[Request Quote](#)

[Can all inverters use lithium batteries?](#)

Not all inverters are designed to work with lithium batteries, so it's essential to ensure that your chosen inverter can support this type of battery. The first thing you need to ...

[Request Quote](#)



Hybrid Inverter and Lithium Batteries: Setup Guide and Best ...

Not all inverters are compatible with all lithium batteries. Therefore, it is crucial to ensure that the inverter you choose is designed to work with the specific type of lithium battery you plan to use.

[Request Quote](#)

[Can Lithium Batteries Work With Any Type](#)



[of Inverter?](#)

The short answer is no - proper inverter matching is crucial for optimal performance and safety. Let's examine the key compatibility factors for lithium battery and LiFePO4 battery ...

[Request Quote](#)



[Compatibility of Lithium-Ion Batteries with Existing ...](#)

This blog post will walk you through the essentials of ...

[Request Quote](#)

[Lithium Battery for Inverter: Pros, Specs, and Tips](#)

Can I replace my lead-acid battery with lithium in my inverter system? Yes, but you must ensure your inverter and charger are compatible with lithium charging profiles.

[Request Quote](#)



Understanding the Basics of Connecting Lithium Batteries to Inverters

The first step is choosing a compatible inverter and lithium battery system. Ensure that the battery's voltage is within the range that the inverter supports.

[Request Quote](#)

[Hybrid Inverter and Lithium Batteries:](#)



[Setup Guide ...](#)

Not all inverters are compatible with all lithium batteries. Therefore, it is crucial to ensure that the inverter you choose is designed to work with the

...

[Request Quote](#)





Contact Us

For catalog requests, pricing, or partnerships, please visit:

<https://www.energyinnovationday.pl>

Phone: +48 22 335 1273

Email: info@energyinnovationday.pl

Scan the QR code to contact us via WhatsApp.

