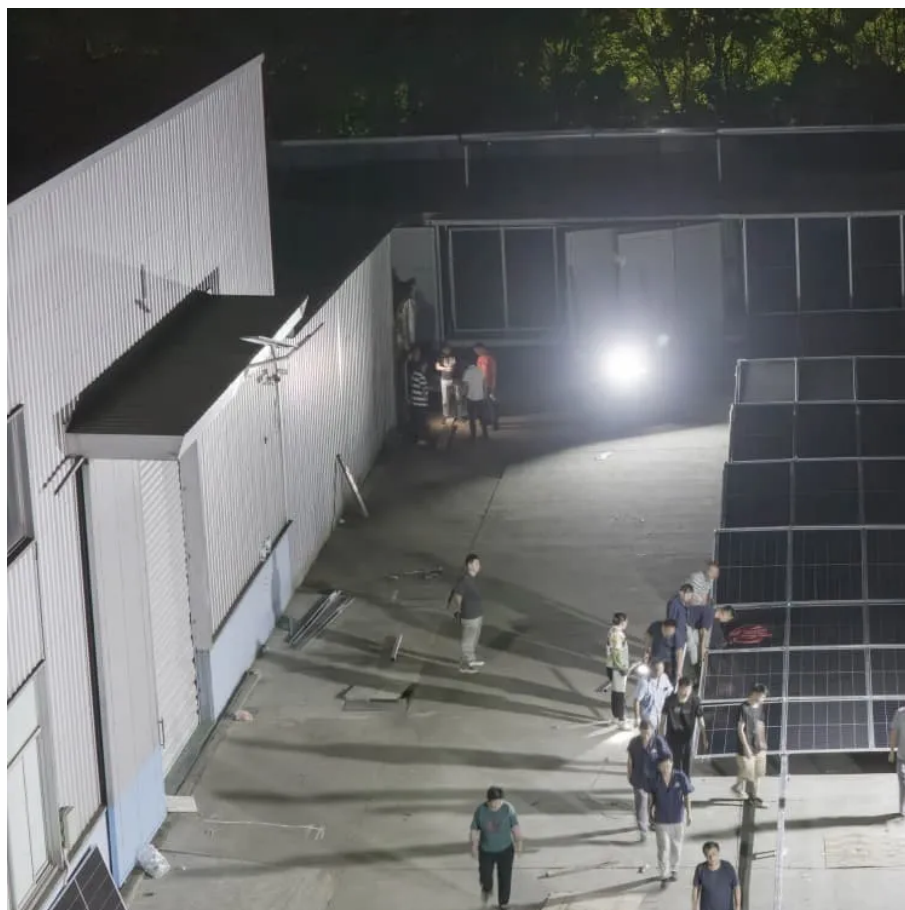




Can I bring an solar container outdoor power to the customs in Pretoria





Overview

Go to eFiling on and register or login. Follow these easy steps on eFiling: To see the detailed steps and screens, see the SC-CF-42 - Customs Trader Portal - External Guide.

Go to eFiling on and register or login. Follow these easy steps on eFiling: To see the detailed steps and screens, see the SC-CF-42 - Customs Trader Portal - External Guide.

the Republic by one of the following modes of transport: Air, Sea, Road, Rail or Post. In order for Customs to safeguard any revenue due to the State and ensure compliance with national legislation, the importer must declare to Customs what they have brought into the country and the mode of trans.

If you are planning to bring controlled goods, used or second-hand goods, waste or scrap into the country, you first need to register as an importer with the South African Revenue Service (Sars) and then apply to the International Trade Administration Commission (ITAC) An import permit ensures that.

Goods arrive in the Republic by one of the following modes of transport: Air, Sea, Road, Rail, Post including transmission commodities like crude oil, natural gas and their derivatives and other liquids and gases transported through cross-border pipelines as well as electricity transmitted through.

The solar industry in South Africa is facing a new wave of pressure, as import duties are now officially applied to various renewable energy components, including photovoltaic (PV) solar panels. Although the 10% import duty officially came into effect in June 2024, many installers and developers.

The South African Revenue Service (SARS) defines approximately 90,000 product tariff codes that are strictly enforced on all imports. New-to-Market U.S. exporters are actively encouraged to engage the services of a reputable freight forwarding/customs clearance agent well versed in South African.

Some items are allowed in without needing to be declared. 1st Move International has listed everything you can and can't bring in one place. There are items that South African customs strictly prohibit from entering the country. They will be



seized and you may face penalties. All illegal drugs are. How can I bring goods into South Africa?

They need to be accompanied by a letter or certified prescription from a registered physician. If you are in any doubt whether any goods that you intend to bring into South Africa are prohibited or restricted, please contact your nearest South African Embassy/High Commission abroad or the nearest Customs office in South Africa.

What items are prohibited in South Africa?

There are items that South African customs strictly prohibit from entering the country. They will be seized and you may face penalties. All illegal drugs are strictly prohibited from entering South Africa, including cocaine, heroin, cannabis and all drug paraphernalia.

Are guns allowed in South Africa?

You should also carry a doctor or valid prescription and the medicine should be in its original packaging. You will also need to declare these items. Firearms are allowed in South Africa if you have a valid import permit from the South African Police Service's Central Firearms Registry.



Can I bring an solar container outdoor power to the customs in Pretoria



South Africa

The following is required for shipments to South Africa: For customs purposes in South Africa, one negotiable and two non-negotiable copies of the Bill of Lading are required. ...

[Request Quote](#)

[IMPORT DUTIES NOW IN EFFECT - What It](#)

...

The solar industry in South Africa is facing a new wave of pressure, as import duties are now officially applied to various renewable ...

[Request Quote](#)



Import permit for general goods

If you are planning to bring controlled goods, used or second-hand goods, waste or scrap into the country, you first need to register as an importer with the South African Revenue Service ...

[Request Quote](#)

[Your Essential Guide to Importing Goods into ...](#)

For importers based outside of South Africa, the process is slightly different. You'll need to register directly with SARS as a "foreign ...

[Request Quote](#)



What Can You Bring into South Africa? Restricted and Prohibited ...

Products made from endangered or protected trees, such as mahogany or rosewood, are restricted, and you will need a permit to bring them to South Africa. Specifically, you'll need to ...

[Request Quote](#)



[Importers , South African Revenue Service](#)

Foreign entities clearing cargo for international transit through South Africa are not required to register with Customs. No security is required at time of registration.

[Request Quote](#)



IMPORT DUTIES NOW IN EFFECT - What It Means for Solar in ...

The solar industry in South Africa is facing a new wave of pressure, as import duties are now officially applied to various renewable energy components, including photovoltaic (PV) ...

[Request Quote](#)



[GENERAL INFORMATION ON THE IMPORT](#)



OF GOODS ...

Customs may also detain goods for other Government departments. The relevant Government department will then ensure compliance with their applicable laws, regulations and rules.

[Request Quote](#)



Your Essential Guide to Importing Goods into South Africa

For importers based outside of South Africa, the process is slightly different. You'll need to register directly with SARS as a "foreign principal" and appoint a South African ...

[Request Quote](#)



Imports , South African Revenue Service

In order for Customs to safeguard any revenue due to the State and ensure compliance with national legislation, the importer must declare to Customs what they have ...

[Request Quote](#)



7-steps-to-importing-e-book_V19022024.pdf

To be a registered importer you must have an import export license, also referred to as a Customs code or CCN number. This is a unique number (like your income tax number) that may belong ...

[Request Quote](#)

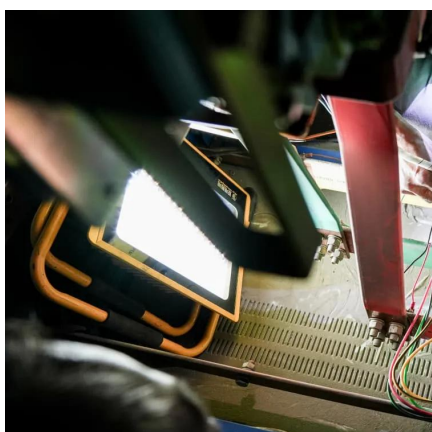
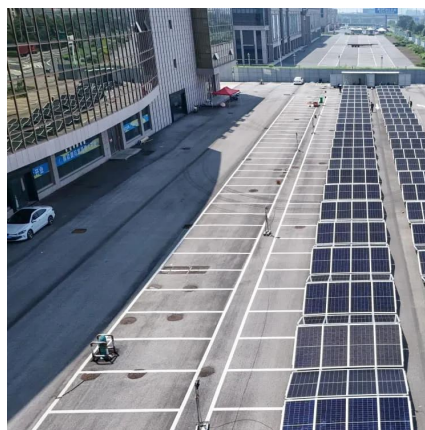


South Africa Travel Guide



You can bring in personal effects, sport and recreational equipment, either as accompanied or unaccompanied baggage, for your own use during your ...

[Request Quote](#)



South Africa Travel Guide

You can bring in personal effects, sport and recreational equipment, either as accompanied or unaccompanied baggage, for your own use during your visit. In the case of very expensive ...

[Request Quote](#)

Import permit for general goods

In order for Customs to safeguard any revenue due to the State and ensure compliance with national legislation, the importer must declare to Customs what they have ...

[Request Quote](#)





Contact Us

For catalog requests, pricing, or partnerships, please visit:

<https://www.energyinnovationday.pl>

Phone: +48 22 335 1273

Email: info@energyinnovationday.pl

Scan the QR code to contact us via WhatsApp.

