



C Transmission base station communication equipment





Overview

A base station, also known as a cell site or cell tower, is used for wireless communication. It is a fixed location equipped with antennas and other equipment that receives and transmits radio signals to and from mobile devices, such as smartphones, tablets, and other wireless.

A base station, also known as a cell site or cell tower, is used for wireless communication. It is a fixed location equipped with antennas and other equipment that receives and transmits radio signals to and from mobile devices, such as smartphones, tablets, and other wireless.

A cell site, cell phone tower, cell base tower, or cellular base station is a cellular-enabled mobile device site where antennas and electronic communications equipment are placed (typically on a radio mast, tower, or other raised structure) to create a cell, or adjacent cells, in a cellular.

The present-day tele-space is incomplete without the base stations as these constitute an important part of the modern-day scheme of wireless communications. They are referred to as cell towers or cellular antennas. These types of objects are an inevitability since they serve the purpose of.

A base station is an integral component of wireless communication networks, serving as a central point that manages the transmission and reception of signals between cellular networks and mobile devices. It ensures that users can access voice and data services effectively. Now that we have a solid.

These base stations provide the cell with the network coverage which can be used for transmission of voice, data, and other types of content. In radio communications, a transceiver is a two-way radio that combines both a radio transmitter and a receiver that exchanges information in half-duplex.

A typical communication base station combines a cabinet and a pole. The cabinet houses critical components like main base station equipment, transmission equipment, power supply systems, and battery banks. Meanwhile, the pole serves as a mounting point for antennas, Remote Radio Units (RRUs), and.

In the world of wireless communication, Base Transceiver Stations (BTS) play a



crucial role in ensuring seamless connectivity, especially within buildings. Shared Access explores what a BTS is, its components, functions and the significance of BTS in providing in-building wireless coverage. What is.



C Transmission base station communication equipment



[Cellular Networks, Cells, and Base Stations -- EITC](#)

A cell site (or cell tower, or cellular base station) is a cellular-enabled mobile device site where antennae and electronic communications equipment are placed - typically ...

[Request Quote](#)

[Complete Guide to 5G Base Station Construction](#)

Explore how 5G base stations are built--from site planning and cabinet installation to power systems and cooling solutions. Learn the ...

[Request Quote](#)



[The Cellular Concept-- System Design Fundamentals](#)

Each base station constantly monitors the signal strengths of all of its reverse voice channels to determine the relative location of each mobile user with respect to the base station tower.

[Request Quote](#)



Base Transceiver Stations (BTS)

What is a Base Transceiver Station? A Base Transceiver Station, commonly known as BTS, is a critical piece of equipment in wireless communication ...

[Request Quote](#)



Complete Guide to 5G Base Station Construction , Key Steps, Equipment

Explore how 5G base stations are built--from site planning and cabinet installation to power systems and cooling solutions. Learn the essential components, technologies, and ...

[Request Quote](#)



Types and Applications of Mobile Communication Base Stations

Mobile communication base station is a form of radio station, which refers to a radio transceiver station that transmits information between mobile phone terminals through a ...

[Request Quote](#)



Base Transceiver Stations (BTS)

What is a Base Transceiver Station? A Base Transceiver Station, commonly known as BTS, is a critical piece of equipment in wireless communication networks.

[Request Quote](#)



Cell site



Overview A cellular network is a network of handheld mobile phones (cell phones) in which each phone communicates with the telephone network by radio waves through a local antenna at a ...

[Request Quote](#)



Base Stations

The present-day tele-space is incomplete without the base stations as these constitute an important part of the modern-day scheme ...

[Request Quote](#)



Base Transceiver Station

A base transceiver station (BTS) is a critical network component that serves as the primary hardware interface between mobile devices and the cellular network, facilitating wireless ...

[Request Quote](#)



Base Stations

The present-day tele-space is incomplete without the base stations as these constitute an important part of the modern-day scheme of wireless communications. They are ...

[Request Quote](#)



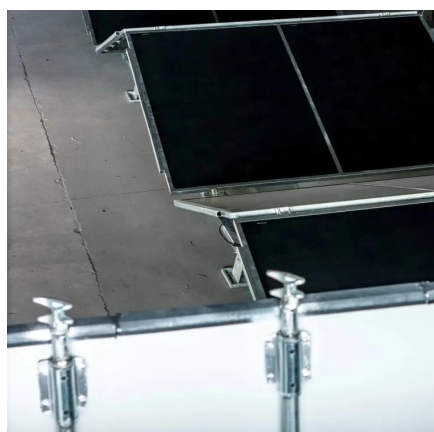
[Types and Applications of Mobile](#)



[Communication ...](#)

Mobile communication base station is a form of radio station, which refers to a radio transceiver station that transmits information ...

[Request Quote](#)



What Is A Base Station?

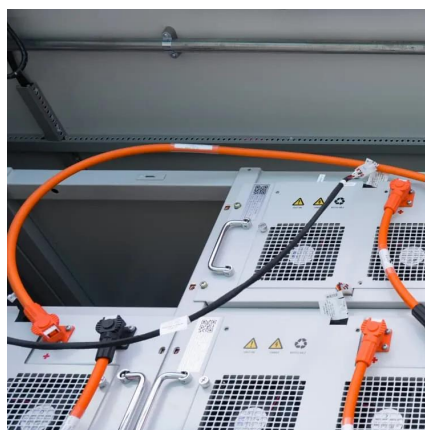
A base station is a piece of equipment that facilitates wireless communication between devices and a network. It contains the necessary hardware and software to transmit ...

[Request Quote](#)

Base Stations and Cell Towers: The Pillars of Mobile Connectivity

Base stations use antennas mounted on cell towers to send and receive radio signals to and from mobile devices within their coverage area. This communication enables ...

[Request Quote](#)





Contact Us

For catalog requests, pricing, or partnerships, please visit:

<https://www.energyinnovationday.pl>

Phone: +48 22 335 1273

Email: info@energyinnovationday.pl

Scan the QR code to contact us via WhatsApp.

