



Bissau traffic signal base station





Overview

What is a base station in telecommunications?

In telecommunications, a base station is a fixed transceiver that serves as the main communication point for one or more wireless mobile client devices. It not only connects wireless devices to each other but also links them to other networks or devices, often through dedicated high-bandwidth wired or fiber optic connections.

What is a wireless base station?

A base station represents an access point for a wireless device to communicate within its coverage area. It usually connects the device to other networks or devices through a dedicated high bandwidth wire or fiber optic connection. Base stations typically have a transceiver, capable of sending and receiving wireless signals;.

How can I see the location of a mapped base station?

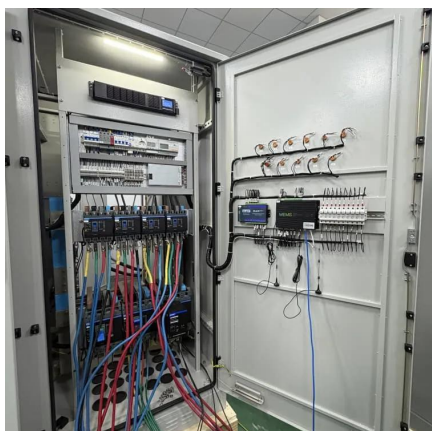
The map opens from left side main menu. In the maps tab you can see the location of already mapped base stations. The application will automatically only show the base stations of the current network being used (LTE in the picture). The location of base stations can also be viewed from the Cellmapper webmap.

What is a traffic signal system use case?

The user configures the signal system to monitor specific groups of traffic signal intersections and overall signal system status. This use case covers the management of the traffic signal network by the user. These operations include the following: Enabling diversion plans.



Bissau traffic signal base station



EMF

As you move out of the cell, the phone will automatically look for signal from an adjoining base station. There is usually a smooth transition or 'handover' from cell to cell.

[Request Quote](#)

TRAFFIC SIGNAL SYSTEMS ENGINEERING

This chapter presents an overview of various systems engineering processes for developing traffic signal systems based on a review of pertinent literature and current methodologies ...

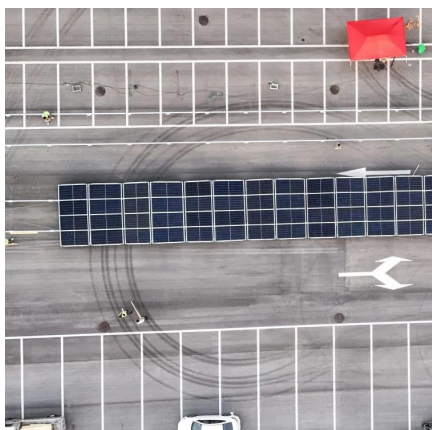
[Request Quote](#)



Base Stations

They come in various types such as omnidirectional or sector antennas responding to diverse coverage needs. Controller and processor: These components manage the ...

[Request Quote](#)



Base Stations

They come in various types such as omnidirectional or sector antennas responding to diverse coverage needs. Controller and ...

[Request Quote](#)



Microsoft Word

Pedestrian signals shall be installed on separate pedestrian poles and not be placed on the traffic signal poles unless approved by the Regional Traffic Engineer.

[Request Quote](#)

902.15 Designing a Traffic Signal

15.1 Preparation of Plans
15.2 Location of Signals and Appurtenances
15.3 Detectors
15.4 Pull Boxes
15.5 Conduit System
15.6 Control and Power Cable
15.7 Traffic Signal Installations
15.8 Modifying Existing Traffic Signal Installations
15.9 Temporary Signals During Upgrades
15.10 Quantities
Guidance. Permanent signals are installations using steel mast arm poles or steel span wire, underground conduit and basic intersection lighting. Temporary signals are installed using wood poles. They are used for construction projects or where a project will be replacing them in the near future. Mast arm pole signal installations are preferable, but see more on [epg.modot Wikipedia](#)

Base transceiver station - Wikipedia

Provides transmission and reception of signals. It also does sending and reception of signals to and from higher network entities (like the base station controller in mobile telephony). This can ...





[Request Quote](#)



Base transceiver station

Provides transmission and reception of signals. It also does sending and reception of signals to and from higher network entities (like the base station controller in mobile telephony). This can ...

[Request Quote](#)

Cellular Tower Maps

The base station is marked on the map as a red pin in mobile and a red arrow in a browser. A blue pin refers to your own location and the black line tells you which station you are ...

[Request Quote](#)



EMF

As you move out of the cell, the phone will automatically look for signal from an adjoining base station. There is usually a smooth transition or ...

[Request Quote](#)

What Is A Base Station?

A base station is an integral component of wireless communication networks, serving as a central point that manages the transmission and reception of signals between ...

[Request Quote](#)





902.15 Designing a Traffic Signal

Bases for mast arm signals located in islands or behind curbs are Type A. Type F (flush-mounted) bases are used beyond shoulders or sidewalk locations where the only ...

[Request Quote](#)

Cellular Tower Maps

The base station is marked on the map as a red pin in mobile and a red arrow in a browser. A blue pin refers to your own location and the black ...

[Request Quote](#)



Traffic Signal Program Handbook

The purpose of this Traffic Signal Program Handbook (TSPH) is to advance the use of objectives and performance-based approaches to traffic signal management in order to improve design ...

[Request Quote](#)

What Is A Base Station?

A base station is an integral component of wireless communication networks, serving as a central point that manages the ...

[Request Quote](#)





Contact Us

For catalog requests, pricing, or partnerships, please visit:

<https://www.energyinnovationday.pl>

Phone: +48 22 335 1273

Email: info@energyinnovationday.pl

Scan the QR code to contact us via WhatsApp.

