



Berlin inverter overvoltage





Overview

The subcycle overvoltage condition describes the electrical generation fault mode that is associated with the (IBR, like and) and can cause a massive and instantaneous loss of . When the overvoltage condition is detected, the IBR devices self-protect by disconnecting from the grid and can only come back online once the voltage returns to the design limits. In the meantime, a

Check your inverter's maximum DC input voltage and ensure your solar array is designed within that limit—even during cold weather conditions. Use design tools or consult a professional to calculate voltage based on panel specs and local temperature extremes.

Check your inverter's maximum DC input voltage and ensure your solar array is designed within that limit—even during cold weather conditions. Use design tools or consult a professional to calculate voltage based on panel specs and local temperature extremes.

The inverter is the core of modern electric drive systems, enabling precise motor speed control. To ensure safe and stable operation, it continuously monitors key parameters—voltage, current, temperature, and frequency. This article analyzes overvoltage faults in inverter voltage detection.

Overvoltage and Undervoltage Overvoltage This is caused by a high intermediate circuit DC voltage. This can arise from high inertia loads decelerating too quickly, the motor turns into a generator and increases the inverter's DC voltage. There are other causes of DC overvoltage, however. POSSIBLE.

Regulations require solar systems to shut off if the average grid voltage over any 10 minute period exceed 255V or right away at 260V. What are the consequences of having over-voltage issues?

Depending on how long the system is turned off due to the over-voltage issue, Solar Analytics will detect.

The subcycle overvoltage condition describes the electrical generation fault mode that is associated with the inverter-based resources (IBR, like solar photovoltaics and wind turbines) and can cause a massive and instantaneous loss of electricity generation. When the overvoltage condition is.



Overvoltage (OV) is one of the most common faults in inverters, especially in systems with high-inertia loads such as cranes, coil unwinders in the steel or cable industry, or in environments with unstable power supply. If not handled properly, this error may cause sudden shutdowns, disrupt.

Inverter overvoltage errors occur when the DC input voltage from your solar panels exceeds the inverter's maximum voltage rating. While your system may still operate temporarily, this can damage the inverter or cause it to shut down as a protective measure. Common Causes Too many panels in series -. What is a fast overvoltage protection mechanism?

Inverters, whether used for photovoltaic (PV) systems or energy storage facilities, typically include internal fast overvoltage protection mechanisms designed primarily to protect the inverter itself from damaging transients.

Can external grounding transformers reduce overvoltage in inverter based systems?

Transient overvoltages during single-line-to-ground faults are often mitigated by introducing external grounding transformers in traditional synchronous generator based power systems. These external grounding transformers are relatively ineffective for mitigating overvoltages in inverter based systems.

What is a self protection over voltage (SPOV) mechanism?

These mechanisms, referred to as Self Protection Over-Voltage (SPOV) mechanisms, have the added benefit of causing the inverter to cease to energize when the circuit voltage exceeds certain limits. The SPOV mechanisms thus can mitigate both ground-fault overvoltage (GFOV), and load-rejection overvoltage (LROV).

What is the maximum overvoltage of a 500 kW inverter?

Similarly, Fig. 14(b) demonstrates the overvoltages when the load pf is 0.9 and the apparent power is 463 kVA. This yields an active power output of 416.6 kW, and a GLR of 1.2 if the inverter output is kept constant at 500 kW. The observed maximum overvoltage in these experiment was close to 29%.



Berlin inverter overvoltage



[Analysis of transient overvoltages and Self Protection ...](#)

These mechanisms, referred to as Self Protection Over-Voltage (SPOV) mechanisms, have the added benefit of causing the inverter to cease to energize when the ...

[Request Quote](#)

Analysis of transient overvoltages and Self Protection Overvoltage ...

These mechanisms, referred to as Self Protection Over-Voltage (SPOV) mechanisms, have the added benefit of causing the inverter to cease to energize when the ...

[Request Quote](#)



[Inverter Overvoltage: Causes & Solutions Explained](#)

This article analyzes overvoltage faults in inverter voltage detection circuits. Inverter overvoltage refers to the DC bus voltage exceeding a safe threshold, risking component damage and ...

[Request Quote](#)

Subcycle overvoltage

The subcycle overvoltage condition describes the electrical generation fault mode that is associated with the inverter-based resources (IBR, like solar photovoltaics and wind turbines) ...

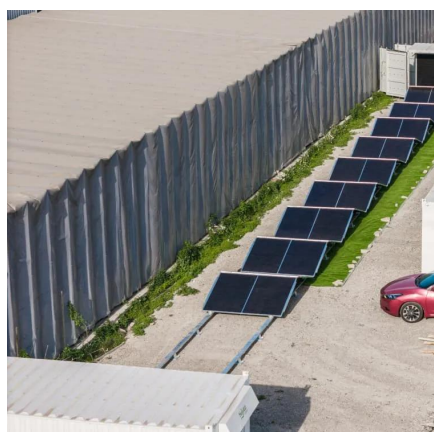
[Request Quote](#)



Berlin inverter overvoltage

Overvoltage protection devices (surge protection devices, or SPD for short) generate equipotential bonding between the connected conductors when excessive voltage is applied.

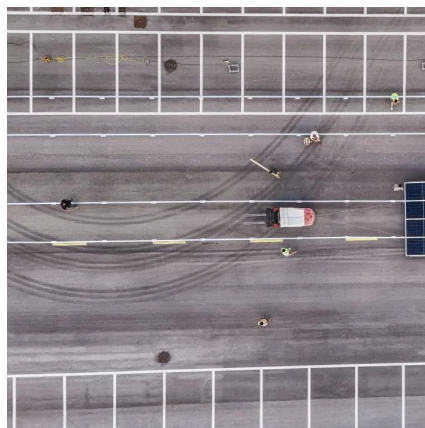
[Request Quote](#)



What causes inverter overvoltage errors? - Solar Power Store ...

Inverter overvoltage errors occur when the DC input voltage from your solar panels exceeds the inverter's maximum voltage rating. While your system may still operate ...

[Request Quote](#)



Over-voltage issues

Depending on how long the system is turned off due to the over-voltage issue, Solar Analytics will detect it either as a zero production fault or an under performance issue.

[Request Quote](#)



How does a centralized inverter



protect against overvoltage?

We test our centralized inverters under a wide range of conditions to ensure that the overvoltage protection works as intended. We simulate different overvoltage scenarios, ...

[Request Quote](#)



Knowledge ,Causes and solutions for inverter overvoltage fault

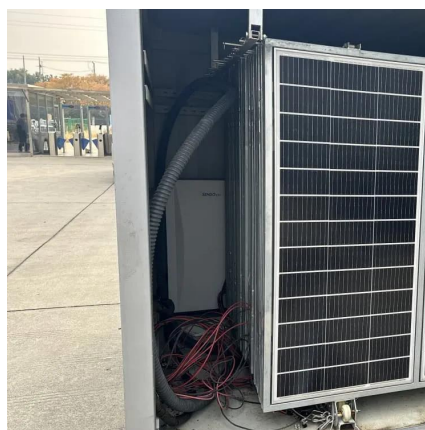
Overvoltage fault occurs when the inverter is in the parking state. This fault may be caused by a variety of reasons, including too high power supply voltage, too short deceleration time, and ...

[Request Quote](#)

Inverter Ground Fault Overvoltage Testing

We also present brief investigations into the effects of changing inverter overvoltage and overfrequency trip settings, the effect of anti-islanding controls, and the effect of delta- and wye ...

[Request Quote](#)



Troubleshooting OV Error in Inverters: Causes and Solutions

Understand overvoltage (OV) faults on Parker AC10, AC20, AC30, and AC690 drives. Learn common causes and practical solutions to protect your inverter system and ensure smooth ...

[Request Quote](#)

Subcycle overvoltage



The subcycle overvoltage condition describes the electrical generation fault mode that is associated with the inverter-based resources (IBR, like solar photovoltaics and wind turbines) and can cause a massive and instantaneous loss of electricity generation. When the overvoltage condition is detected, the IBR devices self-protect by disconnecting from the grid and can only come back online once the voltage returns to the design limits. In the meantime, a cascading failure

[Request Quote](#)





Contact Us

For catalog requests, pricing, or partnerships, please visit:

<https://www.energyinnovationday.pl>

Phone: +48 22 335 1273

Email: info@energyinnovationday.pl

Scan the QR code to contact us via WhatsApp.

