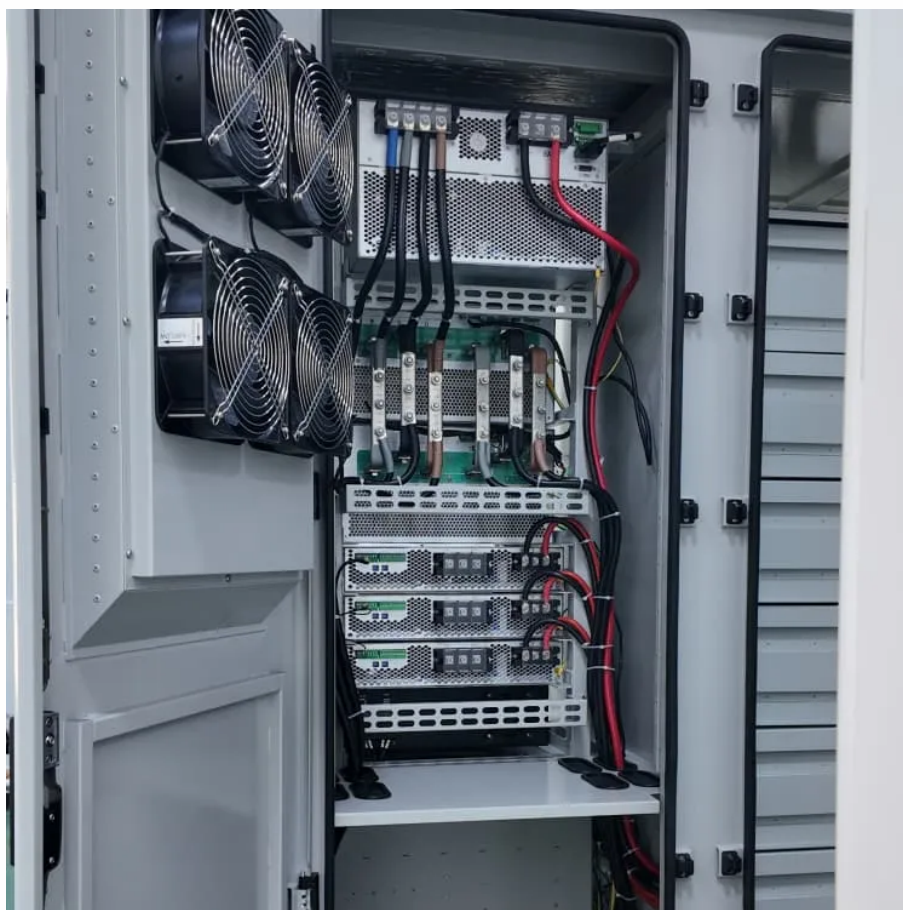




Belmopan Communications 5g base station installation time





Overview

How long does it take to install small cells for 5G?

Installing small cells for 5G can take just hours, rather than months or years. Thorough coverage mapping of a small cell deployment is recommended to safeguard performance for indoor or outdoor settings.

What is 5G Non-Standalone mode?

The time and resources required to install a 5G network have led to a measured transition from legacy wireless network technology. Non-standalone (NSA) mode allows a 5G radio network to utilize an LTE Core. The addition of new 5G radios and antennas to existing cell sites compresses deployment timelines.

How can a 5G tower installation company improve long-term reliability?

With the pressure building to quickly install new 5G network infrastructure, operators and 5G tower installation companies face challenges that are unique to next generation wireless. A combination of advanced test tools, automation, and training can accelerate 5G installation while improving long term reliability.

What is 5G network installation?

5G network installation includes the setup, deployment, and verification of new radios, antennas, fiber links, and power sources. The next-generation of radio access networks (RAN) also brings wholesale changes to fronthaul, mid-haul, and backhaul fiber installation to support split BBU architecture and network function virtualization (NFV).



Belmopan Communications 5g base station installation time



[Installation Criteria for a 5G Technology Cellular ...](#)

This paper thoroughly assesses the currently used 5G communication techniques, including mmWave, NOMA, and Massive ...

[Request Quote](#)

5G Installation

Installing small cells for 5G can take just hours, rather than months or years. Thorough coverage mapping of a small cell deployment is recommended to safeguard performance for indoor or ...

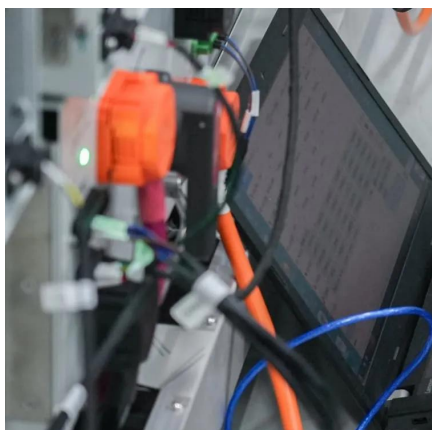
[Request Quote](#)



[5G Base Station Installation: Process and Best Practices](#)

A mind map about 5g base station installation: process and best practices. You can edit this mind map or create your own using our free cloud based mind map maker.

[Request Quote](#)



[Process of Installing a Base Transceiver Station ...](#)

Installing a Base Transceiver Station (BTS) is a critical step in building mobile communication networks. Here's a step-by-step guide to ...

[Request Quote](#)



Complete Guide to 5G Base Station Construction , Key Steps, ...

Explore how 5G base stations are built--from site planning and cabinet installation to power systems and cooling solutions. Learn the essential components, technologies, and ...

[Request Quote](#)



[Gateway and Base Station Installation Guide](#)

Installing a Gateway or Base Station y or Base Station requires the same steps. The only difference is for a gateway using the antenna mounted to the enclosure

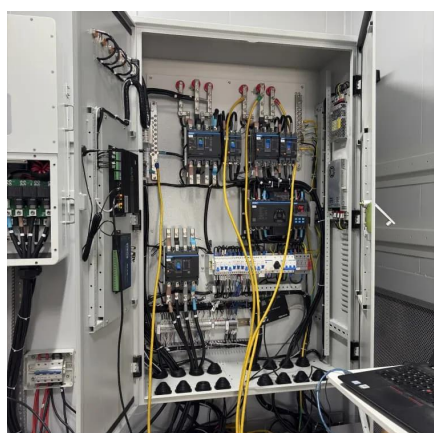
[Request Quote](#)



Installation Criteria for a 5G Technology Cellular Base Station

This paper thoroughly assesses the currently used 5G communication techniques, including mmWave, NOMA, and Massive MIMO. Also, this paper gives an overview of 6G ...

[Request Quote](#)



5g installation



Here's a detailed technical explanation of the 5G installation process: 1. Site Selection: * Identifying suitable locations for 5G base stations is crucial. These locations ...

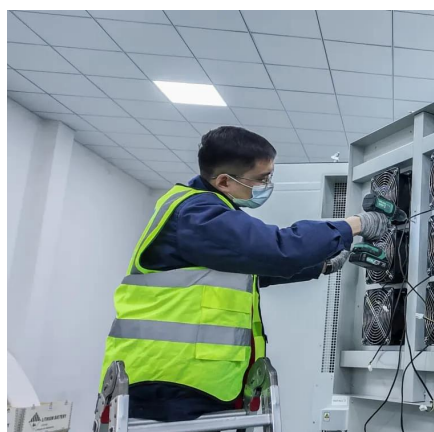
[Request Quote](#)



[Complete Guide to 5G Base Station Construction](#)

Explore how 5G base stations are built--from site planning and cabinet installation to power systems and cooling solutions. Learn the ...

[Request Quote](#)



[Process of Installing a Base Transceiver Station \(BTS\)](#)

Installing a Base Transceiver Station (BTS) is a critical step in building mobile communication networks. Here's a step-by-step guide to the process:

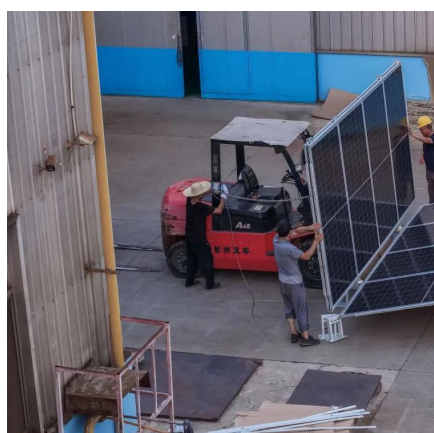
[Request Quote](#)



[Base Station Installation & Maintenance Test Solutions](#)

To synchronize the time between base stations among 5G networks, the Precision Time Protocol (PTP) is in common use, which periodically distributes time stamps from the grand master.

[Request Quote](#)



5g network installation



Here is a detailed technical explanation of the 5G network installation process: Site Selection: Identify suitable locations for 5G base stations or small cells. These could be ...

[Request Quote](#)



[Comprehensive 5G Installation and Maintenance Solution](#)

In 5G TDD plays an important role because large chunks of spectrum are available in the C-band and mmwave, which only support TDD based communications. In the TDD scheme, both DL ...

[Request Quote](#)

5G Installation

Installing A 5G Network5G Tower Installation5G Installation Challenges5G Network Maintenance and OptimizationTools For 5G Installation5G network installation involves months of planning and preparation even before the first radio or antenna is connected. This is especially true for ground-up 5G mobile tower installation with complex construction tasks layered upon 5G hardware and fiber installation and commissioning. 1. Fiber installation is comp...See more on viavisolutions Anritsu



Base Station Installation & Maintenance Test Solutions - Anritsu

To synchronize the time between base stations among 5G networks, the Precision Time Protocol (PTP) is in common use, which periodically distributes time stamps from the grand master.

[Request Quote](#)



Contact Us

For catalog requests, pricing, or partnerships, please visit:

<https://www.energyinnovationday.pl>

Phone: +48 22 335 1273

Email: info@energyinnovationday.pl

Scan the QR code to contact us via WhatsApp.

