



# Belgrade Photovoltaic Energy Storage Container with Ultra-Large Capacity





## Belgrade Photovoltaic Energy Storage Container with Ultra-Large Capacity



### 6 Reasons to Visit Belgrade--The Affordable 'White City' of the ...

Discover Belgrade--an affordable European gem where East meets West, blending rich history, lively streets, and a dynamic café culture.

[Request Quote](#)

### [Belgrade - Travel guide at Wikivoyage](#)

Belgrade (Serbian: ????????, Beograd) is the capital of the Republic of Serbia. It stands at the confluence of the Danube and Sava rivers, where the rolling Pannonian Plain fetches up ...

[Request Quote](#)



### [Belgrade, Serbia: All You Must Know Before You Go \(2026\)](#)

Belgrade Tourism: Tripadvisor has 188,266 reviews of Belgrade Hotels, Attractions, and Restaurants making it your best Belgrade resource.

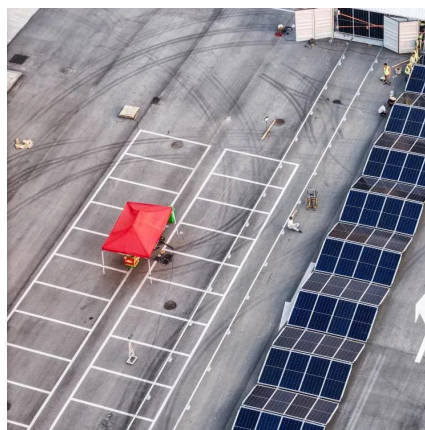
[Request Quote](#)

### [Belgrade: History, Culture, and Timeless Charm](#)

Nestled at the confluence of two mighty rivers - the Sava and Danube - Belgrade stands as Serbia's beating heart and largest metropolis. This ancient city, a sprawling tapestry of old and ...



[Request Quote](#)



## Sights , City of Belgrade

Welcome to the official website of the city of Belgrade. Find information about city authorities and services, important events and life in Belgrade

[Request Quote](#)

## Belgrade

Many weekend visitors--particularly from Bosnia and Herzegovina, Croatia and Slovenia --prefer Belgrade nightlife to that of their own capitals due to its perceived friendly atmosphere, plentiful ...

[Request Quote](#)



## [15 best things to do in Belgrade \(Serbia\): Our choice](#)

Wondering about things to do in the capital of Serbia? Here is our comprehensive guide to 1-3 days in Belgrade dotted with our favorite places to eat and drink coffee

[Request Quote](#)

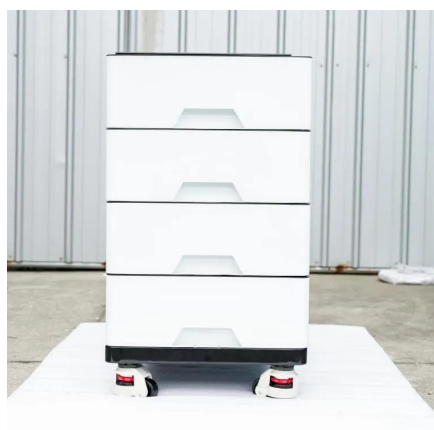
## [Belgrade , History, Population, Map, &](#)



## [Facts , Britannica](#)

Belgrade, city, capital of Serbia. It lies at the confluence of the Danube and Sava rivers in the north-central part of the country. It is located at the convergence of three ...

[Request Quote](#)



## **Belgrade**

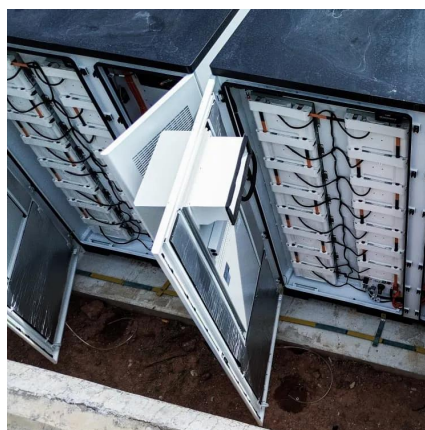
Belgrade is the capital and largest city of Serbia. It is located at the confluence of the Sava and Danube rivers and at the crossroads of the Pannonian Plain a

[Request Quote](#)

## **Belgrade travel**

Explore the Kalemegdan Fortress, lively waterfront, buzzing nightlife and Balkan cuisine in our Belgrade travel guide. Find expert tips and top sights.

[Request Quote](#)





## Contact Us

---

For catalog requests, pricing, or partnerships, please visit:

<https://www.energyinnovationday.pl>

Phone: +48 22 335 1273

Email: [info@energyinnovationday.pl](mailto:info@energyinnovationday.pl)

Scan the QR code to contact us via WhatsApp.

