



# Belgrade 50W Solar Panel Specifications





## Overview

---

Technical parameter Maximum Power(W) 50W Optimum Power Voltage(Vmp) 18.72V Optimum Operating Current(Imp) 2.67A Open Circuit Voltage(Voc) 22.83V Short Circuit Current(Isc) 2.94A Mechanical Characteristics Cell Type Monocrystalline 125x62.5mm No of Cell 36 (4x9pcs) Dimensions.

Technical parameter Maximum Power(W) 50W Optimum Power Voltage(Vmp) 18.72V Optimum Operating Current(Imp) 2.67A Open Circuit Voltage(Voc) 22.83V Short Circuit Current(Isc) 2.94A Mechanical Characteristics Cell Type Monocrystalline 125x62.5mm No of Cell 36 (4x9pcs) Dimensions.

Quick Summary: Discover the technical specs of the Belgrade 50W solar panel and how it fits into residential, outdoor, and small-scale commercial energy solutions. Learn why this compact module is gaining popularity in 2024. "The foldable design makes it a camper's dream - I power my RV fridge for.

Reliable quality leads to a better sustainability even in harsh environment like desert, farm and coastline. High module conversion efficiency (up to 15.55%), through innovative manufacturing technology. Advanced glass and solar cell surface texturing allow for excellent performance in low-light.

A 50-watt solar panel is a solar photovoltaic (PV) panel designed to generate electrical energy from sunlight. These panels are relatively small and often used when only a modest amount of power is needed. As a comparison, businesses or large residential homes prefer to install 600-watt solar.

A project-ready B2B solution for commercial off-grid power. This durable 50W 24V Monocrystalline solar panel is engineered for professional and telecommunications installations.

The BSP line of rugged, outdoor solar modules offer efficient solar cell technology combined with industrial design and quality construction. The impact resistant glass surface and robust anodized aluminum frame mount to our line of optional pole mount brackets. Power from our solar modules is.

Technical parameter Maximum Power(W) 50W Optimum Power Voltage(Vmp) 18.72V Optimum Operating Current(Imp) 2.67A Open Circuit Voltage(Voc) 22.83V



Short Circuit Current(Isc) 2.94A Mechanical Characteristics Cell Type  
Monocrystalline 125x62.5mm No of Cell 36 (4x9pcs) Dimensions 636x554x25mm  
Weight.



## Belgrade 50W Solar Panel Specifications



### [BSP50-12, BSP Series 50 Watt Solar Panel](#)

Power from our solar modules is delivered through our integrated UV resistant cable and weatherproof junction box. BSP Series solar modules are suited for remote telemetry, SCADA, ...

[Request Quote](#)

### [Monocrystalline Solar Panel 50W PMS50W Datasheet](#)

Low-light Performance Advanced glass and solar cell surface texturing allow for excellent performance in low-light environments.

[Request Quote](#)



### **50w mono datasheet**

3.03 -0.41%/ -0.31%/ +0.05%/ 18.43%  
600VDC(IEC)  $\pm 3\%$  Germany A grade Solarworld  
solar cell No. of cells and connections Module  
dimension 36(3X12) 650\*505\*25mm Weight Certi  
cation

[Request Quote](#)

### [50W Semi-Flexible Solar Panel with Integrated Charge ...](#)

The 50W solar panel includes semi-flexible fiberglass backing, whole-cell design for maximum power and reliability, and an integrated PowerBoost charge controller to provide the greatest ...



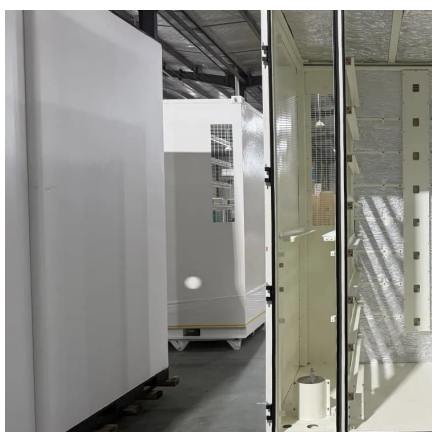
[Request Quote](#)



### [50W 24V Monocrystalline Solar Panel , SLD Tech](#)

A project-ready B2B solution for commercial off-grid power. This durable 50W 24V Monocrystalline solar panel is engineered for professional and telecommunications installations.

[Request Quote](#)



### **Belgrade 50W Solar Panel Complete Specifications Practical ...**

Quick Summary: Discover the technical specs of the Belgrade 50W solar panel and how it fits into residential, outdoor, and small-scale commercial energy solutions.

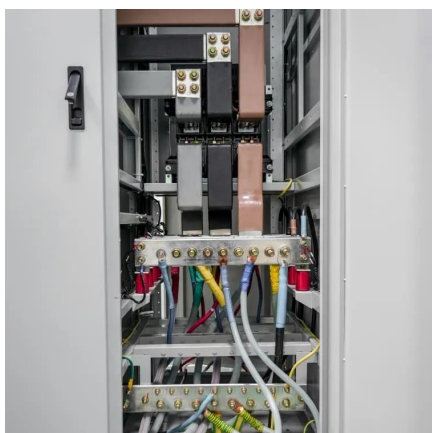
[Request Quote](#)



### [BSP50-12, BSP Series 50 Watt Solar Panel](#)

Power from our solar modules is delivered through our integrated UV resistant cable and weatherproof junction box. BSP Series solar modules ...

[Request Quote](#)



### [50W 24V Monocrystalline Solar Panel ,](#)



## [SLD Tech](#)

A project-ready B2B solution for commercial off-grid power. This durable 50W 24V Monocrystalline solar panel is engineered for professional and ...

[Request Quote](#)



### **Mono Solar Panel 50W**

STC NOCT Irradiance 1000W/m<sup>2</sup> Irradiance 800W/m<sup>2</sup> Cell Temperature 25°C Ambient Temperature 25°C AM=1.5 AM=1.5

[Request Quote](#)

## [50 Watt Solar Panels Technical Specs & Installation](#)

Solar panel wattage measures its power output capacity. 50 watt solar panels are used for small energy needs. Learn about technical specs, applications & more!

[Request Quote](#)



### **Mono-Crystalline 50W Solar Panel**

Technical parameter Maximum Power(W) 50W Optimum Power Voltage(Vmp) 18.72V Optimum Operating Current(Imp) 2.67A Open Circuit Voltage(Voc) 22.83V Short Circuit Current(Isc) ...

[Request Quote](#)

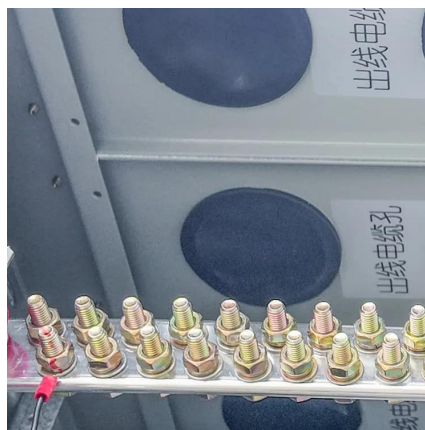
## [50W Monocrystalline Solar Panels:](#)



## [Electrical ...](#)

The document describes a 50W monocrystalline solar panel with specifications including its electrical characteristics, temperature ...

[Request Quote](#)



## [50W Monocrystalline Solar Panels: Electrical Specifications](#)

The document describes a 50W monocrystalline solar panel with specifications including its electrical characteristics, temperature coefficients, mechanical characteristics, and optional ...

[Request Quote](#)



## Contact Us

---

For catalog requests, pricing, or partnerships, please visit:

<https://www.energyinnovationday.pl>

Phone: +48 22 335 1273

Email: [info@energyinnovationday.pl](mailto:info@energyinnovationday.pl)

Scan the QR code to contact us via WhatsApp.

