



# Battery station cabinet parameter setting requirements





## Overview

---

Minimum cabinet height = Rack height (to top of rail) + Battery height + Space above battery (12" ideal) + Charger height + 6" (for space above charger)  
Chargers need room to breathe and batteries need extra room above for maintenance (watering and testing).

Minimum cabinet height = Rack height (to top of rail) + Battery height + Space above battery (12" ideal) + Charger height + 6" (for space above charger)  
Chargers need room to breathe and batteries need extra room above for maintenance (watering and testing).

(1) Batteries of the unsealed type shall be located in enclosures with outside vents or in well ventilated rooms and shall be arranged so as to prevent the escape of fumes, gases, or electrolyte spray into other areas. (2) Ventilation shall be provided to ensure diffusion of the gases from the.

VRLA Batteries have specific requirements for compliance with the building codes, fire codes, OSHA and may be subject to additional requirements from Authorities having Jurisdiction (AHJ). Learn the requirements for VRLA batteries and how to be compliant with current regulation. Also learn the.

Batteries of the unsealed type shall be located in enclosures with outside vents or in well ventilated rooms and shall be arranged so as to prevent the escape of fumes, gases, or electrolyte spray into other areas. Ventilation shall be provided to ensure diffusion of the gases from the battery and.

Do you need a sign for a stationary battery system?

IFC 608.7; NPFA 52.3.8 Approved signs are required for Entrances to rooms and buildings with stationary battery systems of all technologies. Signs need to state the room has "energized battery systems, energized electrical circuits, the battery.

The battery rooms must be adequately ventilated to prohibit the build-up of hydrogen gas. During normal operations, off gassing of the batteries is relatively small. However, the concern is elevated during times of heavy recharge or the batteries, which occur immediately following a rapid and deep.



To assure safe operating conditions in and around the lift truck battery room, it is important to comply with all relevant regulations. The BHS Battery Room Survey is the perfect tool to help determine your battery room compliance with OSHA and other regulating bodies. It provides a checklist to.



## Battery station cabinet parameter setting requirements



### [Maintaining Compliance in the VRLA Battery Room](#)

Learn the requirements for VRLA batteries and how to be compliant with current regulation. Also learn the various rack compliance requirements and best practices including IBC, UBC, NEBS, ...

[Request Quote](#)

### **1926.441**

Batteries of the unsealed type shall be located in enclosures with outside vents or in well ventilated rooms and shall be arranged so as to prevent the escape of fumes, gases, or ...

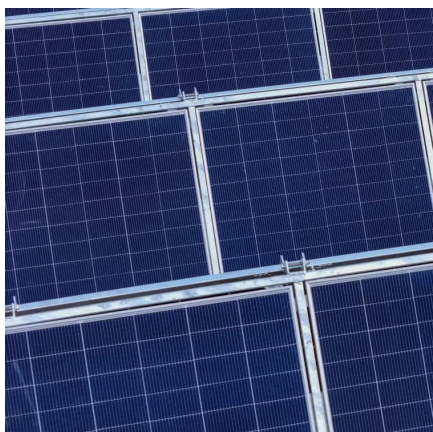
[Request Quote](#)



### **Designing Industrial Battery Rooms: Fundamentals and Standards**

Industrial battery rooms require careful design to ensure safety, compliance, and operational efficiency. This article covers key design considerations and relevant standards.

[Request Quote](#)



### **eCFR :: 29 CFR 1926.441 -**

§ 1926.441 Batteries and battery charging. (a) General requirements. (1) Batteries of the unsealed type shall be located in enclosures with outside vents or in well ventilated rooms and shall be ...

[Request Quote](#)



### [Tips for Designing Battery Cabinets/Enclosures , SBS Battery](#)

Tips on how to design a custom enclosure to house and protect your battery system.

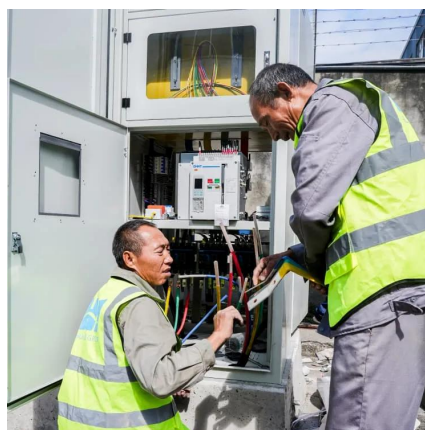
[Request Quote](#)



### [Battery Room Design Aspects , PDF , Electrical ...](#)

This document outlines design requirements for battery rooms containing vented lead acid batteries. It specifies that battery rooms must be properly ...

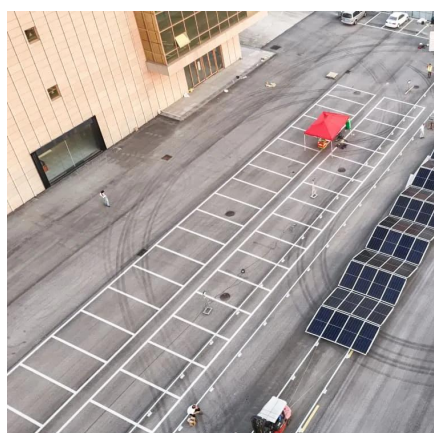
[Request Quote](#)



### [Battery Room Design Aspects , PDF , Electrical Substation](#)

This document outlines design requirements for battery rooms containing vented lead acid batteries. It specifies that battery rooms must be properly ventilated, include safety equipment ...

[Request Quote](#)

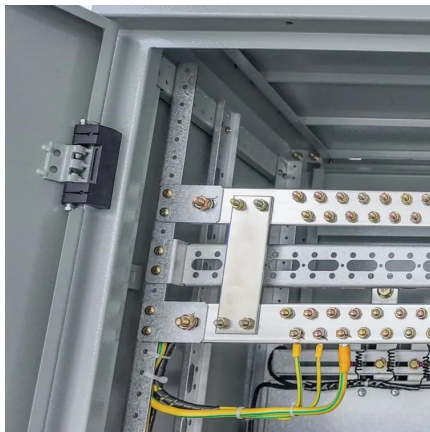
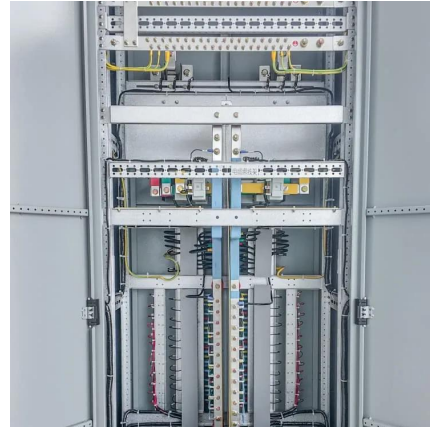


### [NFPA 70E Battery and Battery Room ...](#)



Safety requirements for batteries and battery rooms can be found within Article 320 of NFPA 70E

[Request Quote](#)



## Battery Room Ventilation and Safety

Many of the model building codes and recognized standards such as IEEE, OSHA, NEC, and NFPA Life Safety Codes outline the requirements for the design and installation of battery rooms.

[Request Quote](#)

## Battery station cabinet parameter setting requirements

The battery management system is considered to be a functionally distinct component of a battery energy storage system that includes active functions necessary to protect the battery from ...

[Request Quote](#)



## NFPA 70E Battery and Battery Room Requirements , NFPA

Safety requirements for batteries and battery rooms can be found within Article 320 of NFPA 70E

[Request Quote](#)

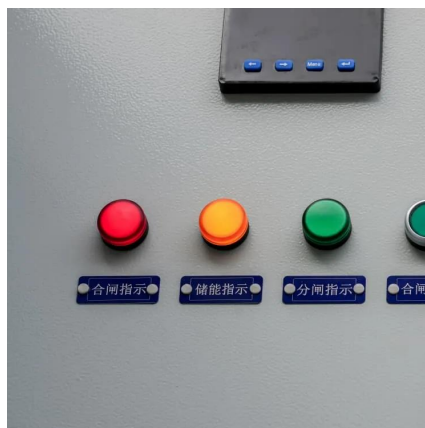
## Battery Charging Room Regulations



## and Safety Information , BHS

The BHS Battery Room Survey is the perfect tool to help determine your battery room compliance with OSHA and other regulating bodies. It provides a checklist to use while evaluating a ...

[Request Quote](#)





## Contact Us

---

For catalog requests, pricing, or partnerships, please visit:

<https://www.energyinnovationday.pl>

Phone: +48 22 335 1273

Email: [info@energyinnovationday.pl](mailto:info@energyinnovationday.pl)

Scan the QR code to contact us via WhatsApp.

