



Battery energy storage safety distance





Battery energy storage safety distance



Energy Storage: Safety FAQs

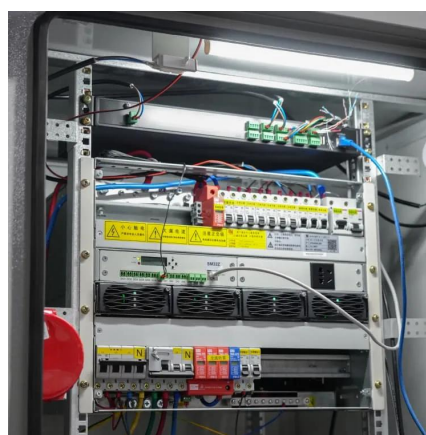
Battery energy storage systems are currently deployed and operational in all environments and settings across the United States, from the freezing ...

[Request Quote](#)

Siting and Safety Best Practices for Battery Energy Storage ...

For the purposes of CPCN review and approval, we recommend that future CPCN applicants with battery storage systems be required to submit plans for battery siting, safety, and ...

[Request Quote](#)



Battery Energy Storage Systems: The Critical Role of Site Layout ...

Wärtsilä, a global leader in innovative technologies for energy markets, recommends approximately 10 feet between containers for ease of maintenance and to ensure workers and ...

[Request Quote](#)

Essential Safety Distances for Large-Scale Energy Storage Power

Discover the key safety distance requirements for large-scale energy storage power stations. Learn about safe layouts, fire protection measures, and optimal equipment ...



[Request Quote](#)



[Key Safety Standards for Battery Energy Storage ...](#)

Learn about key safety standards for Battery Energy Storage Systems (BESS) and how innovations like immersion cooling enhance ...

[Request Quote](#)

[What is the explosion-proof distance of the energy ...](#)

Based on the title, the explosion-proof distance of the energy storage power station refers to the safe distance required to minimize the ...

[Request Quote](#)



[Key Safety Standards for Battery Energy Storage Systems](#)

Learn about key safety standards for Battery Energy Storage Systems (BESS) and how innovations like immersion cooling enhance safety and reliability.

[Request Quote](#)



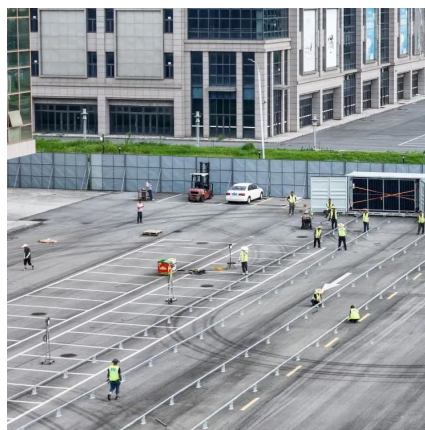
Safety Distance of Energy Storage



Containers: What You Need ...

Or why your "quick fix" of squeezing extra battery units into a tight space might be a one-way ticket to Regretsville? Let's talk about the safety distance of energy storage ...

[Request Quote](#)



Battery Energy Storage Systems: Main Considerations for Safe

Ensure use of Personal Protective Equipment (PPE) including self-contained breathing apparatuses to protect against hazardous air emissions. Set an isolation zone for ...

[Request Quote](#)



EG4 BESS Spacing

What is the explosion-proof distance of the energy storage power

Based on the title, the explosion-proof distance of the energy storage power station refers to the safe distance required to minimize the risk of injury or damage during an ...

[Request Quote](#)



Safety distance of energy storage cabin

Station Layout: Within the energy storage power station, office, accommodation, and duty areas should maintain necessary safety distances from battery prefabricated ...

[Request Quote](#)



The following document clarifies BESS (Battery Energy Storage System) spacing requirements for the EG4 WallMount batteries / rack mount six slot battery cabinet installations.

[Request Quote](#)



Energy Storage: Safety FAQs

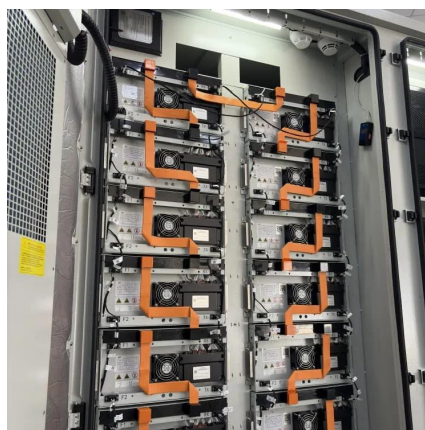
Battery energy storage systems are currently deployed and operational in all environments and settings across the United States, from the freezing temperatures of Alaska to the deserts of ...

[Request Quote](#)

[Battery Energy Storage Systems: Main ...](#)

Ensure use of Personal Protective Equipment (PPE) including self-contained breathing apparatuses to protect against hazardous air ...

[Request Quote](#)





Contact Us

For catalog requests, pricing, or partnerships, please visit:

<https://www.energyinnovationday.pl>

Phone: +48 22 335 1273

Email: info@energyinnovationday.pl

Scan the QR code to contact us via WhatsApp.

