



Battery cabinet installation location in monitoring room





Overview

In this guide, we will introduce the correct installation steps after receiving the lithium battery energy storage cabinet, and give the key steps and precautions for accurate installation. Proper and compliant installation ensures optimal performance and increases.

In this guide, we will introduce the correct installation steps after receiving the lithium battery energy storage cabinet, and give the key steps and precautions for accurate installation. Proper and compliant installation ensures optimal performance and increases.

To obtain complete information for your project, please contact our friendly staff in person or over the phone at Planning (626) 384-5450 or Building & Safety (626) 384-5460, Business hours (Monday - Thursday from 7:00 a.m. to 6:00 p.m.). Planning clearance is required prior to submission to.

A poorly installed cabinet can turn your clean energy dreams into a smoky nightmare (literally – lithium-ion batteries don't do well with improvisation). Recent data shows that 40% of battery-related fires trace back to installation errors – that's like building a swimming pool without checking for.

Monitoring in high, low or adjacent locations is simplified by remote mounting the sensor head using 4 conductor cable. The automatic uploading of variables, alarm values and sensor information when a sensor is plugged in greatly simplifies installation and maintenance. Transportable calibration.

Industrial battery rooms require careful design to ensure safety, compliance, and operational efficiency. This article covers key design considerations and relevant standards. 1. Space Planning and Layout 900mm min Battery Room Layout 1200mm Primary Access End Access 1000mm Battery Racks Industrial.

In this guide, we will introduce the correct installation steps after receiving the lithium battery energy storage cabinet, and give the key steps and precautions for accurate installation. Proper and compliant installation ensures optimal performance and increases safety and longevity. First of.

Section 480.9 (E) requires any personnel doors intended for entrance to, and



egress from a battery room, to open in the direction of egress and be equipped with listed panic hardware. Below is a preview of the NEC®. See the actual NEC® text at NFPA.ORG for the complete code section. Once there.



Battery cabinet installation location in monitoring room



[IR N-4: Modular Battery Energy Storage Systems: 2022 CBC ...](#)

CFC requires a fire detection system where the installation is in rooms, indoor areas, and walk-in units. The owner must acknowledge to DSA in writing if they choose to omit the fire detection ...

[Request Quote](#)

How to correctly install lithium battery energy storage cabinet?

In this guide, we will introduce the correct installation steps after receiving the lithium battery energy storage cabinet, and give the key steps and precautions for accurate ...

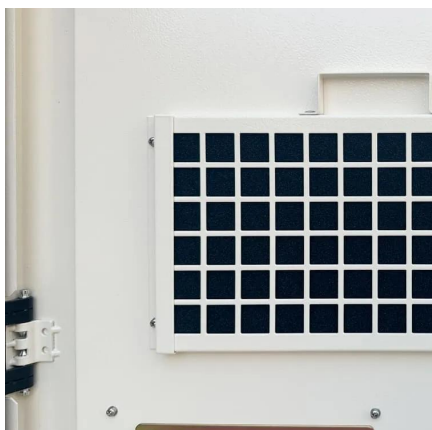
[Request Quote](#)



[Battery Room Design Requirements - PAKTECHPOINT](#)

The battery room shall be located in a way that provides access for lifting equipment to be used during initial installation and future maintenance operations. The location shall be as free from ...

[Request Quote](#)



Energy Storage Battery Cabinet Installation: Your Roadmap to ...

Let's face it - energy storage battery cabinets aren't exactly the Beyoncé of renewable energy systems. But just like backup dancers, they're critical to the show.



[Request Quote](#)



480.9 Battery Locations.

Working space shall be measured from the edge of the battery cabinet, racks, or trays. For battery racks, there shall be a minimum clearance of 25 mm (1 in.) between a cell container and any ...

[Request Quote](#)

[Battery Room Hydrogen Monitors for NFPA 111 Compliance](#)

Monitoring in high, low or adjacent locations is simplified by Duct Mount remote mounting the sensor head using 4 conductor cable. The automatic uploading of variables, alarm values and ...

[Request Quote](#)



[NFPA 70E Battery and Battery Room Requirements , NFPA](#)

Safety requirements for batteries and battery rooms can be found within Article 320 of NFPA 70E

[Request Quote](#)



[NFPA 70E Battery and Battery Room ...](#)



Safety requirements for batteries and battery rooms can be found within Article 320 of NFPA 70E

[Request Quote](#)



Designing Industrial Battery Rooms: Fundamentals and Standards

Industrial battery rooms require careful design to ensure safety, compliance, and operational efficiency. This article covers key design considerations and relevant standards.

[Request Quote](#)



Battery Cabinet

Install the Battery Cabinet following local building requirements and applicable codes. Plan the location of the Battery Cabinet site ahead of time, taking into consideration the requirements ...

[Request Quote](#)



Microsoft Word

Structural requirements: Identify if the ESS will be wall or floor-mounted. Provide manufacturer's anchorage detail. A battery(s) installed at the same location, weighing > 400 ...

[Request Quote](#)





Contact Us

For catalog requests, pricing, or partnerships, please visit:

<https://www.energyinnovationday.pl>

Phone: +48 22 335 1273

Email: info@energyinnovationday.pl

Scan the QR code to contact us via WhatsApp.

