



Battery cabinet dimensions for 16 batteries





Overview

CAT 30 keyed door lock. Overall dimensions measure 22" wide by 10" high by 8 1/2" deep. Four 1/2" and 3/4" EMT conduit knockouts are located on the sides and back. The battery cabinet meets NFPA 72 (1-5.2.9) and National Electric Code requirements.

CAT 30 keyed door lock. Overall dimensions measure 22" wide by 10" high by 8 1/2" deep. Four 1/2" and 3/4" EMT conduit knockouts are located on the sides and back. The battery cabinet meets NFPA 72 (1-5.2.9) and National Electric Code requirements.

Equipped with a complete interior and exterior durable red or black powder coat. The front cover features a CAT 30 keyed door lock and lift-away hinge. Overall dimensions measure 22" wide by 10" high by 8.5" deep or 30" wide by 10" high by 8.5" deep or. Four 0.5" and 0.75" EMT conduit knockouts are.

CAT 30 keyed door lock. Overall dimensions measure 22" wide by 10" high by 8 1/2" deep. Four 1/2" and 3/4" EMT conduit knockouts are located on the sides and back. The battery cabinet meets NFPA 72 (1-5.2.9) and National Electric Code requirements.

The Model BC Battery Cabinet is UL Listed and finished in textured red or beige to match the various Gamewell-FCI control panels. The cabinet will house up to four (4) model B-31 or two (2) model B-55 batteries. The heavy duty cabinet, constructed of 16 gauge steel, is phosphate treated and primed.

A rack measuring 47.24" L x 23" D cannot be installed in a 48" L x 24" D enclosure. The dimensions of the cabinets are the outside dimensions, so it is important to take into account the thickness of the material and body stiffeners that are attached to the sides and back of the cabinet for.

Battery cabinet that includes Lithium-ion batteries, Battery Management System (BMS), switchgear, power supply, and communication interface. Battery cabinet that includes Lithium-ion batteries, Battery Management System (BMS), switchgear, power supply, and communication interface. Schneider.

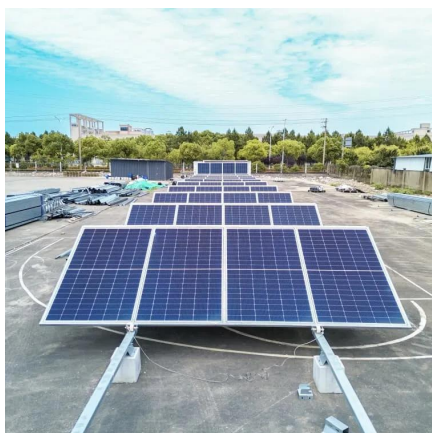
Battery Strings: The cabinet can accommodate two (2) 288 VDC battery strings.



Each string is composed of four (4) trays of five (5) 12 VDC batteries each and a single tray of four (4) 12VDC batteries for a resulting 288VDC battery string. Only cabinets with Flame Retardant Batteries are suitable.



Battery cabinet dimensions for 16 batteries



[755-00086 R02 BC16 MITSUBISHI MANUAL](#)

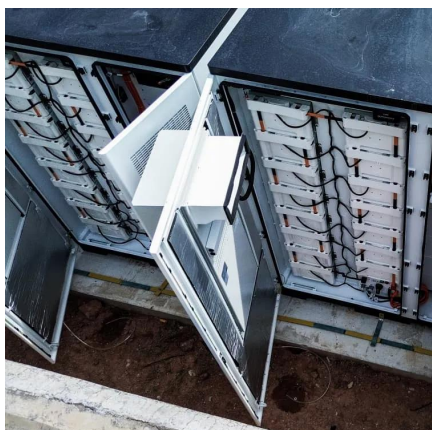
The BC16 battery cabinet is equipped with four casters, two swivel types in front and two rigid types in the back. Move the cabinet into the desired location and lock the front casters.

[Request Quote](#)

Shipping Weights and Dimensions

NOTE: The battery cabinets are shipped without batteries. The battery modules are shipped separately per the chosen configuration with 10, 13, 16, or 17 battery modules.

[Request Quote](#)



LIBSESMG16IEC

Battery cabinet that includes Lithium-ion batteries, Battery Management System (BMS), switchgear, power supply, and communication interface.

[Request Quote](#)

What Are the Key Considerations in Battery Rack Design and Dimensions

Battery rack design and dimensions are critical aspects of effective energy storage solutions, influencing everything from safety to efficiency. Understanding the key considerations in ...



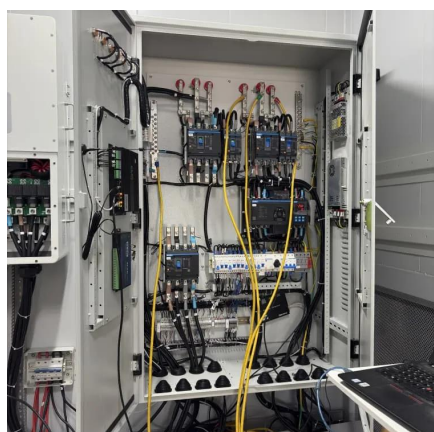
[Request Quote](#)



[SPECIFICATIONS FEATURES The BCA Battery Cabinet is ...](#)

With the ability to be securely wall mounted, these cabinets allow easy access to your batteries for quick maintenance while reducing the risk of unnecessary power drain, interference or ...

[Request Quote](#)



CK-10 Battery Cabinet

The CK Series battery cabinets are designed to be integrated with top terminal, Valve Regulated Lead Acid (VRLA) batteries for Uninterruptible Power Supply (UPS) applications. These ...

[Request Quote](#)



[Battery Cabinet Dimensions Guide , Huijue Group E-Site](#)

By 2030, we'll likely see cabinets that autonomously optimize their footprint using liquid cooling manifolds and foldable graphene composites. As you review your next battery ...

[Request Quote](#)



Battery Cabinets



CAT 30 keyed door lock. Overall dimensions measure 22" wide by 10" high by 8 1/2" deep. Four 1/2" and 3/4" EMT conduit knockouts are located on the sides and back. The battery cabinet ...

[Request Quote](#)



[What Are the Key Considerations in Battery Rack ...](#)

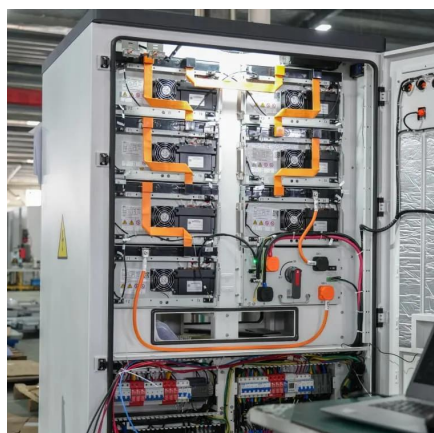
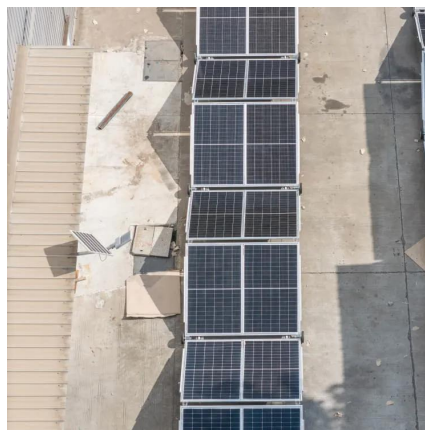
Battery rack design and dimensions are critical aspects of effective energy storage solutions, influencing everything from safety to efficiency. ...

[Request Quote](#)

[Tips for Designing Battery Cabinets/Enclosures , SBS Battery](#)

The dimensions of the cabinets are the outside dimensions, so it is important to take into account the thickness of the material and body stiffeners that are attached to the sides and back of the ...

[Request Quote](#)



[BC Series, Batteries and Cabinets Data Sheet](#)

The cabinet will house up to four (4) model B-31 or two (2) model B-55 batteries. The heavy duty cabinet, constructed of 16 gauge steel, is phosphate treated and primed with zinc chromate ...

[Request Quote](#)



Contact Us

For catalog requests, pricing, or partnerships, please visit:

<https://www.energyinnovationday.pl>

Phone: +48 22 335 1273

Email: info@energyinnovationday.pl

Scan the QR code to contact us via WhatsApp.

