



Battery cabinet automatic disengagement device





Overview

After 12V signal is removed, device senses low battery voltage and automatically disconnects devices. Low voltage setting can be used in conjunction with Timer Disconnect. Low voltage will disconnect devices prior to preset time to preserve battery power.

After 12V signal is removed, device senses low battery voltage and automatically disconnects devices. Low voltage setting can be used in conjunction with Timer Disconnect. Low voltage will disconnect devices prior to preset time to preserve battery power.

Disclosed is an automatic engagement and disengagement device (100), comprising an active device (101), which has an actuating mechanism and a clamping claw (103), wherein where the active device (101) does not engage with a passive device (102), the clamping claw (103) can be driven by the.

Check each product page for other buying options. Shop products from small business brands sold in Amazon's store. Discover more about the small businesses partnering with Amazon and Amazon's commitment to empowering them. Learn more [IMAYCC Kill Switch for Car, 12V Remote Battery Disconnect Switch](#).

That's where our KISSLING battery disconnect switches come in. Trusted by industries and commercial vehicle operators alike, these switches are built to keep your team safe, your systems protected, and your assets secure. By cutting power during maintenance, they not only help prevent damage to.

12V signal triggers relay to connect battery power to devices. After 12V signal is removed, device senses low battery voltage and automatically disconnects devices. Low voltage setting can be used in conjunction with Timer Disconnect. Low voltage will disconnect devices prior to preset time to.

Can be configured to be used as one of the following battery saving products:
Timer Disconnect 12V signal triggers relay to connect battery power to devices. When signal is removed the timer is activated and will disconnect devices after a preset time. Timer ranges from 15 minutes to 4 hours Low.

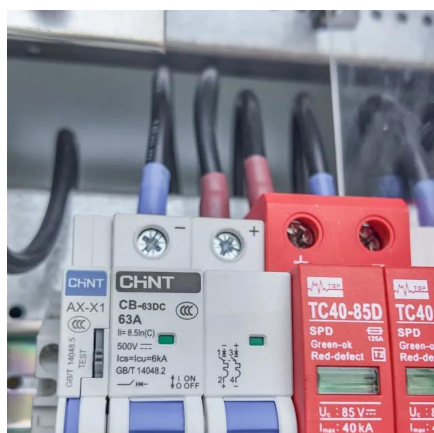
Low voltage disconnects (LVDs) are essential components in protecting batteries



from excessive discharge and maintaining reliable power in critical vehicle and equipment systems. These automatic disconnect switches monitor battery voltage in real time and remove non-essential auxiliary loads when.



Battery cabinet automatic disengagement device



Main Battery Change

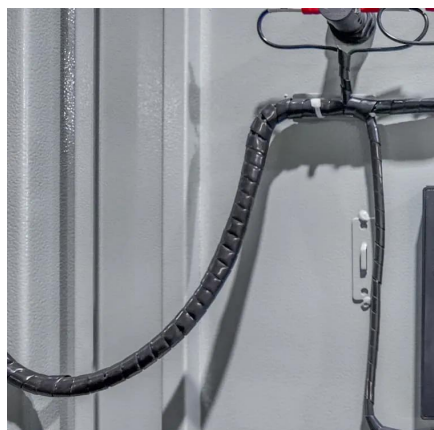
Going to change the service battery in my 15 V40cc D2. Anything I need to be ware of or look out for ??

[Request Quote](#)

[Battery Disconnect Switches , TE Connectivity](#)

Our High Voltage Battery Disconnect Switches isolate power during maintenance or emergencies, confirming technicians can confidently work ...

[Request Quote](#)



[Automatic engagement and disengagement device](#)

When the device (100) is used in an electrical power delivery device, the automatic engagement and automatic disengagement of a plug (104) and a socket (105) can be achieved without the

[Request Quote](#)

Low battery charge message

The low battery charge message relates to the main battery. On vehicles with stop/start systems and intelligent alternators, the vehicle battery is designed to operate at ...

[Request Quote](#)



[Low battery charge error , Volvo V40 Forums](#)

Hello everyone, I just bought my first car, a 2014 Volvo V40 T3, and a warning appears on the dashboard that says 'low battery charge.' The car is recently

[Request Quote](#)



Battery

How do you charge the small battery - I charge the main battery to show full, but the auxiliary battery loses charge if listening to the radio when stationary. podger

[Request Quote](#)



Battery issues

I've had both batteries replaced (with the correct models), done a 100 mile trip, overnight smart battery charge, charging voltage is fine, system messages cleared but I am ...

[Request Quote](#)



New Battery



So I think the time has come to replace the main battery. Its the original Volvo 70ah EFB battery that was on the car from new in 2016.. The car starts fine but I keep getting the ...

[Request Quote](#)



Battery Recycling for Businesses

Battery Recycling for Businesses Use the chart below to determine how to handle used batteries generated by your business. Batteries that are considered hazardous must be recycled or ...

[Request Quote](#)

Amazon : Automatic Battery Disconnect

Remote Battery Disconnect Switch 12V 240A, Smart Voltage Kill Switch for Car Boat Motorcycle Truck RV, Automatic Cut-Off Isolator, Anti Theft, Stop Battery Drain, with Manual Override

[Request Quote](#)



Battery replacement question. , Volvo V40 Forums

The main battery is the one to look at. The secondary battery is only connected to the car by a relay for a fraction of a second during an engine restart from a stop/start event, ...

[Request Quote](#)

Household Battery Recycling



Household battery recycling locations Lead-acid batteries, or "automotive type batteries," are banned from disposal. Consumers may bring lead-acid batteries to any Wisconsin retailer that ...

[Request Quote](#)



[Low Battery warning , Volvo V40 Forums](#)

Battery is easy to do yourself if you're at all handy around a screw driver and a spanner, just remember to reset the battery management system before you start using the ...

[Request Quote](#)



Contact Us

For catalog requests, pricing, or partnerships, please visit:

<https://www.energyinnovationday.pl>

Phone: +48 22 335 1273

Email: info@energyinnovationday.pl

Scan the QR code to contact us via WhatsApp.

