



Battery Reset BMS





Overview

What is a battery management system (BMS) reset?

BMS stands for “Battery Management System.” It’s the assembly that houses and keeps the batteries operational. The BMS monitors battery levels, optimizes battery performance, and controls battery temperature. A BMS reset restores the BMS to its default settings to make sure it works as intended.

When is a BMS reset necessary?

Resetting the BMS is only necessary when the system malfunctions or the battery isn’t performing as usual. Resetting the BMS restores the system to its default settings, allowing it to make adjustments to battery performance according to the vehicle. The reset helps extend a car battery’s lifespan by ensuring efficient power use.

How do I Reset my lithium battery BMS?

Resetting a Lithium Battery BMS might sound like a daunting task, but it is actually quite simple. The first step is to disconnect the battery from any power source and remove it from its housing. Next, locate the BMS reset button or switch on the battery management system. Press and hold this button for 10-15 seconds.

Do non electric vehicles need a BMS reset?

Non-electric vehicles don’t have complex battery management systems like those used on electric vehicles. However, newer non-EVs do have a basic system to manage the battery, so on a non-EV, a BMS reset might be necessary after a 12-volt battery replacement or a system malfunction.



Battery Reset BMS



What Is a BMS Reset for Electric Vehicles? When and How to Do It

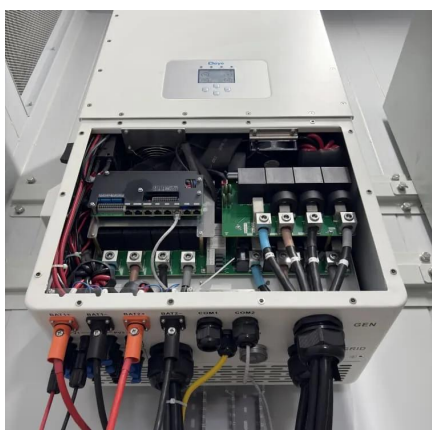
Learn about your car's battery management systems as well as when and how to do BMS resets in this article.

[Request Quote](#)

[BMS Reset: How to Restore Battery Management Systems](#)

This article explains the causes, symptoms, and three main methods of BMS reset, helping users restore accurate State of Charge (SOC) and ensure reliable battery performance.

[Request Quote](#)



[How to Reset the Battery Management System](#)

Learn what a battery management system is, what can cause a malfunction, and how to reset it for your electrical vehicle with AutoZone.

[Request Quote](#)

[Resetting Lithium Battery BMS: A Comprehensive Guide to ...](#)

In this article, we will delve into the world of lithium battery BMS reset, exploring the reasons behind the need for a reset, the preparation required, and the step-by-step process to ...



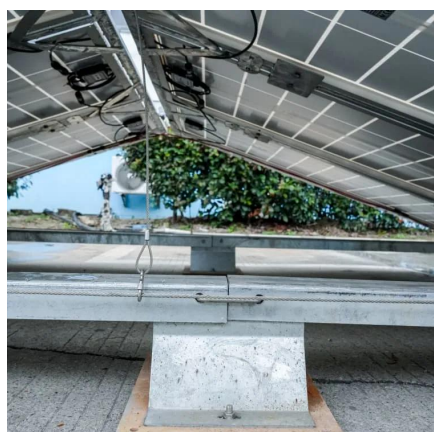
[Request Quote](#)



[How to Perform a Ford Battery Monitoring System Reset](#)

That's because Ford vehicles have used a smart system called the Battery Monitoring System, or BMS, since 2011, which needs to be reset any time the battery is ...

[Request Quote](#)



A Complete Guide to Resetting Your Car's Battery Management ...

In this comprehensive guide, we'll cover everything you need to know about automotive BMS resets - what they are, when you need one, how to perform a reset, and more.

[Request Quote](#)



[DOE Explains Batteries , Department of Energy](#)

Once charged, the battery can be disconnected from the circuit to store the chemical potential energy for later use as electricity. Batteries were invented in 1800, but their complex chemical ...

[Request Quote](#)



Science 101: Batteries



What is a battery? Batteries power our lives by transforming energy from one type to another. Whether a traditional disposable battery (e.g., AA) or a rechargeable lithium-ion battery (used ...

[Request Quote](#)



[Automotive Batteries at Tractor Supply Co.](#)

Automotive Batteries at Tractor Supply Co. Buy online, free in-store pickup. Shop today!

[Request Quote](#)



[How to Reset Your BMS Battery: Troubleshooting & Safe Steps](#)

Learn how to safely reset your Battery Management System (BMS) to fix imbalances, clear error codes, and restore optimal battery performance.

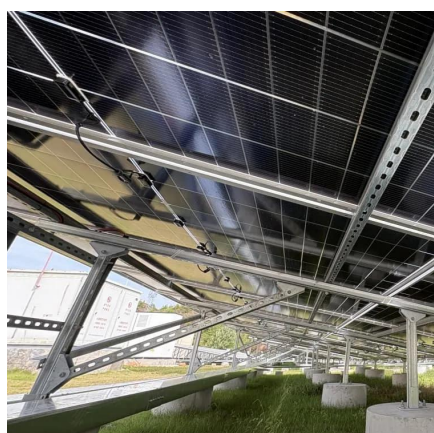
[Request Quote](#)



[How to Reset the Battery Management System](#)

Learn what a battery management system is, what can cause a malfunction, and how to reset it for your electrical vehicle with AutoZone.

[Request Quote](#)



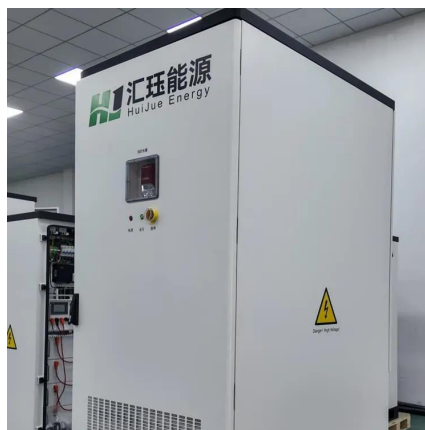
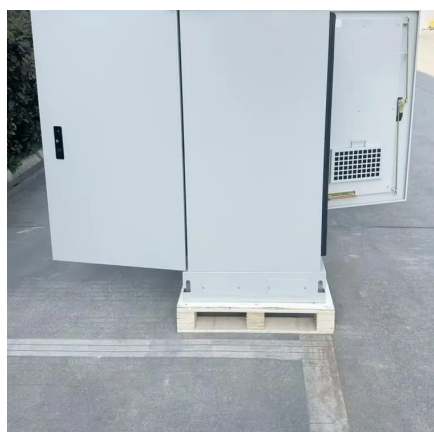
[What Is a BMS Reset for Electric Vehicles?](#)



[When ...](#)

Learn about your car's battery management systems as well as when and how to do BMS resets in this article.

[Request Quote](#)



[How to Reset Your BMS Battery: Troubleshooting ...](#)

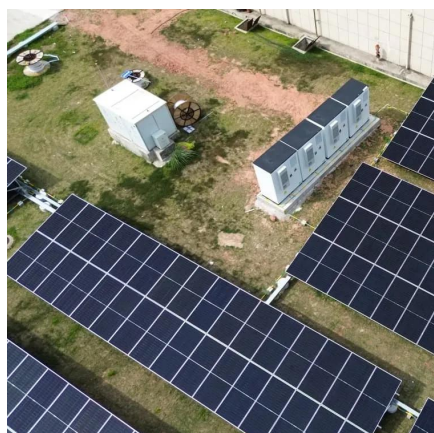
Learn how to safely reset your Battery Management System (BMS) to fix imbalances, clear error codes, and restore optimal battery ...

[Request Quote](#)

Car Battery

Get a new car battery to keep your car working right. We offer Same Day Pickup in our stores, or get Next Day Delivery on qualifying purchases.

[Request Quote](#)



What is a Battery?

Historically, the word "battery" was used to describe a "series of similar objects grouped together to perform a function," as in a battery of artillery. In 1749, Benjamin Franklin first used the term ...

[Request Quote](#)

iPhone Battery Replacement



iPhone Battery Replacement We're here to help. Our experts use genuine Apple batteries -- designed, tested, and manufactured for Apple's safety and performance standards. How can I ...

[Request Quote](#)



[Science Simplified: What Is a Battery?](#)

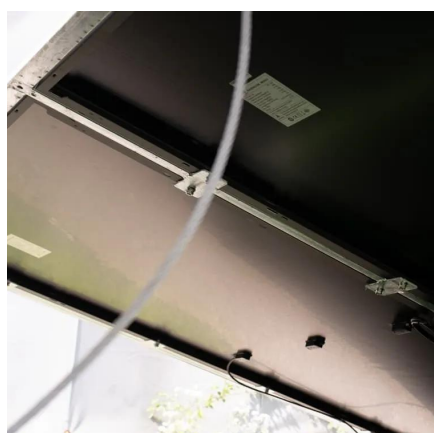
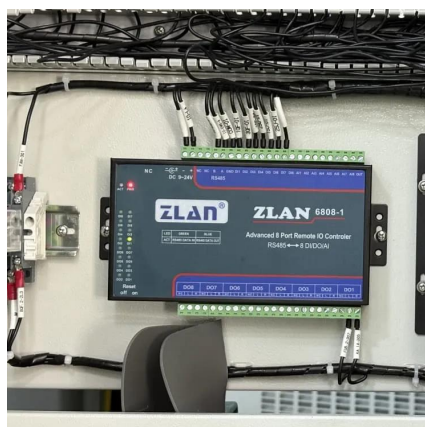
What Is a Battery? Batteries power our lives by transforming energy from one type to another. Whether a traditional disposable battery (e.g., AA) or a rechargeable lithium-ion ...

[Request Quote](#)

Electric battery

When a battery is connected to an external electric load, those negatively charged electrons flow through the circuit and reach the positive terminal, thus causing a redox reaction by attracting ...

[Request Quote](#)



[Resetting the Balance: How to Reset a Lithium Battery BMS](#)

Resetting a lithium battery BMS is an important step to ensure the optimal performance and longevity of your device's battery. While it may seem daunting at first, ...

[Request Quote](#)

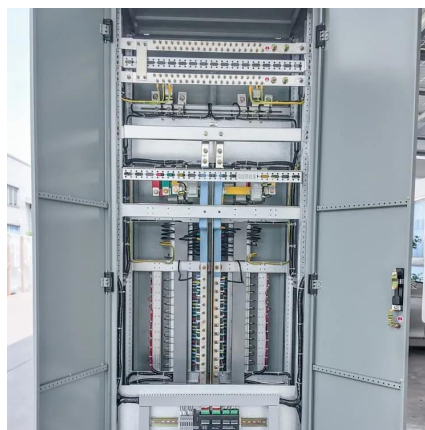
[Battery , Composition, Types, & Uses .](#)



[Britannica](#)

Batteries are divided into two general groups: (1) primary batteries and (2) secondary, or storage, batteries. Primary batteries are designed to be used until the voltage is ...

[Request Quote](#)



Battery at Batteries Plus

Power your household devices and battery-operated appliances with our vast selection of alkaline batteries. Find traditional sizes, like AA, AAA, C, D, and 9 volt, as well as unique, harder-to ...

[Request Quote](#)

[How to Reset a Battery Management System \(BMS\)](#)

Restore functionality to your locked-out Battery Management System (BMS). Learn critical safety precautions and step-by-step reset methods.

[Request Quote](#)



[How to Reset Battery Management System \(BMS\) Safely - A ...](#)

Access the battery module (Battery ECU) and select options such as reset battery history, clear DTCs, or re-initialize BMS. Follow the on-screen instructions and wait for the ...

[Request Quote](#)



Contact Us

For catalog requests, pricing, or partnerships, please visit:

<https://www.energyinnovationday.pl>

Phone: +48 22 335 1273

Email: info@energyinnovationday.pl

Scan the QR code to contact us via WhatsApp.

