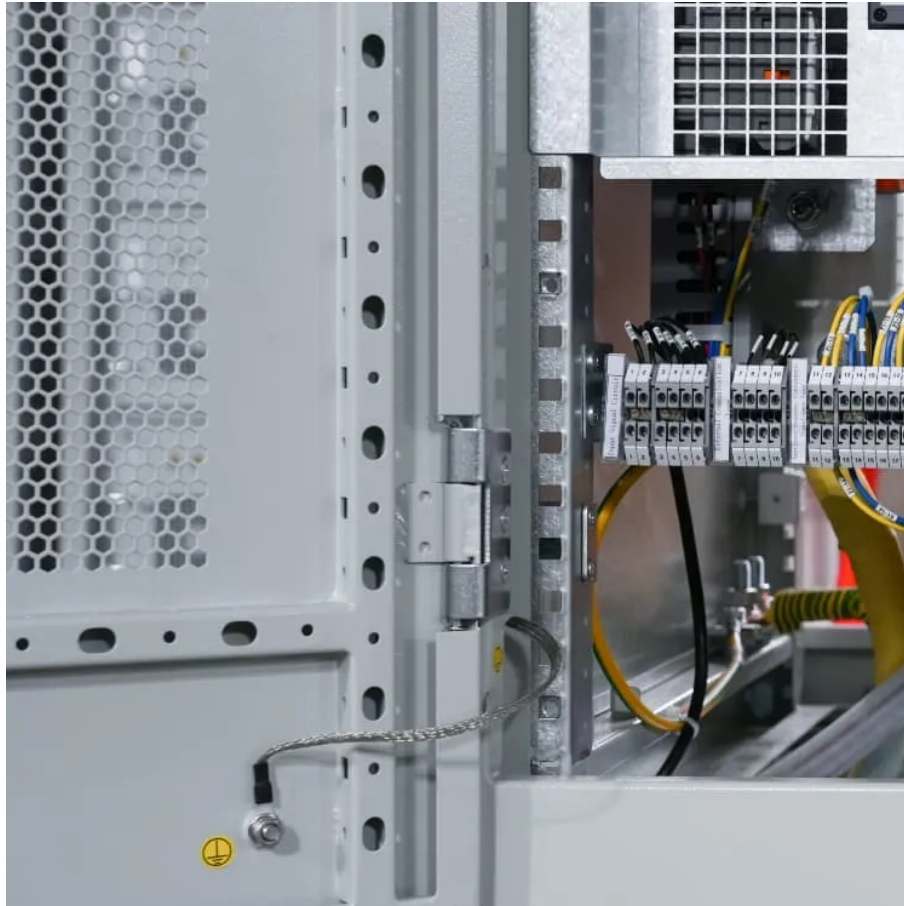




# Battery Management System BMS Solution





## Overview

---

What is a battery management system (BMS)?

Battery management systems (BMS) enhances the performance and ensures the safety of a battery pack composed of multiple cells. Functional safety is critical as lithium-ion batteries pose a significant safety hazard when operated outside their safe operating area.

What is a battery management system?

A battery management system represents one of the most critical safety and performance components in modern energy storage applications. At its core, a BMS serves as an intelligent guardian that continuously monitors individual battery cells and the overall pack to prevent potentially dangerous situations while maximizing efficiency and longevity.

What is a multi-master battery management unit (BMS)?

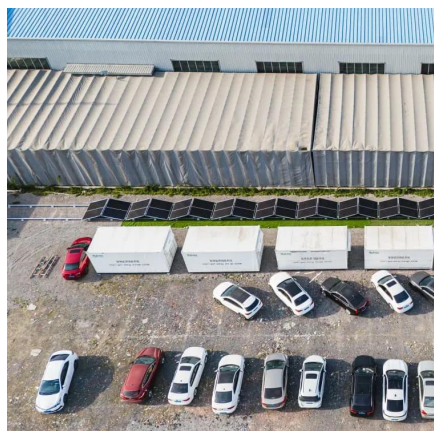
NX-Tech's BMS offers a parallel pack control which provides an advantage for scalable, modular battery architectures suitable for: A multi-master BMS allows multiple Battery Management Units (BMUs) to coordinate as peers within a battery system.

How do battery management systems protect batteries from dangerous conditions?

Battery management systems are the critical intelligence behind modern battery technologies, especially when you have lithium-ion chemistries that just need constant monitoring for safety. In this piece, we got into how BMS technology protects batteries from dangerous conditions while optimizing their performance and extending their lifespan.



## Battery Management System BMS Solution



### From Passive to Adaptive: The Rise of AI-driven Battery Management Systems

Discover how AI-driven Battery Management Systems (BMS) are revolutionizing electric vehicles by optimizing battery performance, extending lifespan, and enhancing safety ...

[Request Quote](#)

### [From Passive to Adaptive: The Rise of AI-driven ...](#)

Discover how AI-driven Battery Management Systems (BMS) are revolutionizing electric vehicles by optimizing battery performance, ...

[Request Quote](#)



### New Battery

So I think the time has come to replace the main battery. Its the original Volvo 70ah EFB battery that was on the car from new in 2016.. The car starts fine but I keep getting the ...

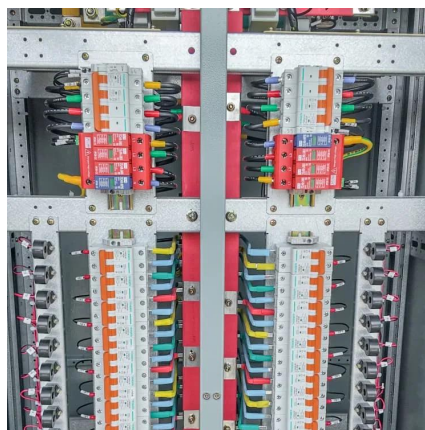
[Request Quote](#)

### [What Is a Battery Management System \(BMS\)?](#)

It ensures safe operation, maximizes energy efficiency, and extends battery longevity by monitoring every cell in real time and executing control strategies accordingly. In ...



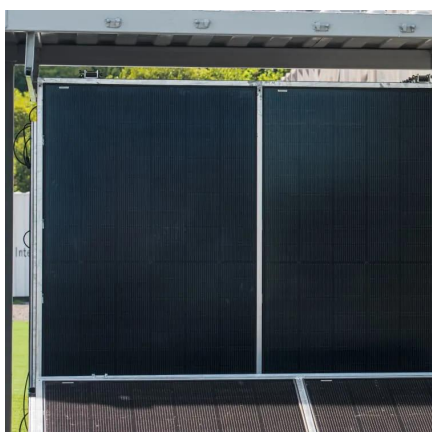
[Request Quote](#)



### Main Battery Change

Going to change the service battery in my 15 V40cc D2. Anything I need to be ware of or look out for ??

[Request Quote](#)



### [Battery replacement question. , Volvo V40 Forums](#)

The main battery is the one to look at. The secondary battery is only connected to the car by a relay for a fraction of a second during an engine restart from a stop/start event, ...

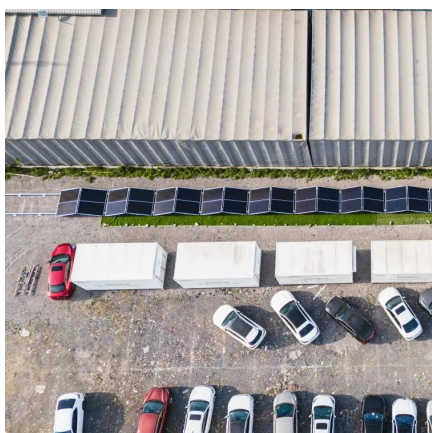
[Request Quote](#)



### [Battery management systems \(BMS\) , Infineon Technologies](#)

Discover our advanced BMS solutions, designed to enhance performance, extend battery life, and provide reliable energy management.

[Request Quote](#)



### Battery Management System (BMS)



Committed to sustainable mobility and renewable power grids, we offer innovative BMS solutions including the complete chipset for wired or ...

[Request Quote](#)



## Battery issues

I've had both batteries replaced (with the correct models), done a 100 mile trip, overnight smart battery charge, charging voltage is fine, system messages cleared but I am ...

[Request Quote](#)

## Homepage

Explore high-voltage battery management with our new HiVO system. Discover how we combine over 20 years of BMS expertise with the latest technologies to deliver cutting-edge solutions ...

[Request Quote](#)



## [What is a Battery Management System? Complete ...](#)

A Battery Management System (BMS) is an electronic control unit that monitors and manages rechargeable battery packs to ensure ...

[Request Quote](#)

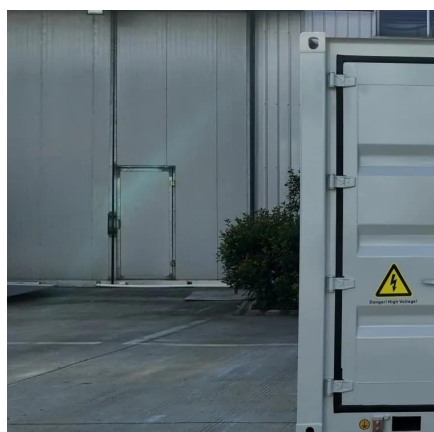
## [Low battery charge error , Volvo V40](#)



## [Forums](#)

Hello everyone, I just bought my first car, a 2014 Volvo V40 T3, and a warning appears on the dashboard that says 'low battery charge.' The car is recently

[Request Quote](#)



## Battery

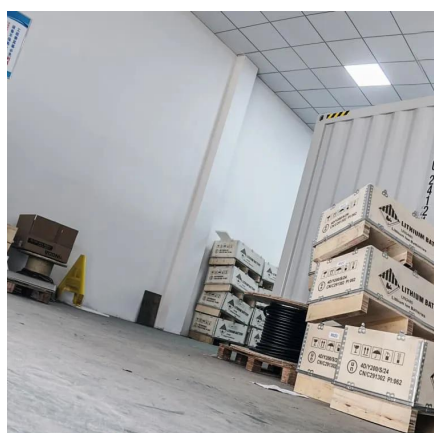
How do you charge the small battery - I charge the main battery to show full, but the auxiliary battery loses charge if listening to the radio when stationary. podger

[Request Quote](#)

## Battery Recycling for Businesses

Battery Recycling for Businesses Use the chart below to determine how to handle used batteries generated by your business. Batteries that are considered hazardous must be recycled or ...

[Request Quote](#)



## What is a Battery Management System? Complete Guide to BMS ...

A Battery Management System (BMS) is an electronic control unit that monitors and manages rechargeable battery packs to ensure safe operation, optimal performance, and ...

[Request Quote](#)

## BMS Development , BMS Solutions



Re:Build Battery Solutions develops advanced Battery Management Systems (BMS) that optimize safety, performance, and efficiency for lithium-ion battery packs across aerospace, automotive, ...

[Request Quote](#)



## Low battery charge message

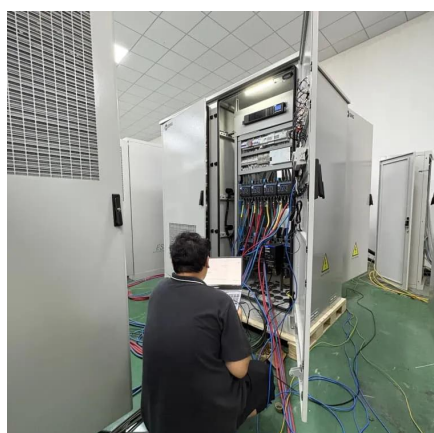
The low battery charge message relates to the main battery. On vehicles with stop/start systems and intelligent alternators, the vehicle battery is designed to operate at ...

[Request Quote](#)

## Battery Management System (BMS)

Committed to sustainable mobility and renewable power grids, we offer innovative BMS solutions including the complete chipset for wired or wireless BMS communications, common software ...

[Request Quote](#)



## Powering the Present and Future with Battery Management Systems

With the global surge in battery demand, a robust Battery Management System (BMS) is crucial for safety and performance. Bosch's advanced BMS solutions enable precise monitoring of Li ...

[Request Quote](#)

## Household Battery Recycling



Household battery recycling locations Lead-acid batteries, or "automotive type batteries," are banned from disposal. Consumers may bring lead-acid batteries to any Wisconsin retailer that ...

[Request Quote](#)



### [Low Battery warning , Volvo V40 Forums](#)

Battery is easy to do yourself if you're at all handy around a screw driver and a spanner, just remember to reset the battery management system before you start using the ...

[Request Quote](#)



## **What is a Battery Management System (BMS)? Essential Guide ...**

A Battery Management System (BMS) safeguards lithium-ion batteries by monitoring voltage, current, and temperature, preventing overcharge, discharge, and thermal ...

[Request Quote](#)



### [Battery management systems \(BMS\) , Infineon ...](#)

Discover our advanced BMS solutions, designed to enhance performance, extend battery life, and provide reliable energy management.

[Request Quote](#)



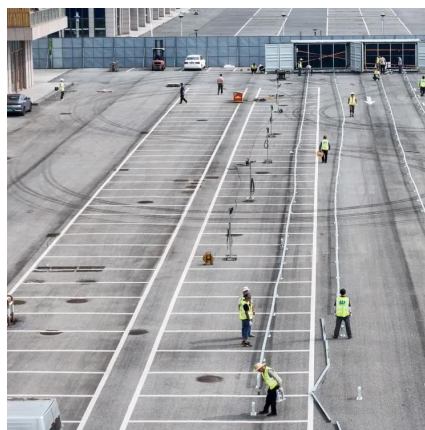
### [Battery Management Systems , Lithium](#)



## [BMS Design](#)

Voltaplex is proud to design and manufacture battery management systems (BMS) that optimize lithium-ion battery packs' safety, reliability, and performance. We engineer our solutions for ...

[Request Quote](#)



## [What is a Battery Management System \(BMS\)?](#)

A Battery Management System (BMS) safeguards lithium-ion batteries by monitoring voltage, current, and temperature, preventing ...

[Request Quote](#)



## Contact Us

---

For catalog requests, pricing, or partnerships, please visit:

<https://www.energyinnovationday.pl>

Phone: +48 22 335 1273

Email: [info@energyinnovationday.pl](mailto:info@energyinnovationday.pl)

Scan the QR code to contact us via WhatsApp.

