



# Base stations of mobile communication network





## Overview

---

Base station (or base radio station, BS) is – according to the 's (ITU) (RR) – a " in the ." A base station is called in , in (), and in . The term is used in the context of ,

Simply put, a base station (BS) is a wireless transceiver device in a mobile communication network that provides wireless coverage and communicates with mobile terminals like your phone. It acts as a bridge, connecting your phone to a vast communication network to ensure smooth.

Simply put, a base station (BS) is a wireless transceiver device in a mobile communication network that provides wireless coverage and communicates with mobile terminals like your phone. It acts as a bridge, connecting your phone to a vast communication network to ensure smooth.

Base stations typically have a transceiver, capable of sending and receiving wireless signals; Otherwise if they only send the trailer it will be considered a transmitter or broadcast point only. The base station will have one or more RF antennas installed to transmit and receive RF signals from.

Base station (or base radio station, BS) is – according to the International Telecommunication Union 's (ITU) Radio Regulations (RR) [1] – a " land station in the land mobile service." A base station is called node B in 3G, eNB in LTE (4G), and gNB in 5G. The term is used in the context of mobile.

Base stations play a pivotal role in mobile telecommunications, acting as the nexus between users' cell phones and the broader network infrastructure. Understanding how these stations function is essential for anyone engaged in the field of telecommunications or simply interested in the mechanics.

A base station is an integral component of wireless communication networks, serving as a central point that manages the transmission and reception of signals between cellular networks and mobile devices. It ensures that users can access voice and data services effectively. Now that we have a solid.

If the mobile communication network were a giant spider web, the base station would be every single node on that web. But have you ever considered how much heat these devices generate when they operate 24/7?

If that heat isn't effectively dissipated, the base station's performance can



severely.

Base stations are integral to the functioning of mobile networks, enabling devices to connect and communicate efficiently. What Does a Base Station do?

**Signal Transmission and Reception:** The primary function of a base station is to transmit and receive radio signals. It communicates with mobile.



## Base stations of mobile communication network



### [What Is a Base Station? Exploring the Core of 5G ...](#)

Simply put, a base station (BS) is a wireless transceiver device in a mobile communication network that provides wireless ...

[Request Quote](#)

### Base Stations

Base stations form a key part of modern wireless communication networks because they offer some crucial advantages, such as wide coverage, continuous communications and ...

[Request Quote](#)



### What is a base station?

Base stations in cellular telephone networks are more commonly referred to as cell towers. Each cellphone connects to the cell tower, which in turn connects it to the wired public ...

[Request Quote](#)

### Base station

Base station (or base radio station, BS) is - according to the International Telecommunication Union 's (ITU) Radio Regulations (RR) [1] - a " land station in the land mobile service." A base ...

[Request Quote](#)



## What Is a Base Station? Exploring the Core of 5G Networks and ...

Simply put, a base station (BS) is a wireless transceiver device in a mobile communication network that provides wireless coverage and communicates with mobile ...

[Request Quote](#)

## [Understanding Base Stations in Mobile ...](#)

A base station is a fixed point that enables wireless communication between mobile devices and the network. These stations consist of radio ...

[Request Quote](#)



## [Types and Applications of Mobile Communication ...](#)

Mobile communication base station is a form of radio station, which refers to a radio transceiver station that transmits information ...

[Request Quote](#)

## Base station



Overview  
Land surveying  
Computer networking  
Wireless communications  
See also

Base station (or base radio station, BS) is - according to the International Telecommunication Union's (ITU) Radio Regulations (RR) - a "land station in the land mobile service." A base station is called node B in 3G, eNB in LTE (4G), and gNB in 5G. The term is used in the context of mobile telephony, wireless computer networking

[Request Quote](#)



## Base Stations and Cell Towers: The Pillars of Mobile Connectivity

Base stations are equipped with technology to manage network traffic, optimize signal strength, and ensure efficient use of the radio spectrum. They handle handovers when ...

[Request Quote](#)

## What is a base station?

Base stations in cellular telephone networks are more commonly referred to as cell towers. Each cellphone connects to the cell ...

[Request Quote](#)



## Understanding Base Stations in Mobile Communication

A base station is a fixed point that enables wireless communication between mobile devices and the network. These stations consist of radio transceivers, antennas, and a controller which ...

[Request Quote](#)

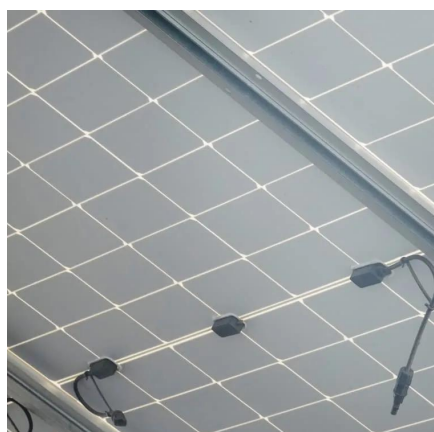
## Types and Applications of Mobile



## Communication Base Stations

Mobile communication base station is a form of radio station, which refers to a radio transceiver station that transmits information between mobile phone terminals through a ...

[Request Quote](#)



## [What Is Base Station In Wireless Communication?](#)

In a cellular network, a base station is responsible for providing wireless connectivity to mobile devices within its coverage area, also known as a cell. The base station ...

[Request Quote](#)



## What Is A Base Station?

A base station is an integral component of wireless communication networks, serving as a central point that manages the transmission and reception of signals between ...

[Request Quote](#)



## [What is a Base Station in Telecommunications?](#)

Base stations are the backbone of modern telecommunications networks, providing the essential infrastructure for wireless communication. They enable mobile devices to connect to the ...

[Request Quote](#)

## [What is a Base Station in](#)



## Telecommunications?

Base stations are the backbone of modern telecommunications networks, providing the essential infrastructure for wireless communication. They ...

[Request Quote](#)





## Contact Us

---

For catalog requests, pricing, or partnerships, please visit:

<https://www.energyinnovationday.pl>

Phone: +48 22 335 1273

Email: [info@energyinnovationday.pl](mailto:info@energyinnovationday.pl)

Scan the QR code to contact us via WhatsApp.

