



Base station wireless device communication





Overview

A base transceiver station (BTS) or a baseband unit (BBU) is a piece of equipment that facilitates between (UE) and a network. UEs are devices like (handsets), phones, computers with connectivity, or antennas mounted on buildings or telecommunication towers. The network can be that of any of the wireless communication technologies like , , , , or other

A base station, also known as a cell tower or base transceiver station (BTS), is a crucial component of wireless communication networks. It serves as the central point for communication between mobile devices and the rest of the network.

A base station, also known as a cell tower or base transceiver station (BTS), is a crucial component of wireless communication networks. It serves as the central point for communication between mobile devices and the rest of the network.

The present-day tele-space is incomplete without the base stations as these constitute an important part of the modern-day scheme of wireless communications. They are referred to as cell towers or cellular antennas. These types of objects are an inevitability since they serve the purpose of.

A base station, also known as a cell tower or base transceiver station (BTS), is a crucial component of wireless communication networks. It serves as the central point for communication between mobile devices and the rest of the network. Base stations are used in various wireless communication.

A base transceiver station (BTS) or a baseband unit[1] (BBU) is a piece of equipment that facilitates wireless communication between user equipment (UE) and a network. UEs are devices like mobile phones (handsets), WLL phones, computers with wireless Internet connectivity, or antennas mounted on.

A base station is a critical component of wireless communication networks. It serves as the central point of a network that connects various devices, such as smartphones, tablets, and computers. The base station transmits and receives signals, ensuring seamless communication over radio frequencies.

It enables seamless communication by linking various wireless devices to broader networks, ensuring that data flows efficiently from one point to another. A base station is an integral component of wireless communication networks, serving as a central point that manages the transmission and.



Base stations are critical components in wireless communication networks, serving as the intermediary between mobile devices and the core network. They play a vital role in ensuring seamless connectivity, efficient data transmission, and reliable communication services. This blog explores the.



Base station wireless device communication



[What Is a Base Station? Definition and How It Works](#)

What is a Base Station? A base station is a fixed transceiver that serves as the central communication point for mobile devices within a defined geographical area, known as ...

[Request Quote](#)

[Base Station's Role in Wireless Communication Networks](#)

A base station is a critical component of wireless communication networks. It serves as the central point of a network that connects various devices, such as smartphones, tablets, and computers.

[Request Quote](#)



What Is A Base Station?

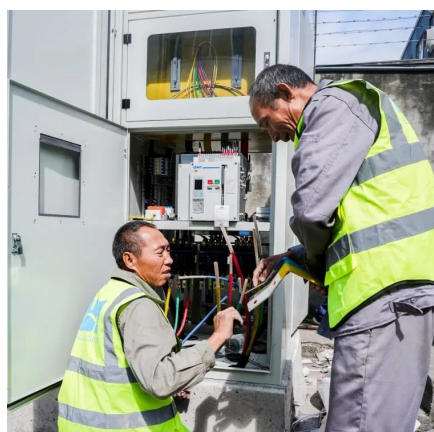
A base station is a piece of equipment that facilitates wireless communication between devices and a network. It contains the necessary hardware and software to transmit ...

[Request Quote](#)

[What is a Base Station? -- From Communication ...](#)

Simply put, a base station (BS) is a wireless transceiver device in a mobile communication network that provides wireless ...

[Request Quote](#)



What Is the Role of a Base Station in Wireless Communication?

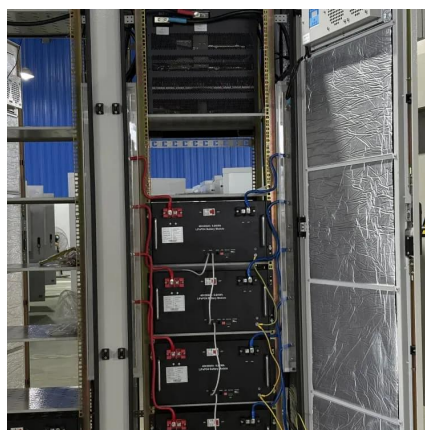
Base stations are critical components in wireless communication networks, serving as the intermediary between mobile devices and the core network. They play a vital role in ...

[Request Quote](#)

What is a base station?

In telecommunications, a base station is a fixed transceiver that is the main communication point for one or more wireless mobile client devices. A base station serves as ...

[Request Quote](#)



Base transceiver station

A base transceiver station (BTS) or a baseband unit (BBU) is a piece of equipment that facilitates wireless communication between user equipment (UE) and a network. UEs are devices like mobile phones (handsets), WLL phones, computers with wireless Internet connectivity, or antennas mounted on buildings or telecommunication towers. The network can be that of any of the wireless communication technologies like GSM, CDMA, wireless local loop, Wi-Fi, WiMAX or other

[Request Quote](#)



What is a Base Station? -- From Communication Core to ...

Simply put, a base station (BS) is a wireless transceiver device in a mobile communication network that provides wireless coverage and communicates with mobile ...

[Request Quote](#)



What Is A Base Station?

A base station is a piece of equipment that facilitates wireless communication between devices and a network. It contains the necessary ...

[Request Quote](#)

Base Station's Role in Wireless Communication Networks

A base station is a critical component of wireless communication networks. It serves as the central point of a network that connects various devices, such as ...

[Request Quote](#)



What Is a Base Station?

Meaning of a base station in wireless networks, cell towers, and cordless phones, serving as a hub for communication, data ...

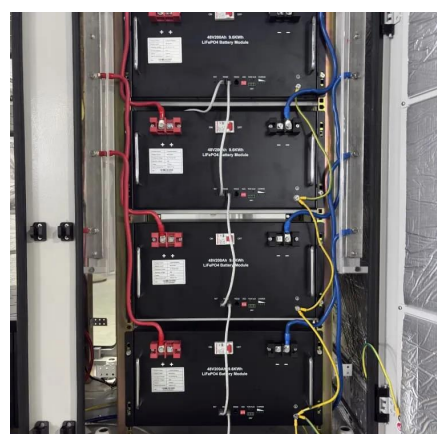
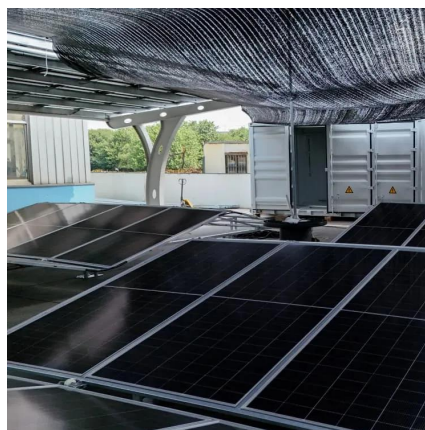
[Request Quote](#)

Base Stations



A base station represents an access point for a wireless device to communicate within its coverage area. It usually connects the device to other networks or devices through a ...

[Request Quote](#)



What Is a Base Station?

Meaning of a base station in wireless networks, cell towers, and cordless phones, serving as a hub for communication, data transmission, and device charging.

[Request Quote](#)

[What Is Base Station In Wireless Communication?](#)

In wireless communication, a base station is a critical component that enables wireless communication between devices. It serves as a central point of connection for ...

[Request Quote](#)



Base transceiver station

A base transceiver station (BTS) or a baseband unit[1] (BBU) is a piece of equipment that facilitates wireless communication between user equipment (UE) and a network.

[Request Quote](#)



Contact Us

For catalog requests, pricing, or partnerships, please visit:

<https://www.energyinnovationday.pl>

Phone: +48 22 335 1273

Email: info@energyinnovationday.pl

Scan the QR code to contact us via WhatsApp.

