



Base station solar container battery working principle site





Overview

Once the container arrives on-site, it's a matter of connecting it to the grid or renewable energy source, and voila, you have an instant power station ready to balance loads, store excess energy, or provide backup power during outages.

Once the container arrives on-site, it's a matter of connecting it to the grid or renewable energy source, and voila, you have an instant power station ready to balance loads, store excess energy, or provide backup power during outages.

Major projects now deploy clusters of 20+ containers creating storage farms with 100+MWh capacity at costs below \$280/kWh. Technological advancements are dramatically improving solar storage container performance while reducing costs. Next-generation thermal management systems maintain optimal.

The working principle of emergency lithium-ion energy storage vehicles or megawatt-level fixed energy storage power stations is to directly convert high-power lithium-ion battery packs a?

| For this reason, we will dedicate this article to telling you everything you need to know about lithium solar.

They integrate lithium-ion or flow battery cells, battery management systems (BMS), and thermal controls to store 200kWh-10MWh of energy. Designed for grid stabilization, renewable energy buffering, and industrial backup, they offer plug-and-play deployment. [pdf] These boards act as the "brain" of.

Containerized Battery Storage (CBS) is a modern solution that encapsulates battery systems within a shipping container-like structure, offering a modular, mobile, and scalable approach to energy storage. It's like having a portable powerhouse that can be deployed wherever needed. This form of.

A Containerized Battery Energy Storage System (BESS) is rapidly gaining recognition as a key solution to improve grid stability, facilitate renewable energy integration, and provide reliable backup power. In this article, we'll explore how a containerized battery energy storage system works, its.

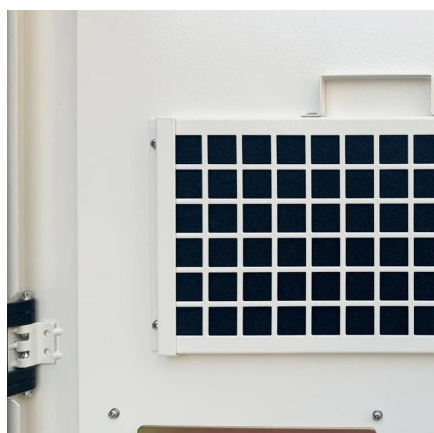
How much battery capacity does the base station use?



The average battery capacity required by a base station ranges from 15 to 50 amp-hours (Ah), depending on the base station's operational demands and the technologies it employs. 1. Once Tesla's primary battery partner, Panasonic specializes in.



Base station solar container battery working principle site



WORKING PRINCIPLE OF BATTERY PACK IN BASE STATION

SEB Nordic Energy's portfolio company Locus Energy, in collaboration with Ingrid Capacity, proudly announces the groundbreaking of one of Finland's largest battery energy storage ...

[Request Quote](#)

OVERVIEW OF TELECOM BASE STATION BATTERIES

These boards act as the "brain" of modular battery setups, ensuring safety while optimizing performance. Think of them as traffic controllers - they manage charge/discharge cycles, ...

[Request Quote](#)



LITHIUM BATTERY SOLAR CONTAINER PRINCIPLE FOR ...

What does the battery energy storage system of the Montenegro communication base station look like The containerized energy storage system is composed of an energy storage converter, ...

[Request Quote](#)

WORKING PRINCIPLE OF LITHIUM BATTERY ENERGY ...

Technological advancements are dramatically improving solar storage container performance while reducing costs. Next-generation thermal management systems maintain optimal ...



[Request Quote](#)



[How a Containerized Battery Energy Storage System Can ...](#)

A Containerized Battery Energy Storage System (BESS) is rapidly gaining recognition as a key solution to improve grid stability, facilitate renewable energy integration, ...

[Request Quote](#)



The Working Principle and Benefit Analysis of Solar Battery ...

Gain a comprehensive understanding of solar battery energy storage systems, including their working principles and benefits. This article delves into the inner workings of these systems, ...

[Request Quote](#)



WORKING PRINCIPLE OF LITHIUM BATTERY ENERGY STORAGE BASE STATION

Technological advancements are dramatically improving solar storage container performance while reducing costs. Next-generation thermal management systems maintain optimal ...

[Request Quote](#)



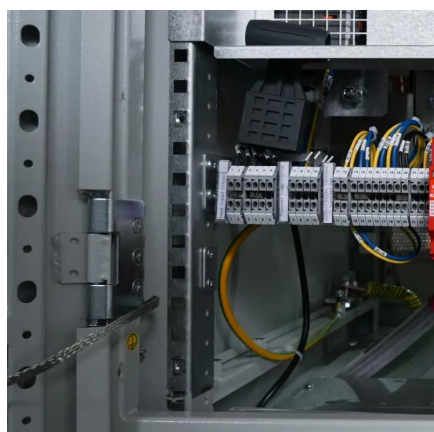
[Guide to Containerized Battery Storage:](#)



[Fundamentals, ...](#)

Once the container arrives on-site, it's a matter of connecting it to the grid or renewable energy source, and voila, you have an instant power station ready to balance loads, store excess ...

[Request Quote](#)



[Detailed Understanding of the Containerized Battery System](#)

This article explores the special qualities, advantages, uses, and future potential of the containerized battery system, offering a thorough manual for anyone thinking about putting ...

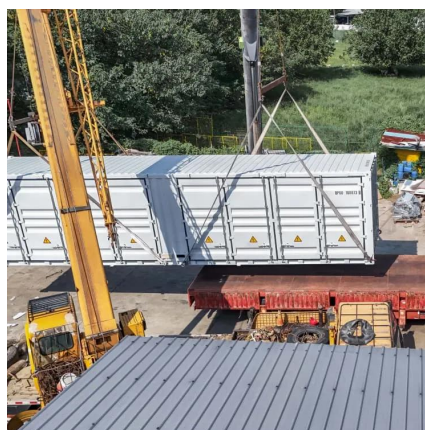
[Request Quote](#)



[WORKING PRINCIPLE OF BATTERY PACK IN BASE STATION](#)

This guide outlines the design considerations for a 48V 100Ah LiFePO4 battery pack, highlighting its technical advantages, key design elements, and applications in telecom base stations. [pdf]

[Request Quote](#)



[Guide to Containerized Battery Storage: ...](#)

Once the container arrives on-site, it's a matter of connecting it to the grid or renewable energy source, and voila, you have an instant power station ...

[Request Quote](#)

[Working Principle of Container Energy](#)



[Storage Station](#)

What is a battery energy storage system? Battery energy storage systems are generally designed to be able to output at their full rated power for several hours.

[Request Quote](#)





Contact Us

For catalog requests, pricing, or partnerships, please visit:

<https://www.energyinnovationday.pl>

Phone: +48 22 335 1273

Email: info@energyinnovationday.pl

Scan the QR code to contact us via WhatsApp.

