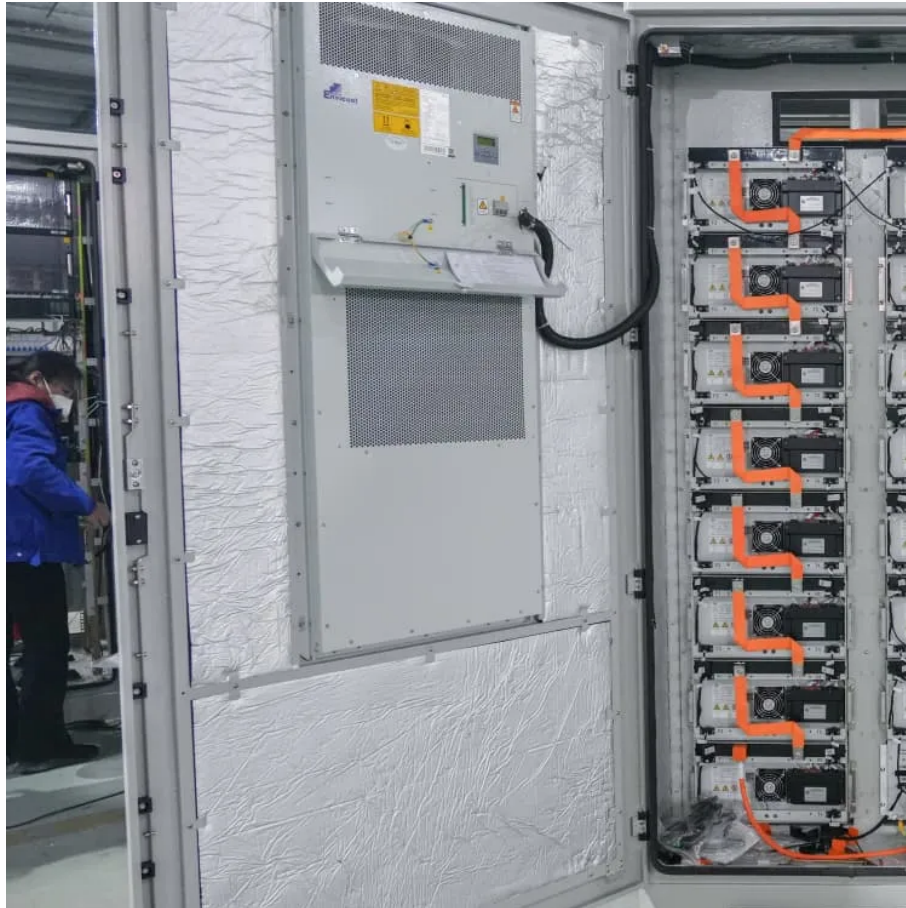




# Base station room wind power supply installation





## Overview

---

Residential wind power is emerging as a practical way for homeowners to achieve energy independence and long-term savings. Learn how to evaluate your property and prepare for a successful installation.

Residential wind power is emerging as a practical way for homeowners to achieve energy independence and long-term savings. Learn how to evaluate your property and prepare for a successful installation.

An individual base station with wind/photovoltaic (PV)/storage system exhibits limited scalability, resulting in poor economy and reliability. To address this, a collaborative power supply scheme for communication base station group is proposed. This paper establishes a capacity optimization.

The installation of wind turbines starts with a detailed feasibility study. This is where a developer will scope your land for suitability, soil structure, wind speeds and everything in between. Once they've offered you an option agreement to hold the land and secured appropriate financing, the.

The Wind Energy Guidebook contains information and resources to support local governments managing wind energy development in their communities. The Guidebook's chapters address important aspects of wind energy project siting, including environmental considerations, community impacts, permitting.

Discover wind turbine installation steps, from site assessment to grid connection, and boost your energy game! Wind energy is an essential part of the move toward sustainable energy solutions. Wind turbines play a critical role in harnessing this abundant energy source. Wind turbines convert.

These projects harness the power of wind to generate electricity, reducing reliance on fossil fuels and cutting greenhouse gas emissions. This guide walks you through the entire wind farm construction process, from initial planning to operation, and highlights why JMS Energy is a trusted partner in.

Residential wind power is emerging as a practical way for homeowners to achieve energy independence and long-term savings. Learn how to evaluate your property and prepare for a successful installation. A homeowner found their hybrid solar and



wind system could generate up to 244 watts during peak.



## Base station room wind power supply installation



### Optimal sizing of photovoltaic-wind-diesel-battery power supply ...

By switching from traditional supply based on diesel generator (DG) to HRES in remote off-grid base stations, telecommunication operators can reduce their costs, fossil-fuel ...

[Request Quote](#)

### [A Comprehensive Guide to Wind Farm Construction](#)

Wind farm construction involves designing, building, and operationalizing a series of wind turbines to capture wind energy and convert it into electricity. These projects can be ...

[Request Quote](#)



### New York State Wind Energy Guide

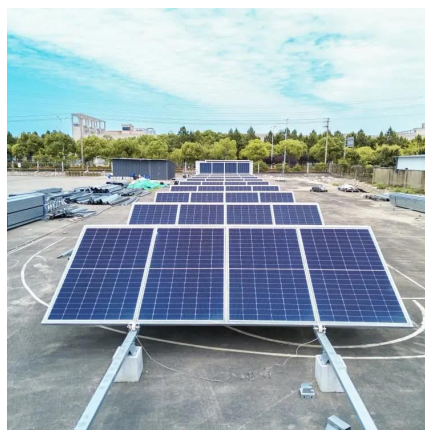
Introduction to the basic technology, equipment, and terminology used in wind projects. Introduction and discussion of key considerations for identifying optimal sites for wind energy ...

[Request Quote](#)

### [Step-by-Step Guide to Wind Turbine Installation](#)

Discover wind turbine installation steps, from site assessment to grid connection, and boost your energy game!

[Request Quote](#)



## How to Install Residential Wind Power: A Simple Guide for ...

This piece will walk you through everything about your own residential wind power system - from foundation to electrical setup.

[Request Quote](#)



## Pole-Type Base Station Cabinet , Efficient Energy Solutions for

Discover the Pole-Type Base Station Cabinet with integrated solar, wind energy, and lithium batteries. Designed for seamless installation and remote monitoring, this energy-efficient ...

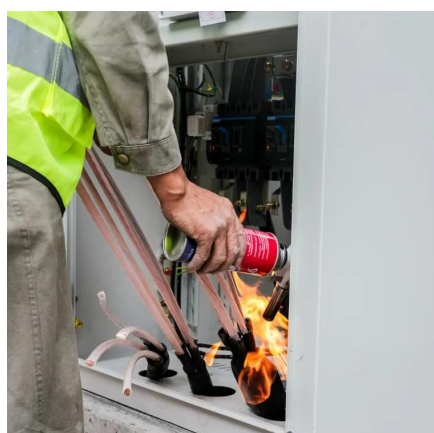
[Request Quote](#)



## ABB wind power solutions Total solutions for wind power plants

Wind farm developers depend on ABB to provide reliable, high-performing wind power generation solutions. The concepts for these solutions begin taking shape long before there is any ...

[Request Quote](#)



## [Research on Capacity Optimization](#)



## [Configuration of Wind/PV](#)

Under the "dual carbon" goals, enhancing the energy supply for communication base stations is crucial for energy conservation and emission reduction. An individual base station with ...

[Request Quote](#)



## **WINDEXchange: Small Wind Guidebook**

Before choosing a wind system for your home, you should consider reducing your energy consumption by making your home or business more energy efficient. You can start by ...

[Request Quote](#)

## [Installation of Wind Turbines: Setting Up a Wind Farm](#)

If you're trying to figure out how the installation of wind turbines works, stick with us. We'll cover everything you need to know.

[Request Quote](#)





## Contact Us

---

For catalog requests, pricing, or partnerships, please visit:

<https://www.energyinnovationday.pl>

Phone: +48 22 335 1273

Email: [info@energyinnovationday.pl](mailto:info@energyinnovationday.pl)

Scan the QR code to contact us via WhatsApp.

