



Base station power module is insufficient





Overview

The power generated by solar energy is used by the DC load of the base station computer room, and the insufficient power is supplemented by energy storage devices. Install solar panels outdoors and add equipment such as MPPT solar controllers in the computer room.

The power generated by solar energy is used by the DC load of the base station computer room, and the insufficient power is supplemented by energy storage devices. Install solar panels outdoors and add equipment such as MPPT solar controllers in the computer room.

To wire, you click on the electric sign that appears in every device and snap it to the electric sign from another device. Sometimes that electric sign disappears if you are too close to the device, so keep that in mind. Normally for low power consumption I place a biofuel generator specifically.

If you don't want to install batteries and solar panels, you can always just recharge the biofuel reactors when you go to the base. This would only be an issue for people visiting since they can't add fuel. The author of this thread has indicated that this post answers the original topic. You can.

Power is measured in kP, and power consumption is measured in kPs, which stands for kP per second. Devices that generate and consume power can be connected together with Electrical Wiring, forming a power grid. All base items, whether they need power or not, will consume energy from one wire as.

The communication base station installs solar panels outdoors, and adds MPPT solar controllers and other equipment in the computer room. The power generated by solar energy is used by the DC load of the base station computer room, and the insufficient power is supplemented by energy storage.

Solar power generation is the use of photovoltaic panels to convert solar energy into electrical energy -48V DC, and then stabilize the load power supply through photovoltaic MPPT modules while charging the battery. When continuous rainy days cause low voltage in the battery, the starting oil.

Power, or electrical power, is a resource that certain base building products require



to function. In game, power amount is measured in units called kP, while power production and consumption is measured in kP per second, abbreviated as kPs. Devices that generate and consume power can be connected.



Base station power module is insufficient



[Stable Operation of Telecom Power Systems: How Rectifier ...](#)

Rectifier modules in Telecom Power System ensure base stations stay powered and reliable, maintaining continuous operation even in harsh weather conditions.

[Request Quote](#)

What does the teleporter do and why isn't it getting enough power ...

One battery requires two solar panels as the correct ratio. That is entirely too many for just a portal. The solar panel to battery ratio for the worst case is 2 panels to 1 battery. The amount ...

[Request Quote](#)



Power

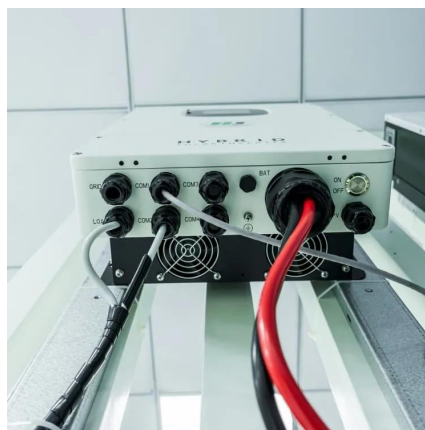
Either one needs to be connected to a powered electrical wire, while the other socket must be connected to any number of power output wires that each will power a specific base product ...

[Request Quote](#)

Base Teleport Module

Base Teleport Module is a base building product, which allows the player to quickly teleport between any bases and space stations they have visited ...

[Request Quote](#)



[Telecom Base Station PV Power Generation System Solution](#)

The power generated by solar energy is used by the DC load of the base station computer room, and the insufficient power is supplemented by energy storage devices. Install solar panels ...

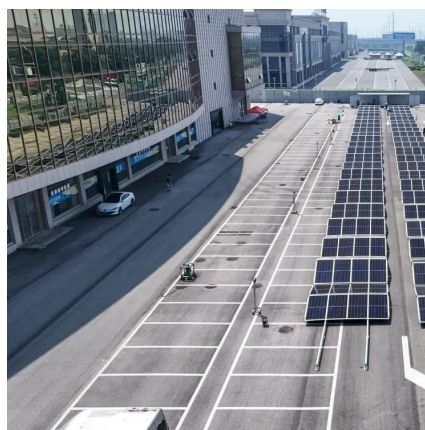
[Request Quote](#)



Management and maintenance of base station switching power ...

This article focuses on the three parts of switching power supply: "types and usage scenarios, configuration principles and algorithms, and daily management and maintenance".

[Request Quote](#)



Base Teleport Module

Base Teleport Module is a base building product, which allows the player to quickly teleport between any bases and space stations they have visited previously.

[Request Quote](#)



Power



Summary
 Electrical Grid
 Power Generators
 Power Overload
 Energized Buildings
 Freighter
 Power Consumption
 Switches
 Strategy
 Release
 History
 Devices that generate and consume power can be connected together with Electrical Wiring, forming a power grid. All base items, whether they need power or not, will consume energy from one wire as long as all objects are connected. This means that as long as your whole base is connected by objects that stick to each other, you only need one wire to See more on nomanssky.fandom hoptele [PDF]



Telecom Base Station PV Power Generation System Solution

The power generated by solar energy is used by the DC load of the base station computer room, and the insufficient power is supplemented by energy storage devices. Install solar panels ...

[Request Quote](#)



[Management and maintenance of base station ...](#)

This article focuses on the three parts of switching power supply: "types and usage scenarios, configuration principles and ...

[Request Quote](#)

[Keeping my base teleport charged :: No Man's Sky General ...](#)

Once your base gets to a certain size, the biofuel generator is not enough. I had to add a couple of solar panels and a battery to make everything work in the base. You do have ...

[Request Quote](#)



insufficient power for first aid :: No Man's Sky General Discussion



Anyone else encounter the first aid station saying "insufficient power" even if you have a surplus of power for your base? I always use cuboids or large structures, and they ...

[Request Quote](#)

POWERING THE BASE

All base items, whether they need power or not, will consume energy from one wire as long as all objects are connected. This means that, as long as ...

[Request Quote](#)



POWERING THE BASE

All base items, whether they need power or not, will consume energy from one wire as long as all objects are connected. This means that, as long as your whole base is connected by objects ...

[Request Quote](#)

[What does the teleporter do and why isn't it getting ...](#)

One battery requires two solar panels as the correct ratio. That is entirely ...

[Request Quote](#)



Telecommunication base station



system working principle and ...

If the output power of the solar module is insufficient to provide all loads, it is supplemented by the rectifier module to maintain the normal operation of the communication ...

[Request Quote](#)





Contact Us

For catalog requests, pricing, or partnerships, please visit:

<https://www.energyinnovationday.pl>

Phone: +48 22 335 1273

Email: info@energyinnovationday.pl

Scan the QR code to contact us via WhatsApp.

