



Base station power cabinet does not power on after power outage





Overview

While AC units are designed to handle occasional interruptions, certain conditions caused by outages or power surges may prevent your unit from restarting as expected. Common reasons involve breaker trips, blown fuses, thermostat program errors, or internal component failures.

While AC units are designed to handle occasional interruptions, certain conditions caused by outages or power surges may prevent your unit from restarting as expected. Common reasons involve breaker trips, blown fuses, thermostat program errors, or internal component failures.

In the event that you lose power, your Base Station has four (4) NiMH (nickel-metal hydride) rechargeable batteries that can keep your system powered for up to 24 hours. During this time, you'll still be able to arm and disarm your system using the Keypad. You'll be able to live stream from your.

The main breaker box, usually found in the basement, garage, or utility closet, contains your home's main electrical service breaker. This breaker controls the entire electrical supply to your house. Open the panel (it usually has a hinged door) and carefully inspect the breakers. Look for any that.

Experiencing a power outage can significantly impact your home's HVAC system, often leading to common problems such as the system failing to turn on. This issue is particularly concerning during extreme weather conditions, when reliance on heating and cooling becomes essential. When the power goes.

Is your SimpliSafe Base Station unexpectedly flashing red and indicating a power outage?

Or are you having a difficult time getting it to connect?

If you're experiencing these issues or something along those lines, here are steps to troubleshoot and potentially resolve the issue: One of the first.

When your AC unit fails to start after a power outage, it can be frustrating—especially during a heatwave. This scenario is common for many American homeowners, and quick action is essential to restore comfort and



prevent equipment damage. This guide explains why an AC might stop working after a.

Experiencing a power outage can be frustrating, especially when you are in the middle of something important. However, once the power is restored, you may need to take some steps to reset your power to ensure everything is back to normal. In this article, we will discuss the different ways you can.



Base station power cabinet does not power on after power outage



[AC Unit Not Working After Power Outage:](#)

...

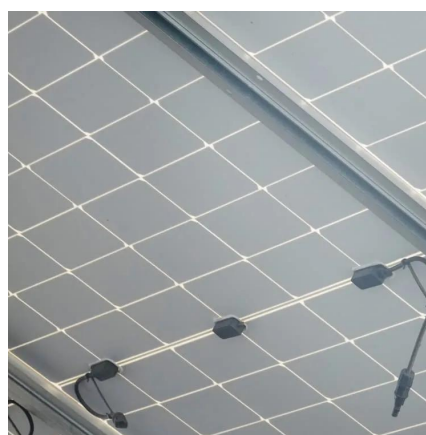
This guide explains why an AC might stop working after a power outage, how to troubleshoot the issue, and what solutions will help ...

[Request Quote](#)

[SimpliSafe Base Station Not Working? 8 Solutions \(Solved\)](#)

Is your SimpliSafe Base Station unexpectedly flashing red and indicating a power outage? Or are you having a difficult time getting it to connect? If you're experiencing these ...

[Request Quote](#)



[Post-Outage: When Your Power Won't Turn Back On](#)

In the event of a power outage, it can be frustrating and concerning when your power doesn't turn back on. There are many ...

[Request Quote](#)

[My Power Went Out -Troubleshooting No Power in ...](#)

When "my power went out" strikes, first figure out if it's a major issue or just your place. Grab your phone and dial your power company, ...

[Request Quote](#)



My Power Went Out -Troubleshooting No Power in 5 steps , Free ...

When "my power went out" strikes, first figure out if it's a major issue or just your place. Grab your phone and dial your power company, or even better, pull up their outage map ...

[Request Quote](#)



[AC Unit Not Working After Power Outage: Troubleshooting, ...](#)

This guide explains why an AC might stop working after a power outage, how to troubleshoot the issue, and what solutions will help you safely bring your HVAC system back ...

[Request Quote](#)



[How do I reset my power after a power outage?](#)

In this article, we will discuss the different ways you can reset your power after a power outage and get your home or office running smoothly again. 1. Check the Circuit ...

[Request Quote](#)



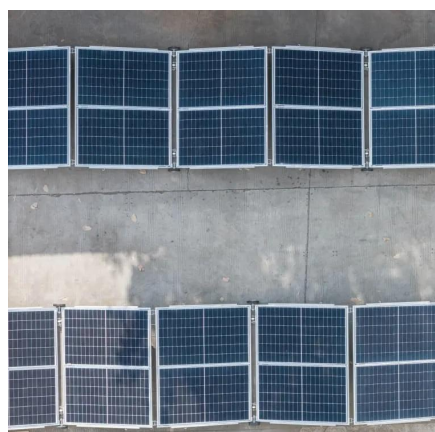
What does the error "Power Outage"



mean? , SimpliSafe Support ...

In the event that you lose power, your Base Station has four (4) NiMH (nickel-metal hydride) rechargeable batteries that can keep your system powered for up to 24 hours. During this ...

[Request Quote](#)



[Troubleshooting Common Portable Power Station Issues: A ...](#)

A comprehensive guide to diagnosing and resolving common portable power station issues, from not turning on to solar charging failures, ensuring minimal downtime and maximum device ...

[Request Quote](#)

Will My SimpliSafe® System Still Work if I Lose Power or Wi-Fi

In the event of a power outage, your SimpliSafe® Base Station is equipped with a backup rechargeable battery supply that will keep your Base Station powered for up to 24 hrs.

[Request Quote](#)



HVAC Won't Turn On After Power Outage , The Aftermath Of An Outage

After a power outage, your HVAC system may not turn on right away. This is because the system needs to reset itself after the power has been restored. If your HVAC ...

[Request Quote](#)

HVAC Won't Turn On After Power



Outage , The Aftermath Of An ...

Is your SimpliSafe Base Station unexpectedly flashing red and indicating a power outage? Or are you having a difficult time getting it ...

[Request Quote](#)



[Post-Outage: When Your Power Won't Turn Back On](#)

In the event of a power outage, it can be frustrating and concerning when your power doesn't turn back on. There are many possible reasons, but they have a common ...

[Request Quote](#)

[How to turn back on electricity? home outage fix](#)

Check appliances for any signs of damage following a power outage - unusual noises, strange smells (burning), or malfunctioning components. If you detect any anomalies, unplug the ...

[Request Quote](#)





Contact Us

For catalog requests, pricing, or partnerships, please visit:

<https://www.energyinnovationday.pl>

Phone: +48 22 335 1273

Email: info@energyinnovationday.pl

Scan the QR code to contact us via WhatsApp.

