



Base station communication room equipment





Overview

A base transceiver station (BTS) or a baseband unit (BBU) is a piece of equipment that facilitates between (UE) and a network. UEs are devices like (handsets), phones, computers with connectivity, or antennas mounted on buildings or telecommunication towers. The network can be that of any of the wireless communication technologies like , , , , or other

The guide then describes basic equipment needed in a base station: a transceiver (transmitter and receiver), a control device, microphone and speaker, a transmission line, and an antenna.

The guide then describes basic equipment needed in a base station: a transceiver (transmitter and receiver), a control device, microphone and speaker, a transmission line, and an antenna.

It is station that will be able to follow your every move. packaged in a singular, lightweight, lockable aluminum You depend on a versatile device that can be installed suitcase that can travel comfortably alongside you. It at the last minute so your personnel can communicate provides the.

As one of the leading providers of professional communication equipment, BelFone offers advanced base station solutions that ensure high performance, security, and scalability for a variety of industries. What is a Radio Base Station?

A radio base station is a critical part of any wireless.

The SATCOM Base Station is designed for global, in-theater and on-the-move operations. This Base Station provides secure Over-the-Horizon (OTH) data communications with HOOK2 PRC-112G® and HOOK3 radios. This system is a powerful, global, cost-effective solution that provides assured communications.

A base transceiver station (BTS) or a baseband unit[1] (BBU) is a piece of equipment that facilitates wireless communication between user equipment (UE) and a network. UEs are devices like mobile phones (handsets), WLL phones, computers with wireless Internet connectivity, or antennas mounted on.

The Virtual Library houses over 235,000 criminal justice resources, including all known OJP works. This guide presents background information to help law enforcement agencies analyze their base station equipment needs and select



superior equipment to provide reliable communication between the.

A typical communication base station combines a cabinet and a pole. The cabinet houses critical components like main base station equipment, transmission equipment, power supply systems, and battery banks. Meanwhile, the pole serves as a mounting point for antennas, Remote Radio Units (RRUs), and.



Base station communication room equipment



Complete Guide to 5G Base Station Construction , Key Steps, Equipment

At the heart of mobile communication networks lies the main base station equipment. Central to this setup are three critical components-- BBU (Baseband Unit), RRU ...

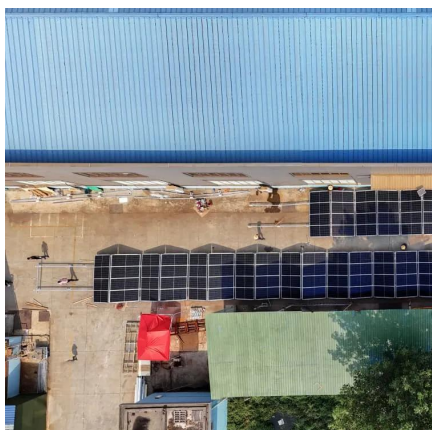
[Request Quote](#)



Base transceiver station

A base transceiver station (BTS) or a baseband unit[1] (BBU) is a piece of equipment that facilitates wireless communication between user equipment (UE) and a network.

[Request Quote](#)



2-Way Radio Base Stations -- Silke Communications

The company manufactures communications equipment of unsurpassed reliability and value for use by public safety professionals and government agencies, as well as radios for use in a ...

[Request Quote](#)

Base transceiver station

A base transceiver station (BTS) or a baseband unit (BBU) is a piece of equipment that facilitates wireless communication between user equipment (UE) and a network. UEs are devices like mobile phones (handsets), WLL phones, computers with wireless Internet connectivity, or antennas mounted on buildings or telecommunication



towers. The network can be that of any of the wireless communication technologies like GSM, CDMA, wireless local loop, Wi-Fi, WiMAX or other

[Request Quote](#)



[APX Transportable Base Station Specification Sheet](#)

It can be deployed as a temporary Station is compatible with the APX 7500, 6500, and base station for law enforcement, military deployment, 4500 mobiles, it only requires a few ...

[Request Quote](#)



Base Stations

The present-day tele-space is incomplete without the base stations as these constitute an important part of the modern-day scheme ...

[Request Quote](#)



SATCOM Base Station

CSAR missions can be done faster using the SATCOM Base Station. You can securely talk Over-the-Horizon (OTH) with the HOOK2 PRC-112G® ...

[Request Quote](#)

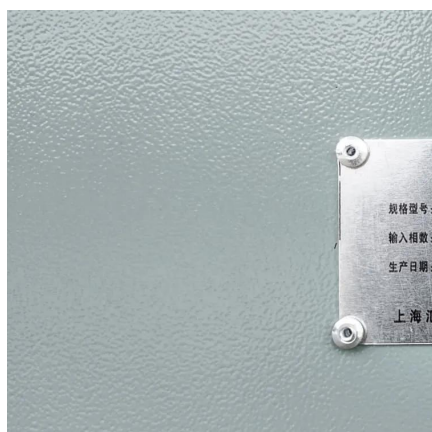


SATCOM Base Station



CSAR missions can be done faster using the SATCOM Base Station. You can securely talk Over-the-Horizon (OTH) with the HOOK2 PRC-112G® and HOOK3 radios, and quickly extract the ...

[Request Quote](#)



[2-Way Radio Base Stations -- Silke Communications](#)

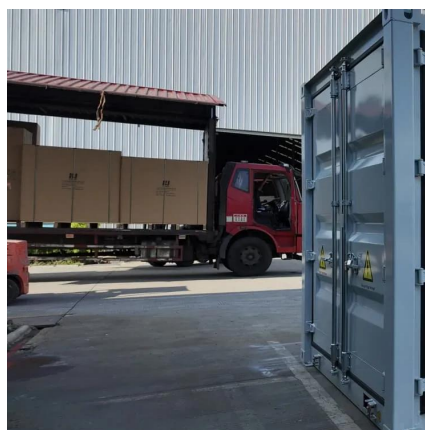
The company manufactures communications equipment of unsurpassed reliability and value for use by public safety professionals and government ...

[Request Quote](#)

Base Stations

The present-day tele-space is incomplete without the base stations as these constitute an important part of the modern-day scheme of wireless communications. They are ...

[Request Quote](#)



[new, used, and refurbished telecom infrastructure equipment](#)

Dama Telecom is a global supplier of new, used, and refurbished telecom infrastructure equipment - Wireless Base Stations, Optical Transport, Network Routers, Switch Equipment, ...

[Request Quote](#)



[Choosing the Right Base Station for](#)



[Critical Communications](#)

In the world of critical communications, selecting the right base station is vital to ensure reliable and consistent coverage, regardless of the deployment environment. From ...

[Request Quote](#)



[Radio Base Stations for Secure Communication](#)

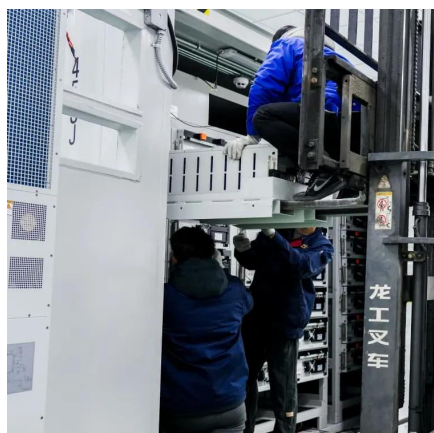
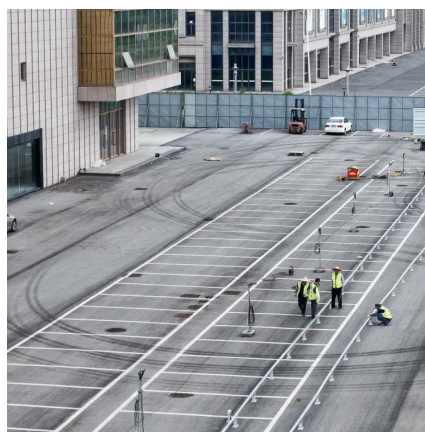
Discover Belfone's advanced radio base stations designed for reliable, scalable, and secure communication. Perfect for public safety, industrial, and enterprise use, Belfone's solutions ...

[Request Quote](#)

[Complete Guide to 5G Base Station Construction](#)

At the heart of mobile communication networks lies the main base station equipment. Central to this setup are three critical ...

[Request Quote](#)



Guide to Base Station Communications Equipment , Office of ...

The guide then describes basic equipment needed in a base station: a transceiver (transmitter and receiver), a control device, microphone and speaker, a transmission line, and an antenna.

[Request Quote](#)



Contact Us

For catalog requests, pricing, or partnerships, please visit:

<https://www.energyinnovationday.pl>

Phone: +48 22 335 1273

Email: info@energyinnovationday.pl

Scan the QR code to contact us via WhatsApp.

